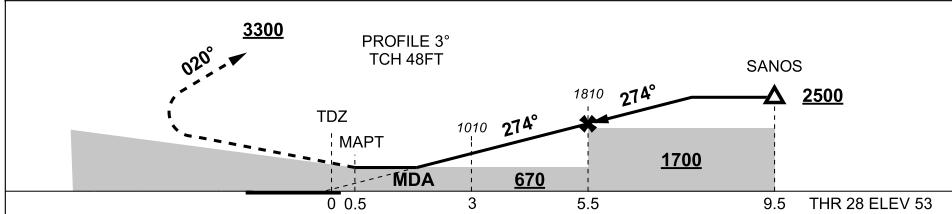
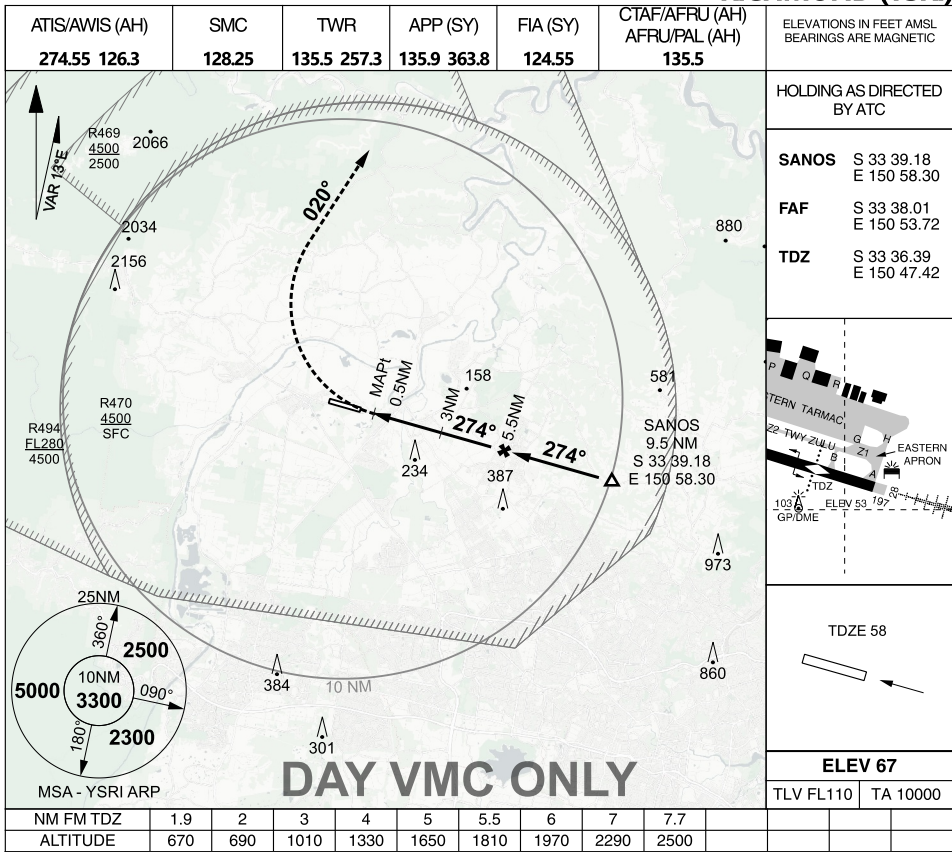


MILITARY USE ONLY

S33 36.04 E150 46.84  
PANS-OPS, WGS 84, AATCP-1

ARA RWY 28  
RICHMOND (YSRI)



MISSED APPROACH: TURN RIGHT, TRACK 020°. CLIMB TO 3300FT or AS DIRECTED BY ATC.													
CATEGORY	C				D				E				
ARA	670	617	-2600	(VIS -2000 WITH ACTUAL QNH)									NOT AUTHORISED
CIRCLING	1090	1023	-4000	1090 1023 -5000									

NOTES: 1. INITIAL TOLERANCES NOT CONTAINED WITHIN CTR/CTAF.  
2. DRG INITIAL APCH THERE IS A POSS OF CONFLCTION WITH ACFT OPR ON FIA FREQ CLOSE TO CTR/CTAF BDY.  
3. TDZ ON RWY C/L 279 M PAST LDG THR.

CHANGES: NEW CHART

09 JUL 26

AIS-AF  
MILITARY USE ONLY

RICHMOND (YSRI)  
ARA RWY 28