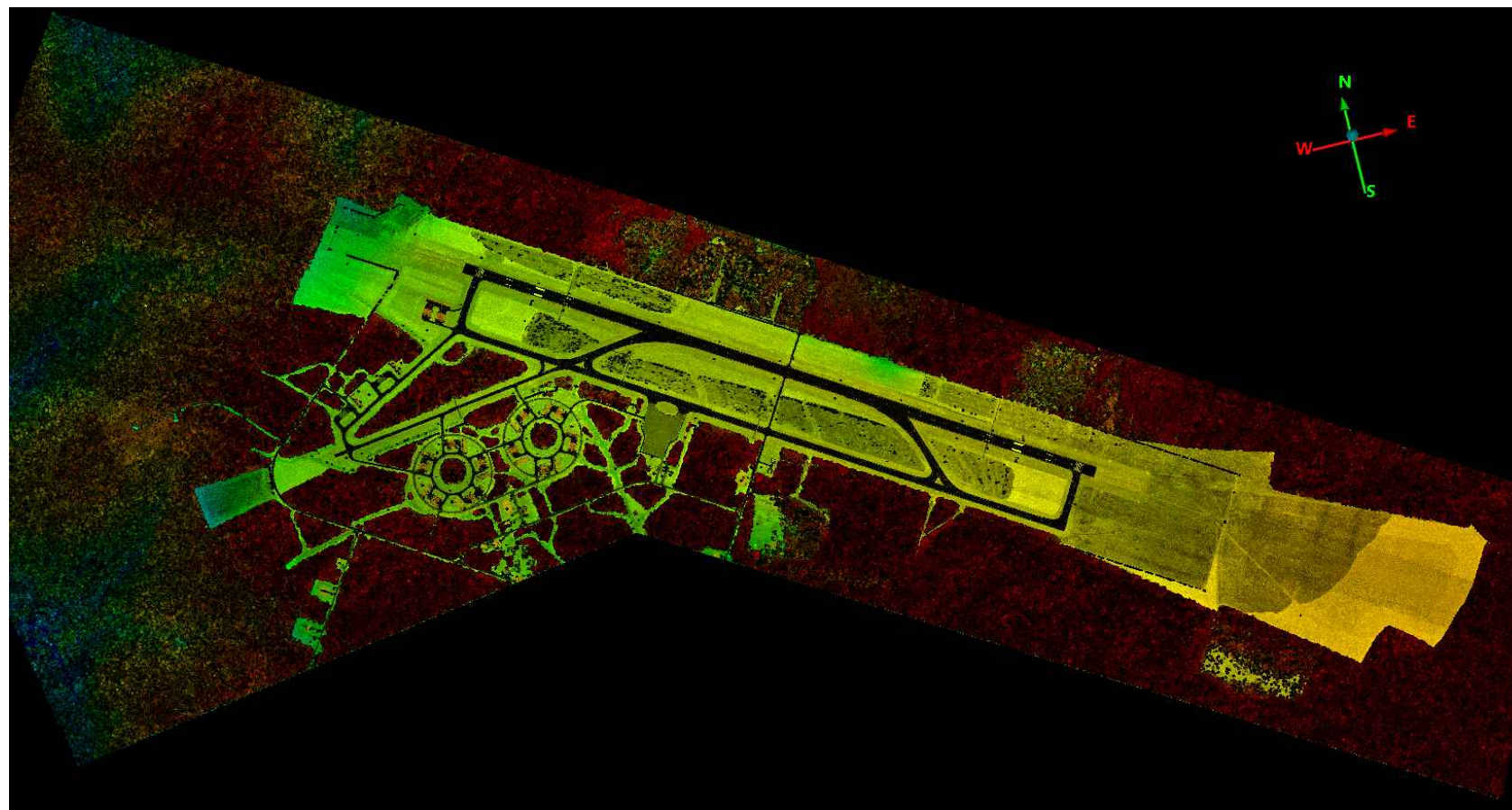



OBSTACLE LIMITATION SURVEYS AND ASSESSMENT

RAAF BASE SCHERGER
 AERODROME OBSTACLE CHART ICAO TYPE A
 (OPERATING LIMITATIONS) ISSUED NOVEMBER 2024



REV	DATE	REVISION DETAILS	APPROVED	SCALE	SIZE	FOR ISSUE	PROJECT
A	11.06.24	FOR REVIEW	DG	AS SHOWN	A1/A3	NOT FOR CONSTRUCTION	OBSTACLE LIMITATION SURVEYS AND ASSESSMENT RAAF BASE SCHERGER
B	09.07.24	FOR ISSUE	DG				
C	15.11.24	FOR ISSUE - UPDATE RWS WIDTH	DG				
D	25.11.24	FOR ISSUE - UPDATE REPSM COORDS	DG				

DRAWN	APPROVED	DATE	TITLE
MH		25/11/2024	AERODROME OBSTACLE CHART ICAO TYPE A (OPERATING LIMITATIONS) ISSUED NOVEMBER 2024 COVER SHEET
SURVEYED KI/MH/AAM			
CHECKED GH	DANIEL GEEVES		

DRAWING No.	PROJECT No.	WBS	TYPE	DISC	SITE	NUMBER	REV
520002	EST09759	DRG	UU	SGR	001	D	

DECLARED DISTANCES FOR RUNWAY 12	
TAKE OFF RUN AVAILABLE (TORA)	3049m (10003')
TAKE OFF DISTANCE AVAILABLE (TODA)	3109m (10200') 2.13%
ACCELERATE STOP DISTANCE AVAILABLE (ASDA)	3049m (10003')
LANDING DISTANCE AVAILABLE (LDA)	3049m (10003')
SUPPLEMENTARY TAKE OFF DISTANCE AVAILABLE (STODA)	2659m (8723') 1.6%, 2976m (9763') 1.9%, 3039m (9970') 2.0%

LEGEND	
	LOWEST SURVEYED SLOPE
	GROUND LEVEL
	MOST LIMITING OBSTACLE
	OBSTACLE

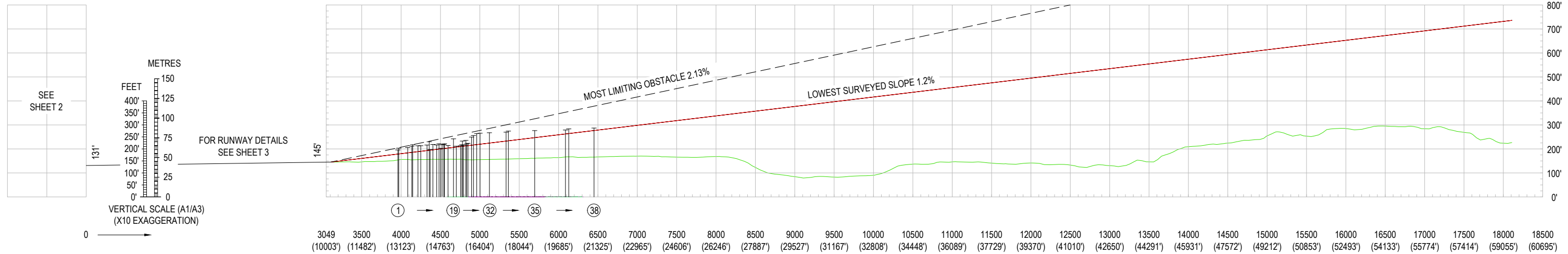
NOTES

- AZIMUTH AND COORDINATES FOR THIS SURVEY ARE BASED ON MGA (GDA2020) ZONE 54 THE VERTICAL DATUM BEING AHD.
- HORIZONTAL DIMENSIONS IN METRES (FEET) ELEVATIONS IN FEET
- USERS OF THIS CHART SHOULD NOTIFY ANY ERRORS OR OMISSIONS AS SOON AS THEY BECOME APPARENT TO :-

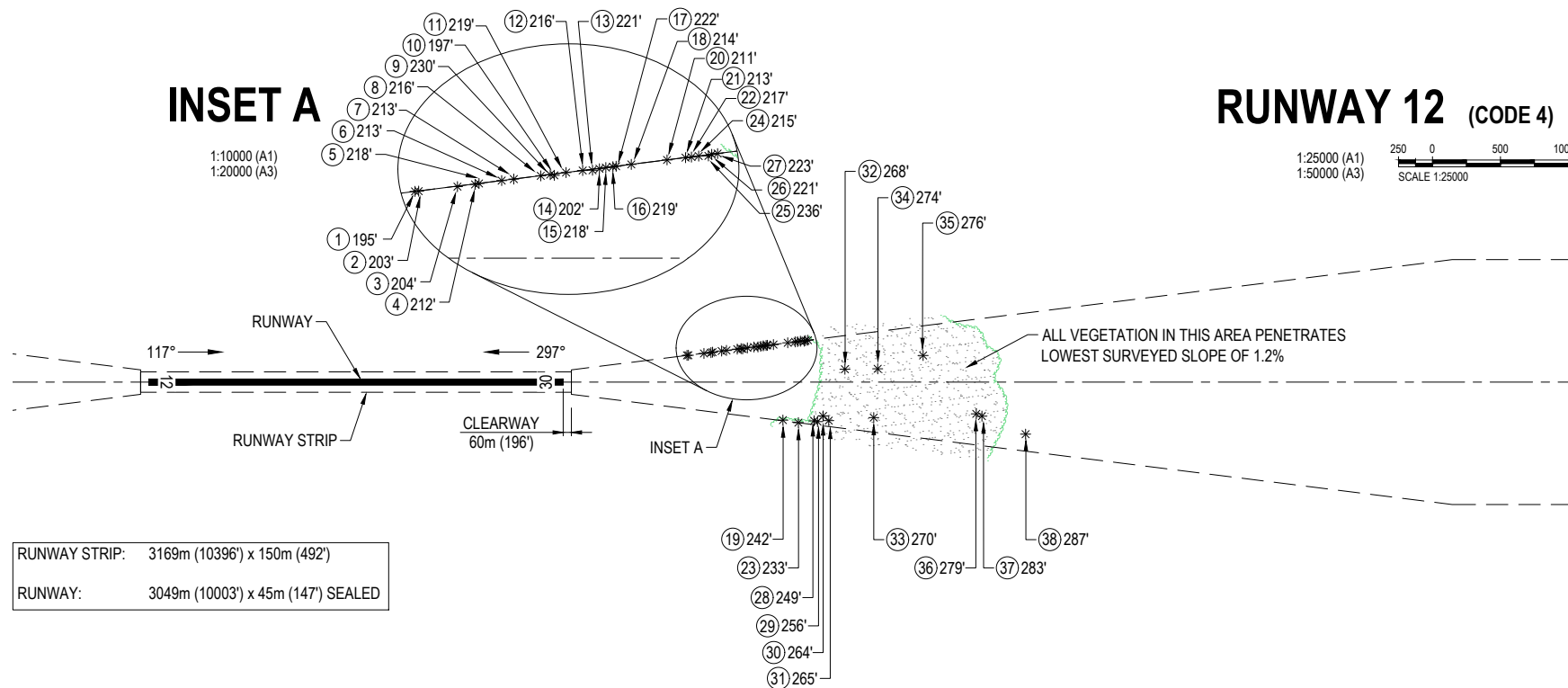
AERONAUTICAL INFORMATION SERVICE - AIR FORCE
EMAIL: AIS.AF@DEFENCE.GOV.AU
- FOR FURTHER INFORMATION REGARDING THIS CHART CONTACT THE ABOVE
- MAGNETIC VARIATION 04° 54' E (MAY 2024)
- AERIAL SURVEY COMPLETED SEPTEMBER 2023.
GROUND SURVEY CHECKS AND VERIFICATION OCTOBER 2023.

LEGEND

OBSTRUCTIONS AND OBSTACLES	
	OBJECT NUMBER
392	TOP ELEVATION IN FEET
	TREE(S) OR VEGETATION
	BUILDING OR LARGE STRUCTURE
	POLE, TOWER, SPIRE ETC
	ANTENNA
	MOVING (ROADS, RAILWAY TRACKS ETC)
	TERRAIN PENETRATING LOWEST SURVEYED SLOPE
	OVERHEAD TRANSMISSION LINE
	FENCE LINE
	DENSE FOREST PENETRATING LOWEST SURVEYED SLOPE



INSET A



RUNWAY STRIP: 3169m (10396') x 150m (492')
 RUNWAY: 3049m (10003') x 45m (147') SEALED

THE TYPE A SURVEY HAS BEEN CONDUCTED IN ACCORDANCE WITH ICAO ANNEX 4 AND DEPARTMENT OF DEFENCE REQUIREMENTS. THE CHART CLEARLY SHOWS THE GRAPHICAL RESULTS OF THE SURVEY AND HAS BEEN CHECKED FOR ACCURACY AND COMPLETENESS OF INFORMATION. THE CHART IS CERTIFIED CORRECT FOR PUBLICATION.

[Signature]
 DANIEL GEEVES
 REGISTERED SURVEYOR
 aurecon
 DATE 25/11/2024



REV	DATE	REVISION DETAILS	APPROVED
A	11.06.24	FOR REVIEW	DG
B	09.07.24	FOR ISSUE	DG
C	15.11.24	FOR ISSUE - UPDATE RWS WIDTH	DG
D	25.11.24	FOR ISSUE - UPDATE REPSM COORDS	DG

SCALE	SIZE	FOR ISSUE
AS SHOWN	A1/A3	NOT FOR CONSTRUCTION
DRAWN	MH	APPROVED
SURVEYED	KI/MH/AAM	DATE 25/11/2024
CHECKED	GH	DANIEL GEEVES

PROJECT	TITLE	DRAWING No.	PROJECT No.	WBS	TYPE	DISC	SITE	NUMBER	REV
OBSTACLE LIMITATION SURVEYS AND ASSESSMENT RAAF BASE SCHERGER	AERODROME OBSTACLE CHART ICAO TYPE A (OPERATING LIMITATIONS) ISSUED NOVEMBER 2024 RUNWAY 12 - SHEET 1 OF 10	520002	EST09759	DRG	UU	SGR	002	D	

DECLARED DISTANCES FOR RUNWAY 30	
TAKE OFF RUN AVAILABLE (TORA)	3049m (10003')
TAKE OFF DISTANCE AVAILABLE (TODA)	3109m (10200') 2.29%
ACCELERATE STOP DISTANCE AVAILABLE (ASDA)	3049m (10003')
LANDING DISTANCE AVAILABLE (LDA)	3049m (10003')
SUPPLEMENTARY TAKE OFF DISTANCE AVAILABLE (STODA)	2753m (9032') 1.6%, 2971m (9747') 1.9%, 3030m (9940') 2.0%, 3088m (10131') 2.2%

LEGEND	
	LOWEST SURVEYED SLOPE
	GROUND LEVEL
	MOST LIMITING OBSTACLE
	OBSTACLE

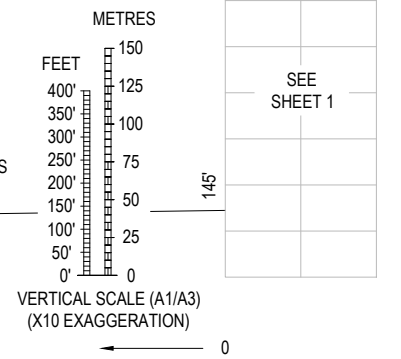
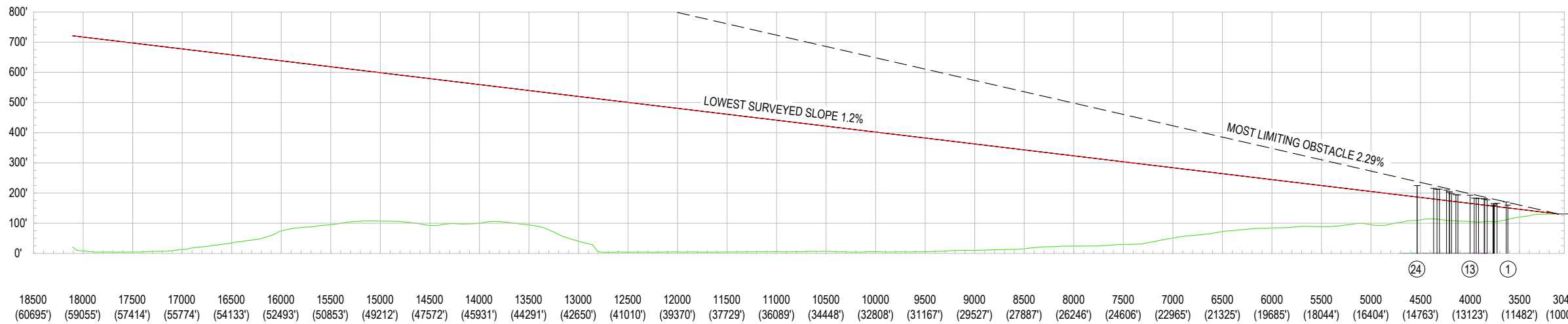
NOTES

- AZIMUTH AND COORDINATES FOR THIS SURVEY ARE BASED ON MGA (GDA2020) ZONE 54 THE VERTICAL DATUM BEING AHD.
- HORIZONTAL DIMENSIONS IN METRES (FEET) ELEVATIONS IN FEET
- USERS OF THIS CHART SHOULD NOTIFY ANY ERRORS OR OMISSIONS AS SOON AS THEY BECOME APPARENT TO :-

AERONAUTICAL INFORMATION SERVICE - AIR FORCE
EMAIL: AIS.AF@DEFENCE.GOV.AU
- FOR FURTHER INFORMATION REGARDING THIS CHART CONTACT THE ABOVE
- MAGNETIC VARIATION 04° 54' E (MAY 2024)
- AERIAL SURVEY COMPLETED SEPTEMBER 2023.
GROUND SURVEY CHECKS AND VERIFICATION OCTOBER 2023.

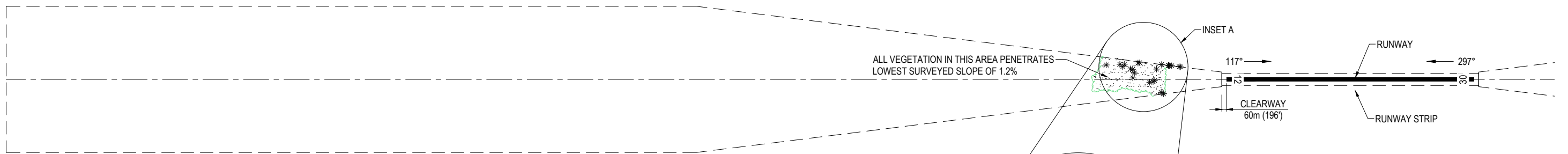
LEGEND

OBSTRUCTIONS AND OBSTACLES	
	OBJECT NUMBER
392	TOP ELEVATION IN FEET
	TREE(S) OR VEGETATION
	BUILDING OR LARGE STRUCTURE
	POLE, TOWER, SPIRE ETC
	ANTENNA
	MOVING (ROADS, RAILWAY TRACKS ETC)
	TERRAIN PENETRATING LOWEST SURVEYED SLOPE
	OVERHEAD TRANSMISSION LINE
	FENCE LINE
	DENSE FOREST PENETRATING LOWEST SURVEYED SLOPE



RUNWAY 30 (CODE 4)

1:25000 (A1)
1:50000 (A3)
SCALE 1:25000

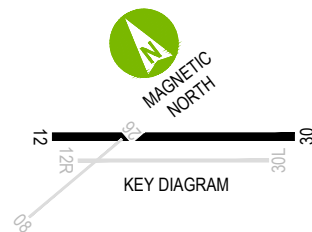


RUNWAY STRIP: 3169m (10396') x 150m (492')
RUNWAY: 3049m (10003') x 45m (147') SEALED

THE TYPE A SURVEY HAS BEEN CONDUCTED IN ACCORDANCE WITH ICAO ANNEX 4 AND DEPARTMENT OF DEFENCE REQUIREMENTS. THE CHART CLEARLY SHOWS THE GRAPHICAL RESULTS OF THE SURVEY AND HAS BEEN CHECKED FOR ACCURACY AND COMPLETENESS OF INFORMATION. THE CHART IS CERTIFIED CORRECT FOR PUBLICATION.

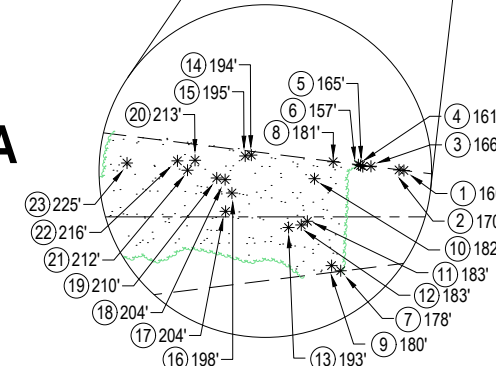
Daniel Geeves
DANIEL GEEVES
REGISTERED SURVEYOR
aurecon

25/11/2024
DATE



INSET A

1:12500 (A1)
1:25000 (A3)



www.aurecongroup.com



REV	DATE	REVISION DETAILS	APPROVED	SCALE	SIZE	FOR ISSUE	PROJECT
A	11.06.24	FOR REVIEW	DG	AS SHOWN	A1/A3	NOT FOR CONSTRUCTION	OBSTACLE LIMITATION SURVEYS AND ASSESSMENT RAAF BASE SCHERGER
B	09.07.24	FOR ISSUE	DG				
C	15.11.24	FOR ISSUE - UPDATE RWS WIDTH	DG				
D	25.11.24	FOR ISSUE - UPDATE REPSM COORDS	DG				

DRAWN	APPROVED	DATE	TITLE
MH	<i>Daniel Geeves</i>	25/11/2024	AERODROME OBSTACLE CHART ICAO TYPE A (OPERATING LIMITATIONS) ISSUED NOVEMBER 2024 RUNWAY 30 - SHEET 2 OF 10

DRAWING No.	PROJECT No.	WBS	TYPE	DISC	SITE	NUMBER	REV
520002	EST09759	DRG	UU	SGR	003	D	

DECLARED DISTANCES FOR EMERGENCY RUNWAY 30L (TWY A)	
TAKE OFF RUN AVAILABLE (TORA)	2399m (7871')
TAKE OFF DISTANCE AVAILABLE (TODA)	2459m (8068') 8.90%
ACCELERATE STOP DISTANCE AVAILABLE (ASDA)	2399m (7871')
LANDING DISTANCE AVAILABLE (LDA)	2399m (7871')
SUPPLEMENTARY TAKE OFF DISTANCE AVAILABLE (STODA)	1474m (4835') 1.6%, 1708m (5603') 1.9%, 1772m (5813') 2.0%, 1883m (6177') 2.2%, 2017m (6617') 2.5%, 2262m (7421') 3.3%, 2399m (7870') 5.0%

- LEGEND**
- LOWEST SURVEYED SLOPE
 - GROUND LEVEL
 - - - MOST LIMITING OBSTACLE
 - ⊥ OBSTACLE
 - ①

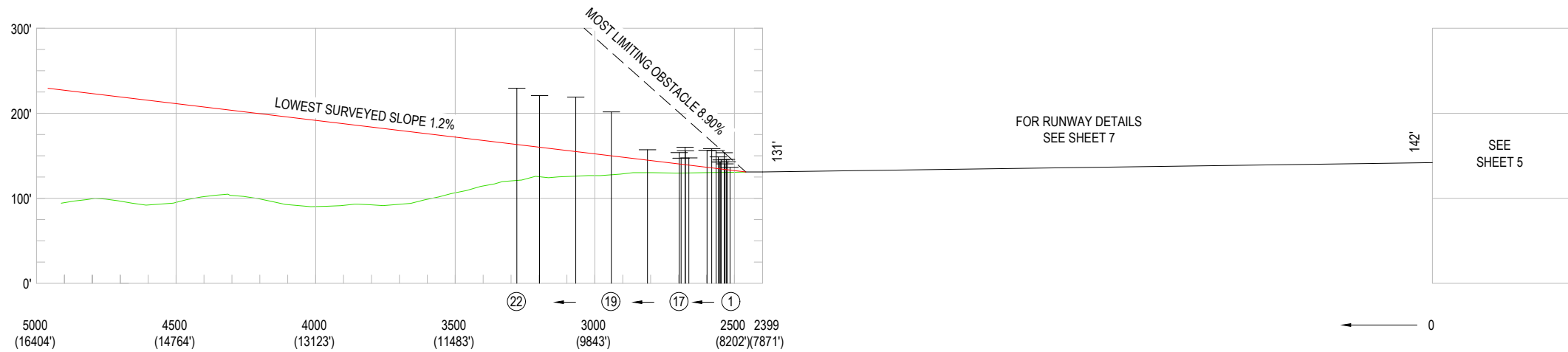
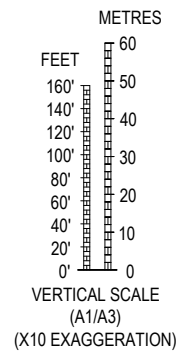
NOTES

- AZIMUTH AND COORDINATES FOR THIS SURVEY ARE BASED ON MGA (GDA2020) ZONE 54 THE VERTICAL DATUM BEING AHD.
- HORIZONTAL DIMENSIONS IN METRES (FEET) ELEVATIONS IN FEET
- USERS OF THIS CHART SHOULD NOTIFY ANY ERRORS OR OMISSIONS AS SOON AS THEY BECOME APPARENT TO :-

AERONAUTICAL INFORMATION SERVICE - AIR FORCE
EMAIL: AIS.AF@DEFENCE.GOV.AU
- FOR FURTHER INFORMATION REGARDING THIS CHART CONTACT THE ABOVE
- MAGNETIC VARIATION 04° 54' E (MAY 2024)
- AERIAL SURVEY COMPLETED SEPTEMBER 2023.
GROUND SURVEY CHECKS AND VERIFICATION OCTOBER 2023.

LEGEND

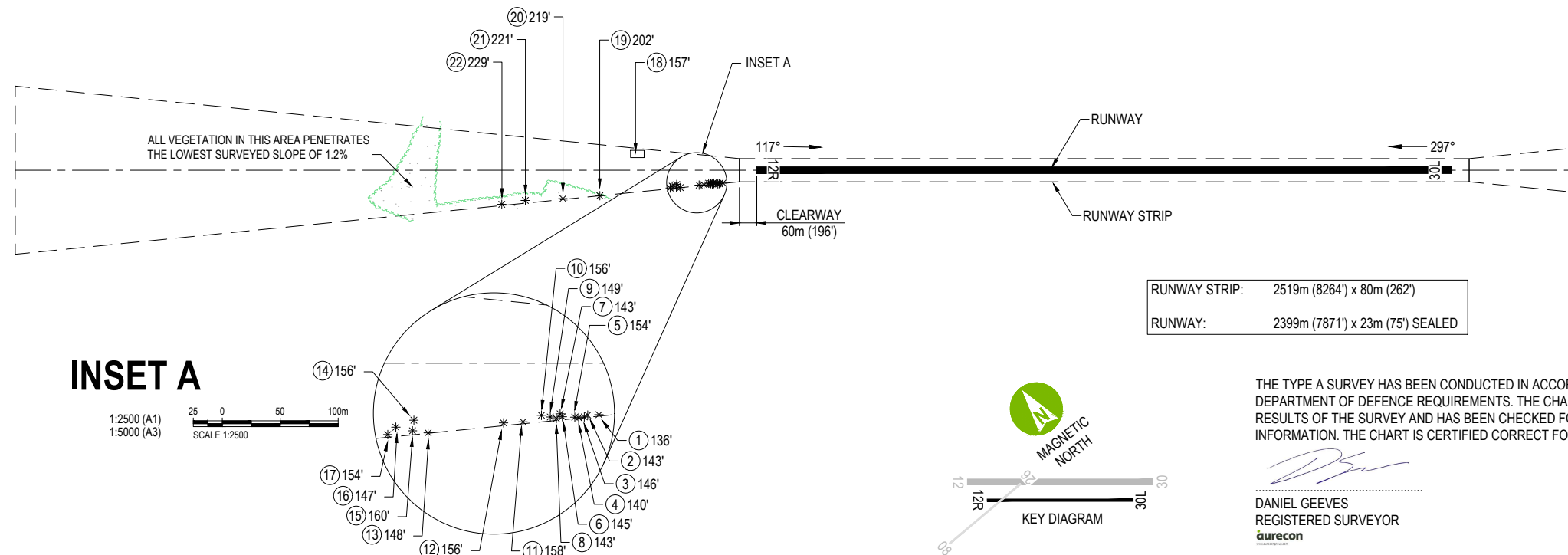
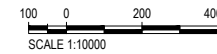
- OBSTRUCTIONS AND OBSTACLES**
- ① OBJECT NUMBER
 - 392' TOP ELEVATION IN FEET
 - * TREE(S) OR VEGETATION
 - BUILDING OR LARGE STRUCTURE
 - POLE, TOWER, SPIRE ETC
 - △ ANTENNA
 - MOVING (ROADS, RAILWAY TRACKS ETC)
 - TERRAIN PENETRATING LOWEST SURVEYED SLOPE
 - OVERHEAD TRANSMISSION LINE
 - FENCE LINE
 - DENSE FOREST PENETRATING LOWEST SURVEYED SLOPE



EMERGENCY RUNWAY 30L

TWY A (CODE 2)

1:10000 (A1)
1:20000 (A3)



RUNWAY STRIP: 2519m (8264') x 80m (262')
RUNWAY: 2399m (7871') x 23m (75') SEALED

THE TYPE A SURVEY HAS BEEN CONDUCTED IN ACCORDANCE WITH ICAO ANNEX 4 AND DEPARTMENT OF DEFENCE REQUIREMENTS. THE CHART CLEARLY SHOWS THE GRAPHICAL RESULTS OF THE SURVEY AND HAS BEEN CHECKED FOR ACCURACY AND COMPLETENESS OF INFORMATION. THE CHART IS CERTIFIED CORRECT FOR PUBLICATION.

[Signature]
DANIEL GEEVES
REGISTERED SURVEYOR
aurecon

25/11/2024
DATE

EMERGENCY RUNWAY 30L (TWY A) SURVEY HAS BEEN ASSESSED BASED ON THE FOLLOWING "CODE 2" TAKE-OFF PARAMETERS:
LENGTH OF INNER EDGE - 80m
RATE OF DIVERGENCE (EACH SIDE) - 10%
FINAL WIDTH - 580m
OVERALL LENGTH - 2500m



www.aurecongroup.com



REV	DATE	REVISION DETAILS	APPROVED
A	11.06.24	FOR REVIEW	DG
B	09.07.24	FOR ISSUE	DG
C	15.11.24	FOR ISSUE - UPDATE RWS WIDTH	DG
D	25.11.24	FOR ISSUE - UPDATE REPSM COORDS	DG

SCALE	SIZE
AS SHOWN	A1/A3
DRAWN	
MH	
SURVEYED	
KI/MH/AAM	
CHECKED	
GH	

FOR ISSUE	NOT FOR CONSTRUCTION
APPROVED	
<i>[Signature]</i>	
DANIEL GEEVES	
DATE	25/11/2024

PROJECT	TITLE	DRAWING No.	PROJECT No.	WBS	TYPE	DISC	SITE	NUMBER	REV
OBSTACLE LIMITATION SURVEYS AND ASSESSMENT RAAF BASE SCHERGER	AERODROME OBSTACLE CHART ICAO TYPE A (OPERATING LIMITATIONS) ISSUED NOVEMBER 2024 EMERGENCY RUNWAY 30L (TWY A) - SHEET 6 OF 10	520002	EST09759	DRG	UU	SGR	007	D	

DECLARED DISTANCES FOR EMERGENCY RUNWAY 08 (TWY C)	
TAKE OFF RUN AVAILABLE (TORA)	1524m (5000')
TAKE OFF DISTANCE AVAILABLE (TODA)	1584m (5197') 3.51%
ACCELERATE STOP DISTANCE AVAILABLE (ASDA)	1524m (5000')
LANDING DISTANCE AVAILABLE (LDA)	1524m (5000')
SUPPLEMENTARY TAKE OFF DISTANCE AVAILABLE (STODA)	1016m (3333') 1.6%, 1215m (3986') 1.9%, 1258m (4127') 2.0%, 1326m (4350') 2.2%, 1406m (4612') 2.5%, 1552m (5091') 3.3%

LEGEND	
	LOWEST SURVEYED SLOPE
	GROUND LEVEL
	MOST LIMITING OBSTACLE
	OBSTACLE

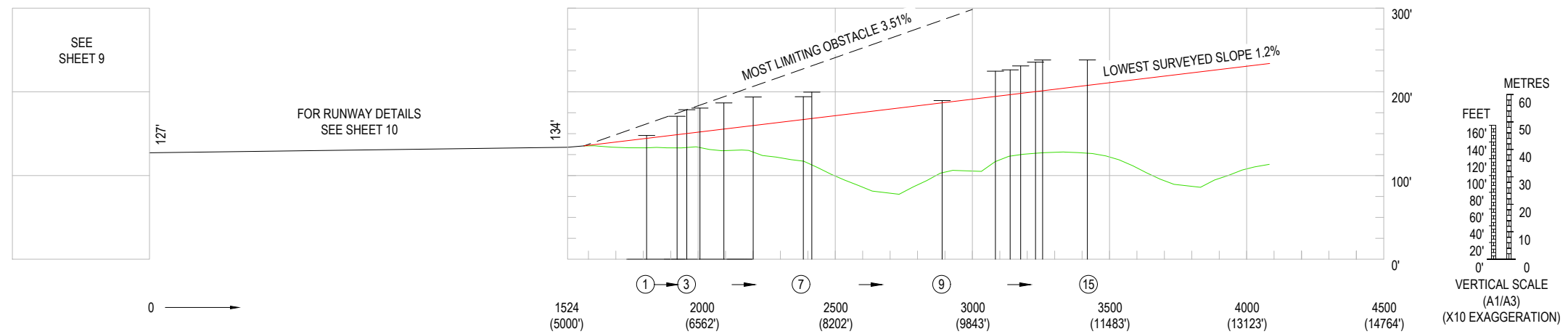
NOTES

- AZIMUTH AND COORDINATES FOR THIS SURVEY ARE BASED ON MGA (GDA2020) ZONE 54 THE VERTICAL DATUM BEING AHD.
- HORIZONTAL DIMENSIONS IN METRES (FEET) ELEVATIONS IN FEET
- USERS OF THIS CHART SHOULD NOTIFY ANY ERRORS OR OMISSIONS AS SOON AS THEY BECOME APPARENT TO :-

AERONAUTICAL INFORMATION SERVICE - AIR FORCE
EMAIL: AIS.AF@DEFENCE.GOV.AU
- FOR FURTHER INFORMATION REGARDING THIS CHART CONTACT THE ABOVE
- MAGNETIC VARIATION 04° 54' E (MAY 2024)
- AERIAL SURVEY COMPLETED SEPTEMBER 2023.
GROUND SURVEY CHECKS AND VERIFICATION OCTOBER 2023.

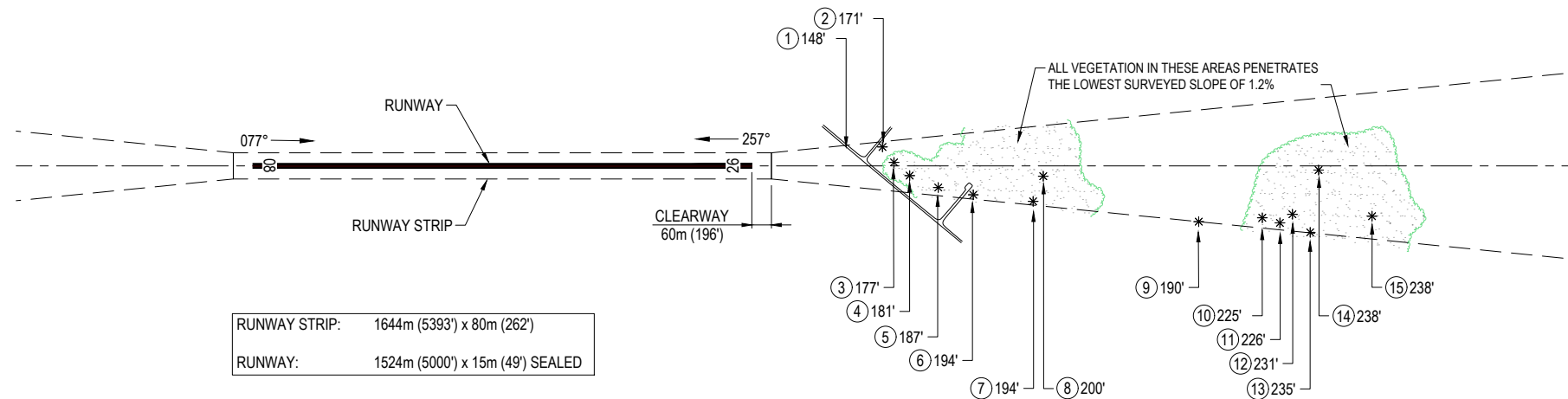
LEGEND

OBSTRUCTIONS AND OBSTACLES	
	OBJECT NUMBER
	TOP ELEVATION IN FEET
	TREE(S) OR VEGETATION
	BUILDING OR LARGE STRUCTURE
	POLE, TOWER, SPIRE ETC
	ANTENNA
	MOVING (ROADS, RAILWAY TRACKS ETC)
	TERRAIN PENETRATING LOWEST SURVEYED SLOPE
	OVERHEAD TRANSMISSION LINE
	FENCE LINE
	DENSE FOREST PENETRATING LOWEST SURVEYED SLOPE



EMERGENCY RUNWAY 08

TWY C (CODE 2)
1:10000 (A1)
1:20000 (A3)



RUNWAY STRIP:	1644m (5393') x 80m (262')
RUNWAY:	1524m (5000') x 15m (49') SEALED

EMERGENCY RUNWAY 08 (TWY C) SURVEY HAS BEEN ASSESSED BASED ON THE FOLLOWING "CODE 2" TAKE-OFF PARAMETERS:
LENGTH OF INNER EDGE - 80m
RATE OF DIVERGENCE (EACH SIDE) - 10%
FINAL WIDTH - 580m
OVERALL LENGTH - 2500m

THE TYPE A SURVEY HAS BEEN CONDUCTED IN ACCORDANCE WITH ICAO ANNEX 4 AND DEPARTMENT OF DEFENCE REQUIREMENTS. THE CHART CLEARLY SHOWS THE GRAPHICAL RESULTS OF THE SURVEY AND HAS BEEN CHECKED FOR ACCURACY AND COMPLETENESS OF INFORMATION. THE CHART IS CERTIFIED CORRECT FOR PUBLICATION.

DANIEL GEEVES
REGISTERED SURVEYOR
aurecon

25/11/2024
DATE



www.aurecongroup.com



REV	DATE	REVISION DETAILS	APPROVED	SCALE	SIZE	FOR ISSUE	PROJECT
A	11.06.24	FOR REVIEW	DG	AS SHOWN	A1/A3	NOT FOR CONSTRUCTION	OBSTACLE LIMITATION SURVEYS AND ASSESSMENT RAAF BASE SCHERGER
B	09.07.24	FOR ISSUE	DG				
C	15.11.24	FOR ISSUE - UPDATE RWS WIDTH	DG				
D	25.11.24	FOR ISSUE - UPDATE REPSM COORDS	DG				

SCALE	SIZE	FOR ISSUE	PROJECT
AS SHOWN	A1/A3	NOT FOR CONSTRUCTION	OBSTACLE LIMITATION SURVEYS AND ASSESSMENT RAAF BASE SCHERGER

DRAWN	APPROVED	DATE	TITLE
MH		25/11/2024	AERODROME OBSTACLE CHART ICAO TYPE A (OPERATING LIMITATIONS) ISSUED NOVEMBER 2024 EMERGENCY RUNWAY 08 (TWY C) - SHEET 8 OF 10

CHECKED	DATE	PROJECT No.	WBS	TYPE	DISC	SITE	NUMBER	REV
GH		520002	EST09759	DRG	UU	SGR	009	D

DECLARED DISTANCES FOR EMERGENCY RUNWAY 26 (TWY C)	
TAKE OFF RUN AVAILABLE (TORA)	1524m (5000')
TAKE OFF DISTANCE AVAILABLE (TODA)	1584m (5197') 2.82%
ACCELERATE STOP DISTANCE AVAILABLE (ASDA)	1524m (5000')
LANDING DISTANCE AVAILABLE (LDA)	1524m (5000')
SUPPLEMENTARY TAKE OFF DISTANCE AVAILABLE (STODA)	1104m (3622') 1.6%, 1273m (4176') 1.9%, 1319m (4327') 2.0%, 1400m (4593') 2.2%, 1498m (4914') 2.5%

NOTES

- AZIMUTH AND COORDINATES FOR THIS SURVEY ARE BASED ON MGA (GDA2020) ZONE 54 THE VERTICAL DATUM BEING AHD.
- HORIZONTAL DIMENSIONS IN METRES (FEET) ELEVATIONS IN FEET
- USERS OF THIS CHART SHOULD NOTIFY ANY ERRORS OR OMISSIONS AS SOON AS THEY BECOME APPARENT TO :-

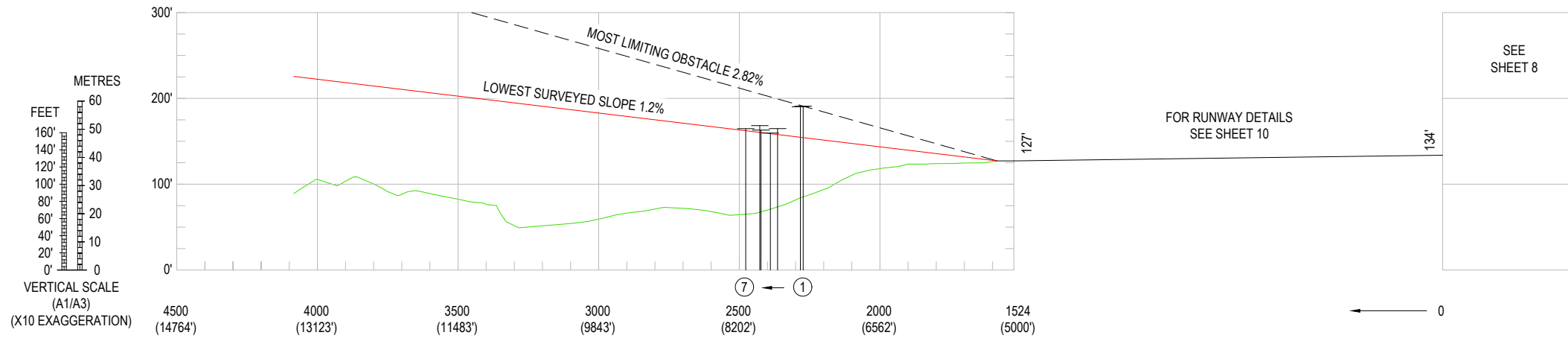
AERONAUTICAL INFORMATION SERVICE - AIR FORCE
EMAIL: AIS.AF@DEFENCE.GOV.AU
- FOR FURTHER INFORMATION REGARDING THIS CHART CONTACT THE ABOVE
- MAGNETIC VARIATION 04° 54' E (MAY 2024)
- AERIAL SURVEY COMPLETED SEPTEMBER 2023.
GROUND SURVEY CHECKS AND VERIFICATION OCTOBER 2023.

LEGEND

- OBSTRUCTIONS AND OBSTACLES**
- ① OBJECT NUMBER
 - 392 TOP ELEVATION IN FEET
 - * TREE(S) OR VEGETATION
 - BUILDING OR LARGE STRUCTURE
 - POLE, TOWER, SPIRE ETC
 - △ ANTENNA
 - MOVING (ROADS, RAILWAY TRACKS ETC)
 - TERRAIN PENETRATING LOWEST SURVEYED SLOPE
 - OVERHEAD TRANSMISSION LINE
 - FENCE LINE
 - DENSE FOREST PENETRATING LOWEST SURVEYED SLOPE

LEGEND

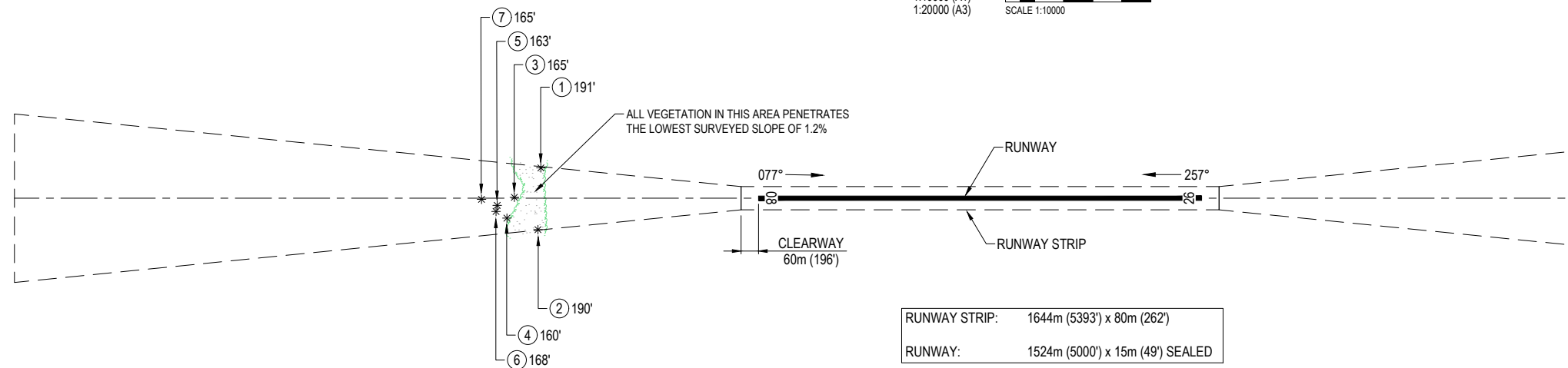
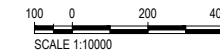
- LOWEST SURVEYED SLOPE
- GROUND LEVEL
- - - MOST LIMITING OBSTACLE
- ① OBSTACLE



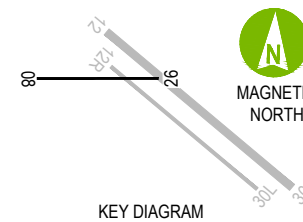
EMERGENCY RUNWAY 26

TWY C (CODE 2)

1:10000 (A1)
1:20000 (A3)



RUNWAY STRIP:	1644m (5393') x 80m (262')
RUNWAY:	1524m (5000') x 15m (49') SEALED



THE TYPE A SURVEY HAS BEEN CONDUCTED IN ACCORDANCE WITH ICAO ANNEX 4 AND DEPARTMENT OF DEFENCE REQUIREMENTS. THE CHART CLEARLY SHOWS THE GRAPHICAL RESULTS OF THE SURVEY AND HAS BEEN CHECKED FOR ACCURACY AND COMPLETENESS OF INFORMATION. THE CHART IS CERTIFIED CORRECT FOR PUBLICATION.

[Signature]
DANIEL GEEVES
REGISTERED SURVEYOR
aurecon

25/11/2024
DATE

EMERGENCY RUNWAY 26 (TWY C) SURVEY HAS BEEN ASSESSED BASED ON THE FOLLOWING "CODE 2" TAKE-OFF PARAMETERS:
LENGTH OF INNER EDGE - 80m
RATE OF DIVERGENCE (EACH SIDE) - 10%
FINAL WIDTH - 580m
OVERALL LENGTH - 2500m



www.aurecongroup.com



REV	DATE	REVISION DETAILS	APPROVED	SCALE	SIZE	FOR ISSUE	PROJECT
A	11.06.24	FOR REVIEW	DG	AS SHOWN	A1/A3	NOT FOR CONSTRUCTION	OBSTACLE LIMITATION SURVEYS AND ASSESSMENT RAAF BASE SCHERGER
B	09.07.24	FOR ISSUE	DG				
C	15.11.24	FOR ISSUE - UPDATE RWS WIDTH	DG	DRAWN		APPROVED	AERODROME OBSTACLE CHART ICAO TYPE A (OPERATING LIMITATIONS) ISSUED NOVEMBER 2024 EMERGENCY RUNWAY 26 (TWY C) - SHEET 9 OF 10
D	25.11.24	FOR ISSUE - UPDATE REPSM COORDS	DG	SURVEYED			
				KI/MH/AAM			
				CHECKED			
				GH		DANIEL GEEVES	

