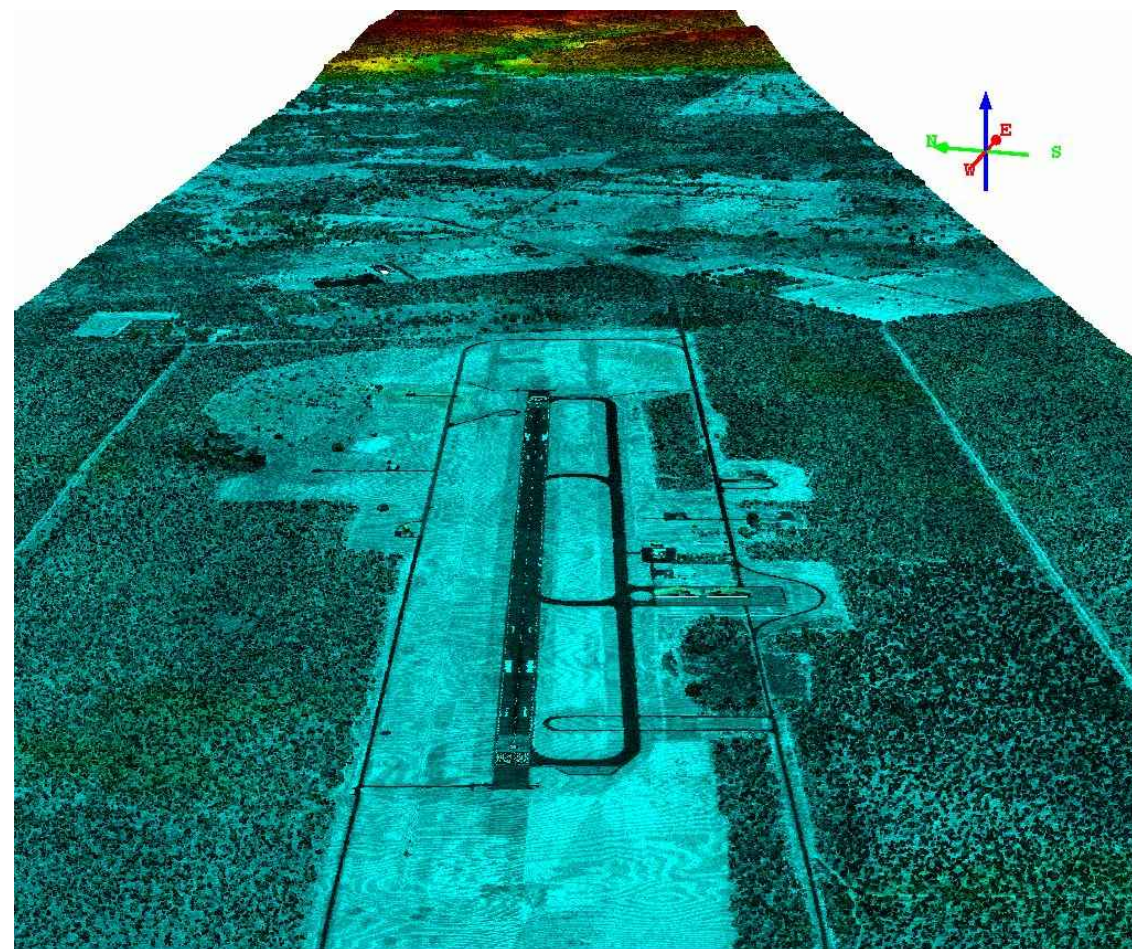


OBSTACLE LIMITATION SURVEYS AND ASSESSMENT

GINGIN AIRFIELD AERODROME OBSTACLE CHART ICAO TYPE A
(OPERATING LIMITATIONS) ISSUED NOVEMBER 2017



| REV | DATE | REVISION DETAILS | APPROVED |
|-----|----------|------------------|----------|
| A | 06.05.16 | DRAFT FOR REVIEW | |
| B | 03.06.16 | FINAL FOR REVIEW | |
| C | 22.11.16 | FINAL FOR REVIEW | |
| D | 05.12.16 | SIGNED FOR ISSUE | GG |
| E | 16.12.16 | SIGNED FOR ISSUE | GG |
| F | 23.11.17 | SIGNED FOR ISSUE | GG |

| SCALE | SIZE |
|----------|-----------------------|
| AS SHOWN | A1/A3 |
| DRAWN | AM |
| SURVEYED | PD / AAM |
| CHECKED | DGG / AIRPORT SURVEYS |

| SIGNED FOR ISSUE | DATE |
|---|----------|
| NOT FOR CONSTRUCTION | 23.11.17 |
|  | |
| GARRY GRAHAM | |

| PROJECT | OBSTACLE LIMITATION SURVEYS AND ASSESSMENT |
|-------------|---|
| TITLE | GINGIN AIRFIELD AERODROME OBSTACLE CHART ICAO TYPE A (OPERATING LIMITATIONS) ISSUED NOVEMBER 2017 COVER SHEET |
| DRAWING No. | PROJECT No. 248842 - WBS D21012 - TYPE DRG - DISC CV - NUMBER 001 - REV F |

LEGEND

- LOWEST SURVEYED SLOPE
- GROUND LEVEL
- - - MOST LIMITING OBSTACLE
- 1 OBSTACLE

DECLARED DISTANCES FOR RUNWAY 26

| | |
|--|--|
| TAKE OFF RUN AVAILABLE (TORA) | 1828m (5997') |
| TAKE OFF DISTANCE AVAILABLE (TODA) | 2133m (6998') |
| ACCELERATE STOP DISTANCE AVAILABLE (ASDA) | 1828m (5997') |
| LANDING DISTANCE AVAILABLE (LDA) | 1828m (5997') |
| SUPPLEMENTARY TAKE OFF DISTANCE AVAILABLE (STODA) -ARRESTOR BARRIER ERECTED -NET POLES 21 FEET ABOVE GROUND LEVEL | 1486m (4875') 1.6%, 1549m (5082') 1.9%, 1566m (5137') 2.0%, 1595m (5232') 2.2%, 1630m (5347') 2.5%, 1690m (5544') 3.3%, 1754m (5754') 5.0% |
| SUPPLEMENTARY TAKE OFF DISTANCE AVAILABLE (STODA) -ARRESTOR BARRIER RETRACTED -NET POLES 5 FEET ABOVE GROUND LEVEL | 1731m (5679') 1.6%, 1815m (5954') 1.9%, 1818m (5964') 2.0%, 1823m (5980') 2.2%, 1830m (6003') 2.5%, 1841m (6040') 3.3%, 1853m (6079') 5.0% |

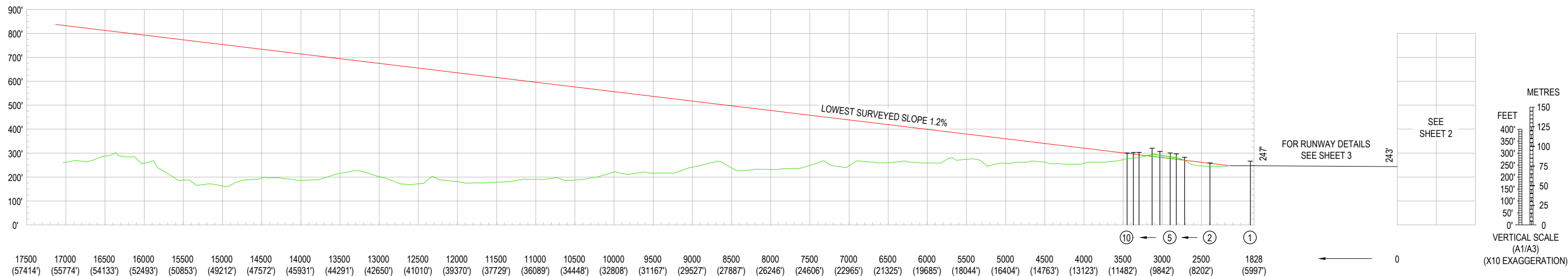
NOTES

- AZIMUTH AND COORDINATES FOR THIS SURVEY ARE BASED ON MGA (GDA94) ZONE 50 THE VERTICAL DATUM BEING AHD.
- HORIZONTAL DIMENSIONS IN METRES (FEET) ELEVATIONS IN FEET
- USERS OF THIS CHART SHOULD NOTIFY ANY ERRORS OR OMISSIONS AS SOON AS THEY BECOME APPARENT TO :-

PROJECT DIRECTOR
NATIONAL AIRFIELD PROJECT
BP26-1C-052
DEPARTMENT OF DEFENCE
CANBERRA ACT 2600
TEL: (02) 6266 8081
- FOR FURTHER INFORMATION REGARDING THIS CHART CONTACT THE ABOVE
- MAGNETIC VARIATION 1°27' W (NOVEMBER 2017)
- AERIAL SURVEY COMPLETED 6 JANUARY 2016.
GROUND SURVEY CHECKS AND VERIFICATION MARCH 2016.

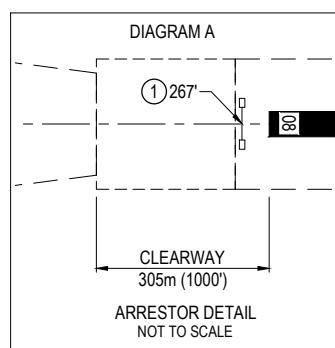
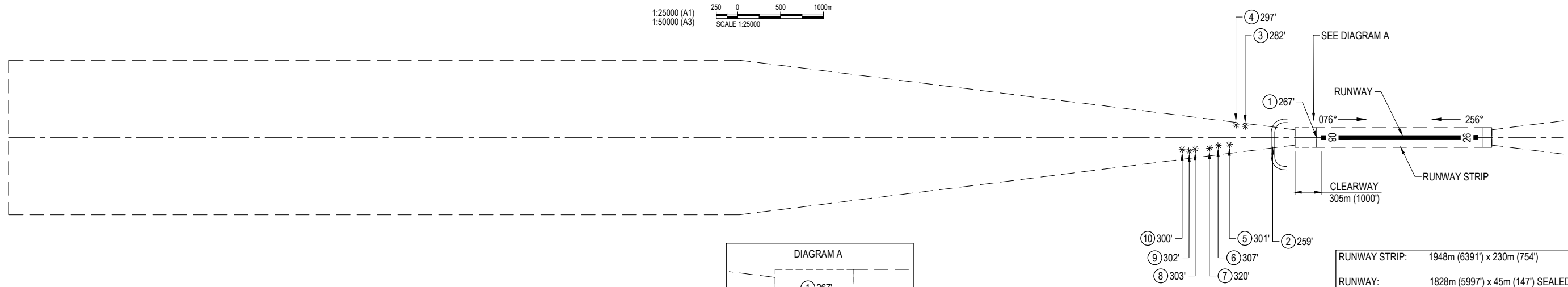
LEGEND

- OBSTRUCTIONS AND OBSTACLES**
- 1 OBSTACLE NUMBER
 - 392' TOP ELEVATION IN FEET
 - * TREE(S) OR VEGETATION
 - BUILDING OR LARGE STRUCTURE
 - POLE, TOWER, SPIRE, POST ETC
 - △ ANTENNA
 - MOVING (ROADS, RAILWAY TRACKS ETC)
 - TERRAIN PENETRATING LOWEST SURVEYED SLOPE
 - OVERHEAD TRANSMISSION LINE
 - FENCE LINE



RUNWAY 26

1:25000 (A1)
1:50000 (A3)
SCALE 1:25000



THE TYPE A SURVEY HAS BEEN CONDUCTED IN ACCORDANCE WITH ICAO ANNEX 4 AND DEPARTMENT OF DEFENCE REQUIREMENTS. THE CHART CLEARLY SHOWS THE GRAPHICAL RESULTS OF THE SURVEY AND HAS BEEN CHECKED FOR ACCURACY AND COMPLETENESS OF INFORMATION. THE CHART IS CERTIFIED CORRECT FOR PUBLICATION.

[Signature]
DANIEL GEEVES
REGISTERED SURVEYOR
aurecon
23/11/2017
DATE



CLIENT

Australian Government
Department of Defence
Estate and Infrastructure Group

| REV | DATE | REVISION DETAILS | APPROVED |
|-----|----------|------------------|----------|
| A | 06.05.16 | DRAFT FOR REVIEW | |
| B | 03.06.16 | FINAL FOR REVIEW | |
| C | 22.11.16 | FINAL FOR REVIEW | |
| D | 05.12.16 | SIGNED FOR ISSUE | GG |
| E | 16.12.16 | SIGNED FOR ISSUE | GG |
| F | 23.11.17 | SIGNED FOR ISSUE | GG |

| SCALE | SIZE | SIGNED FOR ISSUE |
|-----------------------|-------|----------------------|
| AS SHOWN | A1/A3 | NOT FOR CONSTRUCTION |
| DRAWN | | APPROVED |
| AM | | |
| SURVEYED | | DATE 23.11.17 |
| PD / AAM | | |
| CHECKED | | |
| DGG / AIRPORT SURVEYS | | GARRY GRAHAM |

| PROJECT | TITLE | DRAWING No. | PROJECT No. | WBS | TYPE | DISC | NUMBER | REV |
|--|--|-------------|-------------|-----|------|------|--------|-----|
| OBSTACLE LIMITATION SURVEYS AND ASSESSMENT | GINGIN AIRFIELD AERODROME OBSTACLE CHART ICAO TYPE A (OPERATING LIMITATIONS) ISSUED NOVEMBER 2017 RUNWAY 26 - SHEET 1 OF 4 | 248842 | D21012 | DRG | CV | | 002 | F |

LEGEND

- LOWEST SURVEYED SLOPE
- GROUND LEVEL
- - - MOST LIMITING OBSTACLE
- 1 OBSTACLE

DECLARED DISTANCES FOR RUNWAY 08

| | |
|---|--|
| TAKE OFF RUN AVAILABLE (TORA) | 1828m (5997') |
| TAKE OFF DISTANCE AVAILABLE (TODA) | 1988m (6522') |
| ACCELERATE STOP DISTANCE AVAILABLE (ASDA) | 1828m (5997') |
| LANDING DISTANCE AVAILABLE (LDA) | 1828m (5997') |
| SUPPLEMENTARY TAKE OFF DISTANCE AVAILABLE (STODA) | 1524m (5000') 1.6%, 1578m (5177') 1.9%, 1592m (5223') 2.0%, 1618m (5308') 2.2%, 1648m (5406') 2.5%, 1703m (5587') 3.3%, 1762m (5780') 5.0% |
| -ARRESTOR BARRIER ERECTED | |
| -NET POLES 21 FEET ABOVE GROUND LEVEL | |
| SUPPLEMENTARY TAKE OFF DISTANCE AVAILABLE (STODA) | 1814m (5951') 1.6%, 1827m (5994') 1.9%, 1829m (6000') 2.0%, 1833m (6013') 2.2%, 1839m (6033') 2.5%, 1848m (6062') 3.3%, 1858m (6095') 5.0% |
| -ARRESTOR BARRIER RETRACTED | |
| -NET POLES 5 FEET ABOVE GROUND LEVEL | |

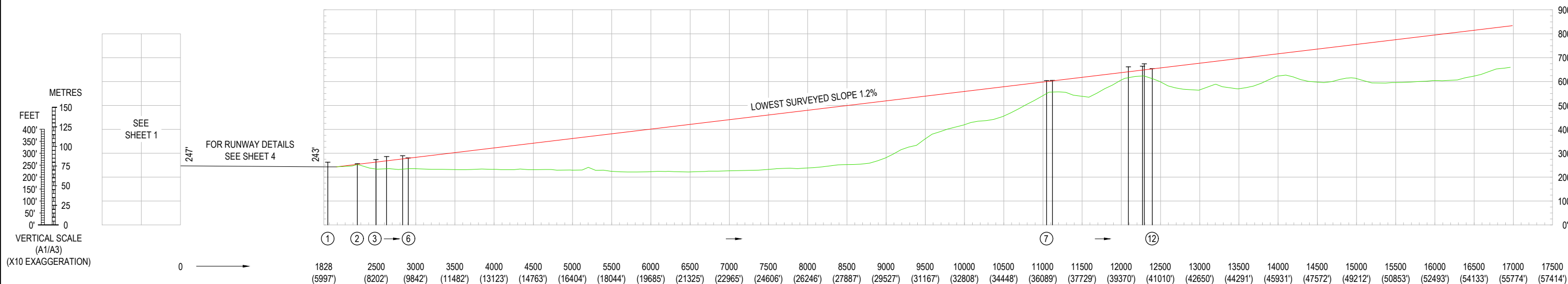
NOTES

- AZIMUTH AND COORDINATES FOR THIS SURVEY ARE BASED ON MGA (GDA94) ZONE 50 THE VERTICAL DATUM BEING AHD.
- HORIZONTAL DIMENSIONS IN METRES (FEET) ELEVATIONS IN FEET
- USERS OF THIS CHART SHOULD NOTIFY ANY ERRORS OR OMISSIONS AS SOON AS THEY BECOME APPARENT TO :-

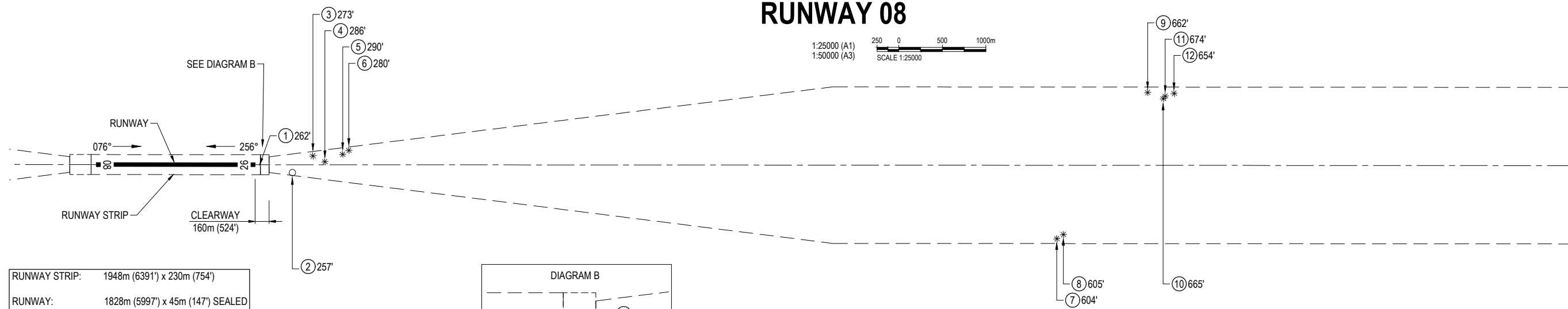
PROJECT DIRECTOR
NATIONAL AIRFIELD PROJECT
BP26-1C-052
DEPARTMENT OF DEFENCE
CANBERRA ACT 2600
TEL: (02) 6266 8081
- FOR FURTHER INFORMATION REGARDING THIS CHART CONTACT THE ABOVE
- MAGNETIC VARIATION 1°27' W (NOVEMBER 2017)
- AERIAL SURVEY COMPLETED 6 JANUARY 2016.
GROUND SURVEY CHECKS AND VERIFICATION MARCH 2016.

LEGEND

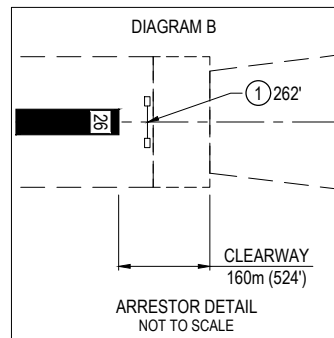
- OBSTRUCTIONS AND OBSTACLES**
- 1 OBSTACLE NUMBER
 - 392' TOP ELEVATION IN FEET
 - * TREE(S) OR VEGETATION
 - BUILDING OR LARGE STRUCTURE
 - POLE, TOWER, SPIRE, POST ETC
 - △ ANTENNA
 - MOVING (ROADS, RAILWAY TRACKS ETC)
 - TERRAIN PENETRATING LOWEST SURVEYED SLOPE
 - OVERHEAD TRANSMISSION LINE
 - FENCE LINE



RUNWAY 08



RUNWAY STRIP: 1948m (6391') x 230m (754')
 RUNWAY: 1828m (5997') x 45m (147') SEALED



THE TYPE A SURVEY HAS BEEN CONDUCTED IN ACCORDANCE WITH ICAO ANNEX 4 AND DEPARTMENT OF DEFENCE REQUIREMENTS. THE CHART CLEARLY SHOWS THE GRAPHICAL RESULTS OF THE SURVEY AND HAS BEEN CHECKED FOR ACCURACY AND COMPLETENESS OF INFORMATION. THE CHART IS CERTIFIED CORRECT FOR PUBLICATION.

Daniel Geeves
 DANIEL GEEVES
 REGISTERED SURVEYOR
 aurecon
 DATE: 23/11/2017



CLIENT

Australian Government
 Department of Defence
 Estate and Infrastructure Group

| REV | DATE | REVISION DETAILS | APPROVED |
|-----|----------|------------------|----------|
| A | 06.05.16 | DRAFT FOR REVIEW | |
| B | 03.06.16 | FINAL FOR REVIEW | |
| C | 22.11.16 | FINAL FOR REVIEW | |
| D | 05.12.16 | SIGNED FOR ISSUE | GG |
| E | 16.12.16 | SIGNED FOR ISSUE | GG |
| F | 23.11.17 | SIGNED FOR ISSUE | GG |

| SCALE | SIZE | SIGNED FOR ISSUE | PROJECT |
|----------------|-----------------------|----------------------|--|
| AS SHOWN | A1/A3 | NOT FOR CONSTRUCTION | OBSTACLE LIMITATION SURVEYS AND ASSESSMENT |
| DRAWN | AM | APPROVED | TITLE |
| SURVEYED | PD / AAM | GARRY GRAHAM | GINGIN AIRFIELD AERODROME OBSTACLE CHART ICAO TYPE A (OPERATING LIMITATIONS) ISSUED NOVEMBER 2017 RUNWAY 08 - SHEET 2 OF 4 |
| CHECKED | DGG / AIRPORT SURVEYS | | DRAWING No. PROJECT No. WBS TYPE DISC NUMBER REV |
| | | | 248842 - D21012 - DRG - CV - 003 - F |

DEPARTMENT OF DEFENCE

ESTATE AND INFRASTRUCTURE GROUP

AERODROME OBSTACLE CHART - ICAO TYPE A
(OPERATING LIMITATIONS) NOVEMBER 2017, COMPILED BY AURECON

TO BE READ IN CONJUNCTION WITH CURRENT NOTAMS

THE ORIGIN OF THE TAKE OFF SURFACE IS LOCATED AT THE END OF THE CLEARWAY
DISTANCES COMMENCE FROM THE AIRFIELD RE-PSM AT THE START OF THE TAKE-OFF RUNWAY (SOT)

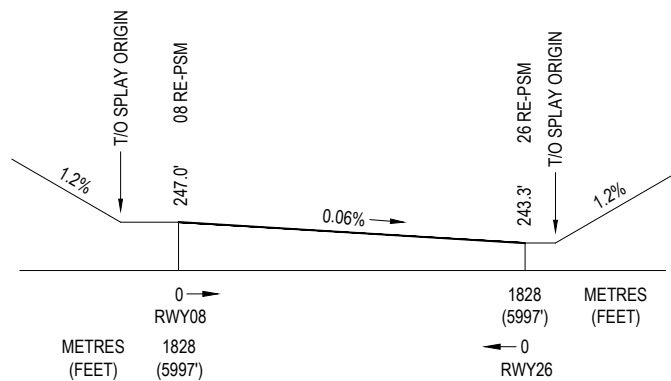
DATUM

AZIMUTH AND COORDINATES FOR THIS SURVEY ARE BASED ON MGA (GDA94) ZONE 50
THE VERTICAL DATUM BEING AHD.

DEFINITIONS

- RE-PSM: RUNWAY END PERMANENT SURVEY MARK
- LENGTH OF INNER EDGE 180m
- RATE OF DIVERGENCE OF SPLAY (EACH SIDE) 12.5%
- FINAL WIDTH 1800m
- OVERALL LENGTH 15000m

| 26 TAKE OFF | | | | | | | | | | | | | | | | | | |
|----------------------------------|------------|-------|--------|-------|-------|--------|-----------|------------|---------------|-------|--------------------------|-------------------|---------|--------|--------|-----------------|--------------------------|--|
| RE - PSM AT START OF TORA | | | | | | | | | | | RUNWAY MAGNETIC BEARING | | TORA | | TODA | | ELEVATION AT T.O. ORIGIN | |
| REF No | GEOGRAPHIC | | | | | | MGA | | ELEVATION | | (DEG) (MIN) (SEC) | (m) | (FT) | (m) | (FT) | (m) | (FT) | |
| | LAT | | | LONG | | | EASTING | NORTHING | (m) | (FT) | | | | | | | | |
| | (DEG) | (MIN) | (SEC) | (DEG) | (MIN) | (SEC) | | | | | | | | | | | | |
| | -31° | 27' | 43.99" | 115° | 52' | 20.33" | 392863.79 | 6518620.28 | 74.2 | 243.3 | 256° 27' 11" | 1828 | 5997 | 2133 | 6998 | 75.3 | 247.0 | |
| OBJECTS THAT APPEAR ON THE CHART | | | | | | | | | | | | | | | | | | |
| REF No | GEOGRAPHIC | | | | | | MGA | | ELEVATION TOP | | TYPE OF OBSTACLE | DISTANCE FROM SOT | | OFFSET | | GRADIENT TO TOP | | |
| | (DEG) | (MIN) | (SEC) | (DEG) | (MIN) | (SEC) | EASTING | NORTHING | (m) | (FT) | | (m) | (FT) | (m) | (FT) | | % | |
| 1 | -31° | 27' | 59.76" | 115° | 51' | 11.68" | 391057.22 | 6518116.03 | 81.3 | 266.8 | ARRESTOR BARRIER ERECTED | 1876.1 | 6155.2 | - | - | - | | |
| 2 | -31° | 28' | 07.91" | 115° | 50' | 53.98" | 390592.73 | 6517860.11 | 78.8 | 258.5 | MOVING | 2392.4 | 7849.2 | 121.7L | 399.1L | 1.34 | | |
| 3 | -31° | 28' | 02.72" | 115° | 50' | 39.70" | 390214.24 | 6518016.07 | 86.0 | 282.2 | TREE | 2715.1 | 8907.9 | 130.4R | 427.8R | 1.84 | | |
| 4 | -31° | 28' | 03.14" | 115° | 50' | 35.63" | 390106.72 | 6518002.00 | 90.4 | 296.7 | TREE | 2822.5 | 9260.2 | 145.7R | 478.1R | 2.20 | | |
| 5 | -31° | 28' | 11.00" | 115° | 50' | 35.05" | 390094.05 | 6517759.92 | 91.7 | 300.7 | TREE | 2899.8 | 9513.8 | 84.1L | 275.9L | 2.13 | | |
| 6 | -31° | 28' | 12.45" | 115° | 50' | 30.38" | 389971.29 | 6517713.75 | 93.6 | 307.2 | TREE | 3030.5 | 9942.6 | 95.6L | 313.5L | 2.04 | | |
| 7 | -31° | 28' | 14.20" | 115° | 50' | 26.97" | 389881.92 | 6517658.97 | 97.6 | 320.3 | TREE | 3131.3 | 10273.4 | 124.3L | 407.8L | 2.24 | | |
| 8 | -31° | 28' | 15.93" | 115° | 50' | 20.96" | 389723.87 | 6517603.91 | 92.3 | 302.9 | TREE | 3298.4 | 10821.6 | 134.8L | 442.4L | 1.46 | | |
| 9 | -31° | 28' | 17.26" | 115° | 50' | 18.58" | 389661.41 | 6517562.40 | 92.2 | 302.4 | TREE | 3369.7 | 11055.6 | 158.0L | 518.5L | 1.36 | | |
| 10 | -31° | 28' | 17.36" | 115° | 50' | 15.43" | 389578.48 | 6517558.52 | 91.6 | 300.4 | TREE | 3450.7 | 11321.2 | 139.5L | 457.6L | 1.23 | | |



08/26 RWY LONGITUDINAL SECTION
NOT TO SCALE

THE TYPE A SURVEY HAS BEEN CONDUCTED IN ACCORDANCE WITH ICAO ANNEX 4 AND DEPARTMENT OF DEFENCE REQUIREMENTS. THE CHART CLEARLY SHOWS THE GRAPHICAL RESULTS OF THE SURVEY AND HAS BEEN CHECKED FOR ACCURACY AND COMPLETENESS OF INFORMATION. THE CHART IS CERTIFIED CORRECT FOR PUBLICATION.

[Signature]
DANIEL GEEVES
REGISTERED SURVEYOR
aurecon

23/11/2017
DATE



www.aurecongroup.com



| REV | DATE | REVISION DETAILS | APPROVED |
|-----|----------|------------------|----------|
| A | 06.05.16 | DRAFT FOR REVIEW | |
| B | 03.06.16 | FINAL FOR REVIEW | |
| C | 22.11.16 | FINAL FOR REVIEW | |
| D | 05.12.16 | SIGNED FOR ISSUE | GG |
| E | 16.12.16 | SIGNED FOR ISSUE | GG |
| F | 23.11.17 | SIGNED FOR ISSUE | GG |

| SCALE | SIZE |
|-----------------------|-------|
| AS SHOWN | A1/A3 |
| DRAWN | |
| AM | |
| SURVEYED | |
| PD / AAM | |
| CHECKED | |
| DGG / AIRPORT SURVEYS | |

| SIGNED FOR ISSUE | APPROVED |
|----------------------|----------|
| NOT FOR CONSTRUCTION | |
| <i>[Signature]</i> | |
| GARRY GRAHAM | |
| DATE | 23.11.17 |

| PROJECT | TITLE | DRAWING No. | PROJECT No. | WBS | TYPE | DISC | NUMBER | REV |
|--|--|-------------|-------------|-----|------|------|--------|-----|
| OBSTACLE LIMITATION SURVEYS AND ASSESSMENT | GINGIN AIRFIELD AERODROME OBSTACLE CHART ICAO TYPE A (OPERATING LIMITATIONS) ISSUED NOVEMBER 2017 RUNWAY 26 - SHEET 3 OF 4 | 248842 | D21012 | DRG | CV | 004 | F | |

