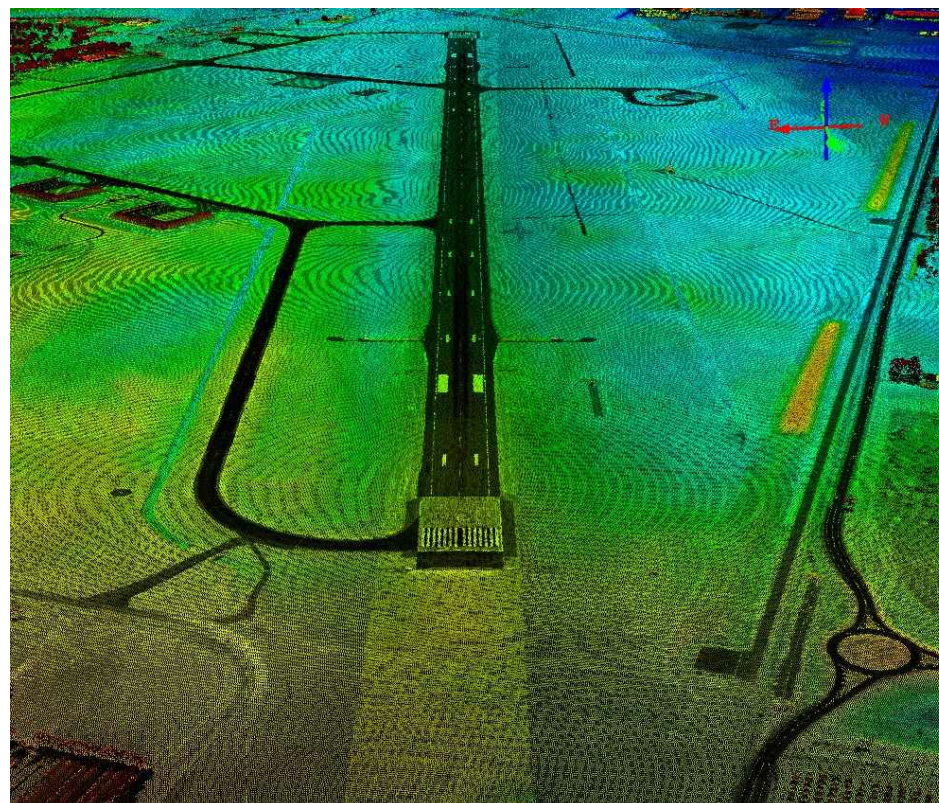


OBSTACLE LIMITATION SURVEYS AND ASSESSMENT

RAAF BASE EDINBURGH AERODROME OBSTACLE CHART ICAO TYPE A
(OPERATING LIMITATIONS) ISSUED FEBRUARY 2018



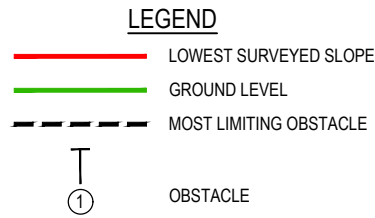
REV	DATE	REVISION DETAILS	APPROVED
A	12.07.16	FINAL FOR REVIEW	
B	28.04.17	SIGNED FOR ISSUE	GG
C	19.02.18	SIGNED FOR ISSUE	GG

SCALE	SIZE
AS SHOWN	A1/A3
DRAWN	AM
SURVEYED	AB / AAM
CHECKED	DGG

SIGNED FOR ISSUE	DATE
NOT FOR CONSTRUCTION	19.02.18
	
GARRY GRAHAM	

PROJECT	TITLE	DRAWING No.	PROJECT No.	WBS	TYPE	DISC	NUMBER	REV
OBSTACLE LIMITATION SURVEYS AND ASSESSMENT	RAAF BASE EDINBURGH AERODROME OBSTACLE CHART ICAO TYPE A (OPERATING LIMITATIONS) ISSUED FEBRUARY 2018 COVER SHEET	248842	D21008	DRG	CV	001	C	

DECLARED DISTANCES FOR RUNWAY 36	
TAKE OFF RUN AVAILABLE (TORA)	2560m (8398')
TAKE OFF DISTANCE AVAILABLE (TODA)	2620m (8595') 2.63%
ACCELERATE STOP DISTANCE AVAILABLE (ASDA)	2560m (8398')
LANDING DISTANCE AVAILABLE (LDA)	2560m (8398')
SUPPLEMENTARY TAKE OFF DISTANCE AVAILABLE (STODA)	2126m (6975') 1.6%, 2329m (7641') 1.9%, 2382m (7814') 2.0%, 2473m (8113') 2.2%, 2581m (8467') 2.5%



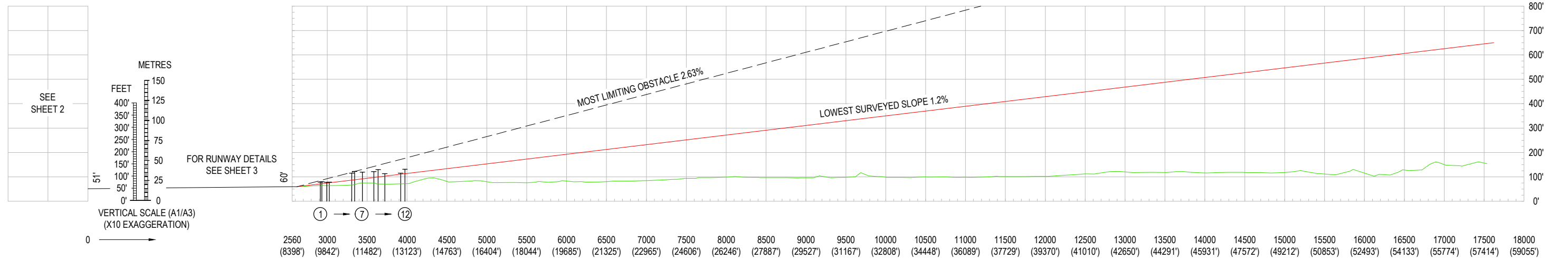
NOTES

- AZIMUTH AND COORDINATES FOR THIS SURVEY ARE BASED ON MGA (GDA94) ZONE 54 THE VERTICAL DATUM BEING AHD.
- HORIZONTAL DIMENSIONS IN METRES (FEET) ELEVATIONS IN FEET
- USERS OF THIS CHART SHOULD NOTIFY ANY ERRORS OR OMISSIONS AS SOON AS THEY BECOME APPARENT TO :-

PROJECT DIRECTOR
NATIONAL AIRFIELD PROJECT
BP26-1C-052
DEPARTMENT OF DEFENCE
CANBERRA ACT 2600
TEL: (02) 6266 8081
- FOR FURTHER INFORMATION REGARDING THIS CHART CONTACT THE ABOVE
- MAGNETIC VARIATION 7°59' E (FEBRUARY 2018)
- AERIAL SURVEY COMPLETED FEBRUARY 2016.
GROUND SURVEY CHECKS AND VERIFICATION MARCH / APRIL 2016.

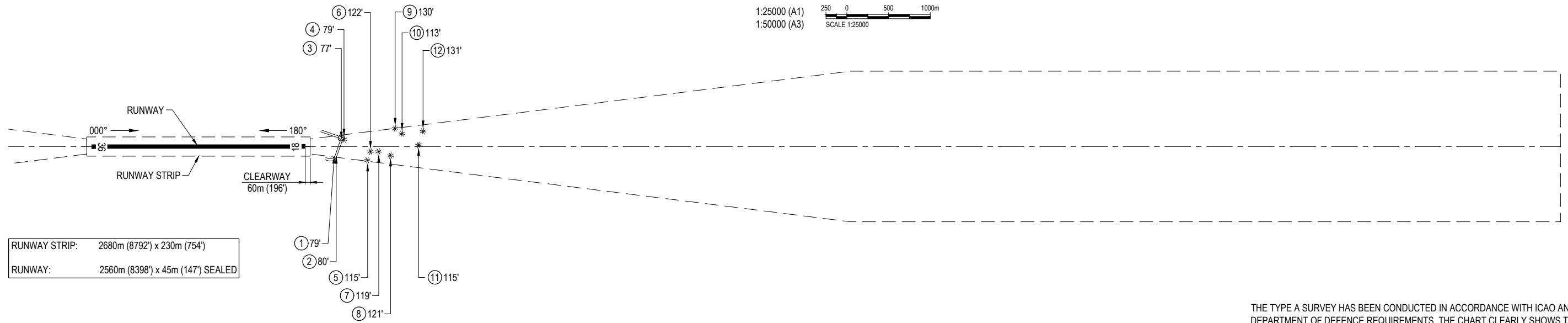
LEGEND

- OBSTRUCTIONS AND OBSTACLES**
- ① OBSTACLE NUMBER
 - 392' TOP ELEVATION IN FEET
 - * TREE(S) OR VEGETATION
 - BUILDING OR LARGE STRUCTURE
 - POLE, TOWER, SPIRE ETC
 - △ ANTENNA
 - MOVING (ROADS, RAILWAY TRACKS ETC)
 - (Green line) TERRAIN PENETRATING LOWEST SURVEYED SLOPE
 - (Dashed line) OVERHEAD TRANSMISSION LINE
 - (Dashed line) FENCE LINE

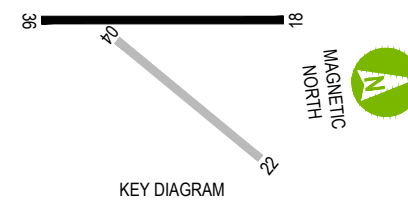


RUNWAY 36

1:25000 (A1)
1:50000 (A3)
SCALE 1:25000



RUNWAY STRIP: 2680m (8792') x 230m (754')
RUNWAY: 2560m (8398') x 45m (147') SEALED



THE TYPE A SURVEY HAS BEEN CONDUCTED IN ACCORDANCE WITH ICAO ANNEX 4 AND DEPARTMENT OF DEFENCE REQUIREMENTS. THE CHART CLEARLY SHOWS THE GRAPHICAL RESULTS OF THE SURVEY AND HAS BEEN CHECKED FOR ACCURACY AND COMPLETENESS OF INFORMATION. THE CHART IS CERTIFIED CORRECT FOR PUBLICATION.

DANIEL GEEVES
SENIOR SURVEYOR
aurecon
19/02/2018
DATE



CLIENT

Australian Government
Department of Defence
Estate and Infrastructure Group

REV	DATE	REVISION DETAILS	APPROVED
A	12.07.16	FINAL FOR REVIEW	
B	28.04.17	SIGNED FOR ISSUE	GG
C	19.02.18	SIGNED FOR ISSUE	GG

SCALE	SIZE
AS SHOWN	A1/A3
DRAWN	
AM	
SURVEYED	
AB / AAM	
CHECKED	
DGG	

SIGNED FOR ISSUE
NOT FOR CONSTRUCTION

APPROVED

GARRY GRAHAM
DATE 19.02.18

PROJECT	TITLE	DRAWING No.	PROJECT No.	WBS	TYPE	DISC	NUMBER	REV
OBSTACLE LIMITATION SURVEYS AND ASSESSMENT	RAAF BASE EDINBURGH AERODROME OBSTACLE CHART ICAO TYPE A (OPERATING LIMITATIONS) ISSUED FEBRUARY 2018 RUNWAY 36 - SHEET 1 OF 4	248842	D21008	DRG	CV	002	C	

DECLARED DISTANCES FOR RUNWAY 18	
TAKE OFF RUN AVAILABLE (TORA)	2560m (8398')
TAKE OFF DISTANCE AVAILABLE (TODA)	2620m (8595')
ACCELERATE STOP DISTANCE AVAILABLE (ASDA)	2560m (8398')
LANDING DISTANCE AVAILABLE (LDA)	2560m (8398')
SUPPLEMENTARY TAKE OFF DISTANCE AVAILABLE (STODA)	2506m (8221') 1.6%, 2548m (8359') 1.9%, 2555m (8382') 2.0%, 2558m (8392') 2.2%, 2561m (8402') 2.5%, 2567m (8421') 3.3%, 2573m (8441') 5.0%.

- LEGEND**
- LOWEST SURVEYED SLOPE
 - GROUND LEVEL
 - - - MOST LIMITING OBSTACLE
 - ① OBSTACLE

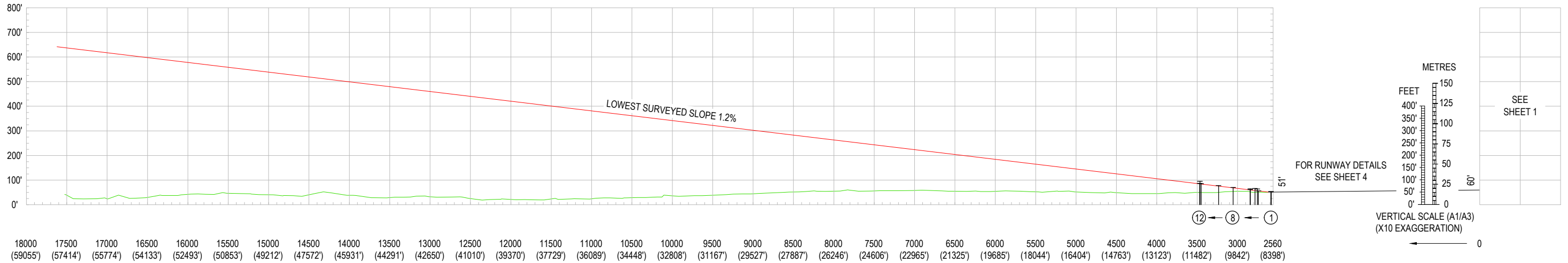
NOTES

- AZIMUTH AND COORDINATES FOR THIS SURVEY ARE BASED ON MGA (GDA94) ZONE 54 THE VERTICAL DATUM BEING AHD.
- HORIZONTAL DIMENSIONS IN METRES (FEET) ELEVATIONS IN FEET
- USERS OF THIS CHART SHOULD NOTIFY ANY ERRORS OR OMISSIONS AS SOON AS THEY BECOME APPARENT TO :-

PROJECT DIRECTOR
NATIONAL AIRFIELD PROJECT
BP26-1C-052
DEPARTMENT OF DEFENCE
CANBERRA ACT 2600
TEL: (02) 6266 8081
- FOR FURTHER INFORMATION REGARDING THIS CHART CONTACT THE ABOVE
- MAGNETIC VARIATION 7°59' E (FEBRUARY 2018)
- AERIAL SURVEY COMPLETED FEBRUARY 2016.
GROUND SURVEY CHECKS AND VERIFICATION MARCH / APRIL 2016.

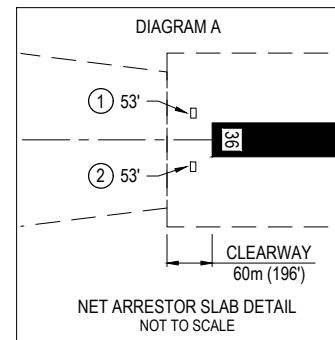
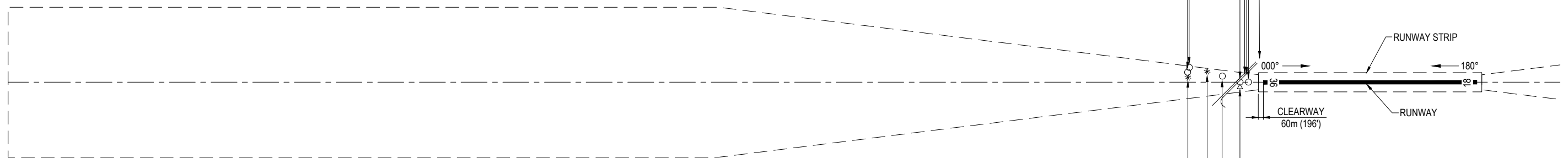
LEGEND

- OBSTRUCTIONS AND OBSTACLES**
- ① OBSTACLE NUMBER
 - 392' TOP ELEVATION IN FEET
 - * TREE(S) OR VEGETATION
 - BUILDING OR LARGE STRUCTURE
 - POLE, TOWER, SPIRE ETC
 - △ ANTENNA
 - MOVING (ROADS, RAILWAY TRACKS ETC)
 - TERRAIN PENETRATING LOWEST SURVEYED SLOPE
 - OVERHEAD TRANSMISSION LINE
 - FENCE LINE



RUNWAY 18

1:25000 (A1)
1:50000 (A3)
SCALE 1:25000



NOTE:
NET ARRESTOR SLABS AND STEEL ROD STRUCTURES ARE LOCATED IN THE CLEARWAY, THEREFORE THE TODA GRADIENT CANNOT BE PUBLISHED

THE TYPE A SURVEY HAS BEEN CONDUCTED IN ACCORDANCE WITH ICAO ANNEX 4 AND DEPARTMENT OF DEFENCE REQUIREMENTS. THE CHART CLEARLY SHOWS THE GRAPHICAL RESULTS OF THE SURVEY AND HAS BEEN CHECKED FOR ACCURACY AND COMPLETENESS OF INFORMATION. THE CHART IS CERTIFIED CORRECT FOR PUBLICATION.

DANIEL GEEVES
SENIOR SURVEYOR
aurecon
19/02/2018
DATE



REV	DATE	REVISION DETAILS	APPROVED
A	12.07.16	FINAL FOR REVIEW	
B	28.04.17	SIGNED FOR ISSUE	GG
C	19.02.18	SIGNED FOR ISSUE	GG

SCALE	SIZE
AS SHOWN	A1/A3
DRAWN	
AM	
SURVEYED	
AB / AAM	
CHECKED	
DGG	

SIGNED FOR ISSUE
NOT FOR CONSTRUCTION

DATE 19.02.18
GARRY GRAHAM

PROJECT	TITLE	DRAWING No.	PROJECT No.	WBS	TYPE	DISC	NUMBER	REV
OBSTACLE LIMITATION SURVEYS AND ASSESSMENT	RAAF BASE EDINBURGH AERODROME OBSTACLE CHART ICAO TYPE A (OPERATING LIMITATIONS) ISSUED FEBRUARY 2018 RUNWAY 18 - SHEET 2 OF 4	248842	D21008	DRG	CV	003	C	

DEPARTMENT OF DEFENCE

ESTATE AND INFRASTRUCTURE GROUP

AERODROME OBSTACLE CHART - ICAO TYPE A
(OPERATING LIMITATIONS) FEBRUARY 2018, COMPILED BY AURECON

TO BE READ IN CONJUNCTION WITH CURRENT NOTAMs

THE ORIGIN OF THE TAKE OFF SURFACE IS LOCATED AT THE END OF THE CLEARWAY
DISTANCES COMMENCE FROM THE RAAF RE-PSM AT THE START OF THE TAKE-OFF RUNWAY (SOT)

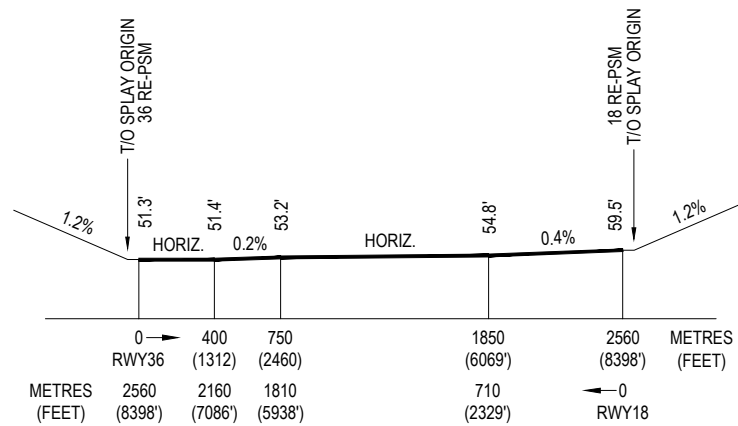
DATUM

AZIMUTH AND COORDINATES FOR THIS SURVEY ARE BASED ON MGA (GDA94) ZONE 54
THE VERTICAL DATUM BEING AHD.

DEFINITIONS

- RE-PSM: RUNWAY END PERMANENT SURVEY MARK
- LENGTH OF INNER EDGE 180m
- RATE OF DIVERGENCE OF SPLAY (EACH SIDE) 12.5%
- FINAL WIDTH 1800m
- OVERALL LENGTH 15000m

36 TAKE OFF																			
RE - PSM AT START OF TORA										RUNWAY MAGNETIC BEARING		TORA		TODA		ELEVATION AT T.O. ORIGIN			
REF No	GEOGRAPHIC						MGA		ELEVATION		(DEG)	(MIN)	(SEC)	(m)	(FT)	(m)	(FT)	(m)	(FT)
	LAT		LONG		EASTING	NORTHING	(m)	(FT)											
	(DEG)	(MIN)	(SEC)	(DEG)					(MIN)	(SEC)									
	-34°	43'	02.48"	138°	36'	48.40	281454.22	6155707.21	15.7	51.3	0°	31'	49"	2560	8398	2620	8595	18.1	59.5
OBJECTS THAT APPEAR ON THE CHART																			
REF No	GEOGRAPHIC						MGA		ELEVATION TOP		TYPE OF OBSTACLE	DISTANCE FROM SOT		OFFSET		GRADIENT TO TOP			
	(DEG)	(MIN)	(SEC)	(DEG)	(MIN)	(SEC)	EASTING	NORTHING	(m)	(FT)		(m)	(FT)	(m)	(FT)	(%)			
1	-34°	41'	29.62"	138°	37'	10.24"	281942.12	6158581.76	23.9	78.5	MOVING	2912.4	9555.2	125.8R	412.6R	1.98			
2	-34°	41'	29.01"	138°	37'	10.46"	281947.62	6158600.40	24.3	79.8	MOVING	2931.6	9618.1	128.9R	422.9R	1.98			
3	-34°	41'	25.95"	138°	37'	01.94"	281728.20	6158689.74	23.6	77.4	ROAD SIGN	2992.9	9819.1	99.9L	327.8L	1.46			
4	-34°	41'	25.00"	138°	37'	02.77"	281748.81	6158719.26	23.9	78.5	TREE	3024.7	9923.6	83.1L	272.7L	1.43			
5	-34°	41'	17.12"	138°	37'	14.07"	282030.60	6158968.94	35.1	115.2	TREE	3307.5	10851.5	165.3R	542.3R	2.47			
6	-34°	41'	15.48"	138°	37'	10.21"	281931.22	6159017.22	37.2	122.0	TREE	3343.0	10968.0	60.7R	199.1R	2.63			
7	-34°	41'	12.35"	138°	37'	10.72"	281941.92	6159113.85	36.4	119.4	TREE	3440.2	11286.8	59.3R	194.4R	2.22			
8	-34°	41'	08.00"	138°	37'	13.48"	282008.99	6159249.51	36.9	121.1	TREE	3583.2	11755.8	108.9R	357.3R	1.95			
9	-34°	41'	04.69"	138°	37'	01.20"	281694.21	6159344.18	39.5	129.7	TREE	3637.8	11935.2	215.2L	706.0L	2.10			
10	-34°	41'	02.33"	138°	37'	04.10"	281766.09	6159418.67	34.4	112.9	TREE	3720.7	12207.0	153.2L	502.5L	1.48			
11	-34°	40'	56.59"	138°	37'	10.50"	281924.83	6159599.27	35.0	114.9	TREE	3919.6	12859.7	18.2L	59.7L	1.30			
12	-34°	40'	54.07"	138°	37'	04.46"	281769.25	6159673.29	39.9	130.8	TREE	3973.7	13037.0	181.7L	596.3L	1.60			



18/36 RWY LONGITUDINAL SECTION
NOT TO SCALE

THE TYPE A SURVEY HAS BEEN CONDUCTED IN ACCORDANCE WITH ICAO ANNEX 4 AND DEPARTMENT OF DEFENCE REQUIREMENTS. THE CHART CLEARLY SHOWS THE GRAPHICAL RESULTS OF THE SURVEY AND HAS BEEN CHECKED FOR ACCURACY AND COMPLETENESS OF INFORMATION. THE CHART IS CERTIFIED CORRECT FOR PUBLICATION.

DANIEL GEEVES
SENIOR SURVEYOR
aurecon

19/02/2018
DATE



REV	DATE	REVISION DETAILS	APPROVED
A	12.07.16	FINAL FOR REVIEW	
B	28.04.17	SIGNED FOR ISSUE	GG
C	19.02.18	SIGNED FOR ISSUE	GG

SCALE	SIZE
AS SHOWN	A1/A3
DRAWN	APPROVED
AM	
SURVEYED	DATE
AB / AAM	19.02.18
CHECKED	
DGG	

SIGNED FOR ISSUE
NOT FOR CONSTRUCTION

GARRY GRAHAM

PROJECT	TITLE	DRAWING No.	PROJECT No.	WBS	TYPE	DISC	NUMBER	REV
OBSTACLE LIMITATION SURVEYS AND ASSESSMENT	RAAF BASE EDINBURGH AERODROME OBSTACLE CHART ICAO TYPE A (OPERATING LIMITATIONS) ISSUED FEBRUARY 2018 RUNWAY 36 - SHEET 3 OF 4	248842	D21008	DRG	CV	004	C	

DEPARTMENT OF DEFENCE

ESTATE AND INFRASTRUCTURE GROUP

AERODROME OBSTACLE CHART - ICAO TYPE A
(OPERATING LIMITATIONS) FEBRUARY 2018, COMPILED BY AURECON

TO BE READ IN CONJUNCTION WITH CURRENT NOTAMs

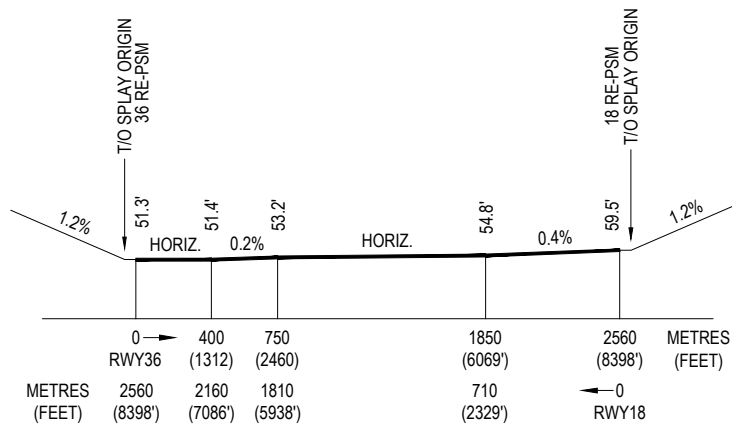
THE ORIGIN OF THE TAKE OFF SURFACE IS LOCATED AT THE END OF THE CLEARWAY
DISTANCES COMMENCE FROM THE RAAF RE-PSM AT THE START OF THE TAKE-OFF RUNWAY (SOT)

DATUM

AZIMUTH AND COORDINATES FOR THIS SURVEY ARE BASED ON MGA (GDA94) ZONE 54
THE VERTICAL DATUM BEING AHD.

DEFINITIONS

- RE-PSM: RUNWAY END PERMANENT SURVEY MARK
- LENGTH OF INNER EDGE 180m
- RATE OF DIVERGENCE OF SPLAY (EACH SIDE) 12.5%
- FINAL WIDTH 1800m
- OVERALL LENGTH 15000m



18/36 RWY LONGITUDINAL SECTION
NOT TO SCALE

18 TAKE OFF																	
RE - PSM AT START OF TORA										RUNWAY MAGNETIC BEARING		TORA		TODA		ELEVATION AT T.O. ORIGIN	
REF No	GEOGRAPHIC					MGA		ELEVATION		(DEG) (MIN) (SEC)	(m)	(FT)	(m)	(FT)	(m)	(FT)	
	LAT		LONG			EASTING	NORTHING	(m)	(FT)								
	(DEG)	(MIN) (SEC)	(DEG)	(MIN)	(SEC)												
	-34°	41' 40.32"	138°	37'	03.30"	281773.38	6158247.76	18.1	59.5	180°	31' 49"	2560	8398	2620	8595	15.7	51.3
OBJECTS THAT APPEAR ON THE CHART																	
REF No	GEOGRAPHIC					MGA		ELEVATION TOP		TYPE OF OBSTACLE	DISTANCE FROM SOT		OFFSET		GRADIENT TO TOP		
	(DEG)	(MIN) (SEC)	(DEG)	(MIN)	(SEC)	EASTING	NORTHING	(m)	(FT)		(m)	(FT)	(m)	(FT)	(m)	(FT)	%
1	-34°	43' 03.11"	138°	36'	46.87"	281415.83	6155686.79	16.2	53.0	NET ARRESTOR SLAB & STEEL ROD STRUCTURES	2585.1	8481.2	35.5R	116.6R	-		
2	-34°	43' 03.46"	138°	36'	49.63"	281486.23	6155677.82	16.3	53.3	NET ARRESTOR SLAB & STEEL ROD STRUCTURES	2585.2	8481.7	35.4L	116.2L	-		
3	-34°	43' 08.27"	138°	36'	47.35"	281431.71	6155528.23	17.1	56.1	POLE	2740.4	8990.8	0.0	0.1R	1.21		
4	-34°	43' 08.21"	138°	36'	43.11"	281324.09	6155527.30	19.4	63.9	MOVING	2754.7	9037.8	106.7R	350.0R	2.77		
5	-34°	43' 09.13"	138°	36'	42.85"	281317.83	6155499.02	20.1	66.0	MOVING	2783.6	9132.4	109.4R	358.8R	2.74		
6	-34°	43' 11.52"	138°	36'	46.76"	281419.12	6155427.77	19.7	64.5	IAS	2841.6	9322.9	0.0	0.0	1.81		
7	-34°	43' 11.81"	138°	36'	49.02"	281476.85	6155420.16	18.6	61.1	ANTENNA ON SHED	2842.0	9324.1	58.2L	191.0L	1.34		
8	-34°	43' 18.00"	138°	36'	42.66"	281319.66	6155225.62	21.3	69.9	POLE / LINES	3054.6	10021.5	73.5R	241.1R	1.30		
9	-34°	43' 23.51"	138°	36'	39.42"	281241.34	6155053.63	23.8	78.0	TREE	3234.9	10613.3	129.7R	425.6R	1.32		
10	-34°	43' 30.21"	138°	36'	36.39"	281169.05	6154845.66	26.0	85.4	LIGHT POLE	3450.3	11319.7	175.5R	575.9R	1.25		
11	-34°	43' 31.27"	138°	36'	40.88"	281284.18	6154815.53	28.9	94.9	TREE	3465.8	11370.7	57.6R	188.9R	1.57		
12	-34°	43' 31.11"	138°	36'	38.47"	281222.61	6154818.99	26.4	86.5	LIGHT POLE	3470.0	11384.7	119.1R	390.7R	1.26		

THE TYPE A SURVEY HAS BEEN CONDUCTED IN ACCORDANCE WITH ICAO ANNEX 4 AND DEPARTMENT OF DEFENCE REQUIREMENTS. THE CHART CLEARLY SHOWS THE GRAPHICAL RESULTS OF THE SURVEY AND HAS BEEN CHECKED FOR ACCURACY AND COMPLETENESS OF INFORMATION. THE CHART IS CERTIFIED CORRECT FOR PUBLICATION.

DANIEL GEEVES
SENIOR SURVEYOR
aurecon

19/02/2018
DATE



www.aurecongroup.com



REV	DATE	REVISION DETAILS	APPROVED
A	12.07.16	FINAL FOR REVIEW	
B	28.04.17	SIGNED FOR ISSUE	GG
C	19.02.18	SIGNED FOR ISSUE	GG

SCALE	SIZE
AS SHOWN	A1/A3
DRAWN	APPROVED
AM	
SURVEYED	DATE
AB / AAM	19.02.18
CHECKED	
DGG	

SIGNED FOR ISSUE
NOT FOR CONSTRUCTION

GARRY GRAHAM

PROJECT	TITLE	DRAWING No.	PROJECT No.	WBS	TYPE	DISC	NUMBER	REV
OBSTACLE LIMITATION SURVEYS AND ASSESSMENT	RAAF BASE EDINBURGH AERODROME OBSTACLE CHART ICAO TYPE A (OPERATING LIMITATIONS) ISSUED FEBRUARY 2018 RUNWAY 18 - SHEET 4 OF 4	248842	D21008	DRG	CV	005	C	