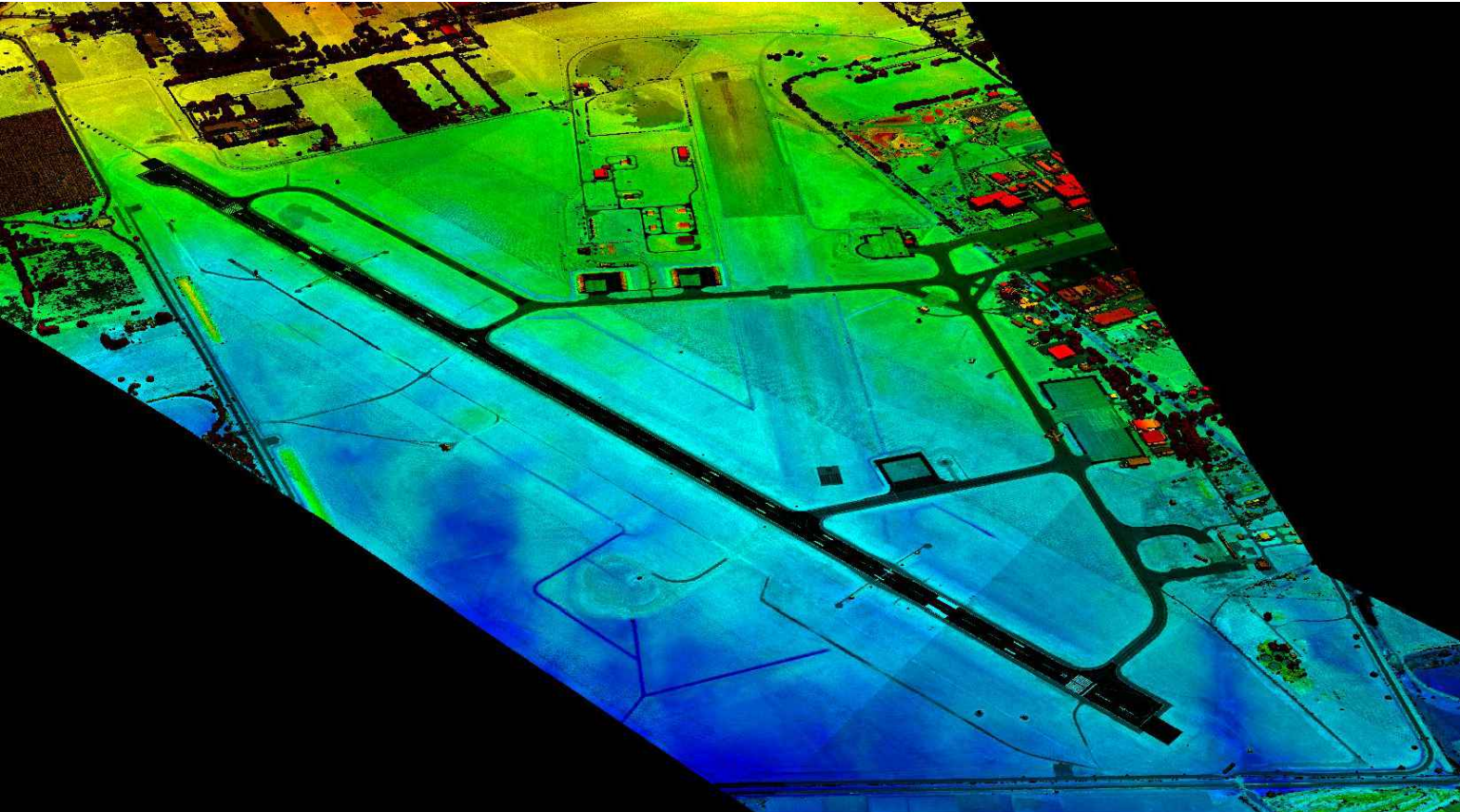



OBSTACLE LIMITATION SURVEYS AND ASSESSMENT

RAAF BASE EDINBURGH
 AERODROME OBSTACLE CHART ICAO TYPE A
 (OPERATING LIMITATIONS) ISSUED DECEMBER 2024



REV	DATE	REVISION DETAILS	APPROVED	SCALE	SIZE	FOR ISSUE	PROJECT
A	25.03.24	FOR REVIEW	DG	AS SHOWN	A1/A3	NOT FOR CONSTRUCTION	OBSTACLE LIMITATION SURVEYS AND ASSESSMENT RAAF BASE EDINBURGH
B	28.06.24	FOR ISSUE	DG				
C	06.12.24	FOR ISSUE - UPDATE RWS WIDTH	DG				
				DRAWN		APPROVED	TITLE
				MH			AERODROME OBSTACLE CHART ICAO TYPE A (OPERATING LIMITATIONS) ISSUED DECEMBER 2024 COVER SHEET
				SURVEYED		DATE	
				KI/AD/AAM		06/12/2024	
				CHECKED			DRAWING No.
				GH			520002
							PROJECT No.
							EST09759
							WBS
							DRG
							TYPE
							UU
							DISC
							EDN
							SITE
							001
							NUMBER
							C
							REV

DECLARED DISTANCES FOR RUNWAY 36	
TAKE OFF RUN AVAILABLE (TORA)	2966m (9731')
TAKE OFF DISTANCE AVAILABLE (TODA)	3026m (9928') 3.88%
ACCELERATE STOP DISTANCE AVAILABLE (ASDA)	2966m (9731')
LANDING DISTANCE AVAILABLE (LDA)	2850m (9350')
SUPPLEMENTARY TAKE OFF DISTANCE AVAILABLE (STODA)	2484m (8149') 1.6%, 2705m (8874') 1.9%, 2762m (9061') 2.0%, 2858m (9376') 2.2%, 2962m (9717') 2.5%, 3006m (9862') 3.3%

LEGEND	
	LOWEST SURVEYED SLOPE
	GROUND LEVEL
	MOST LIMITING OBSTACLE
	OBSTACLE

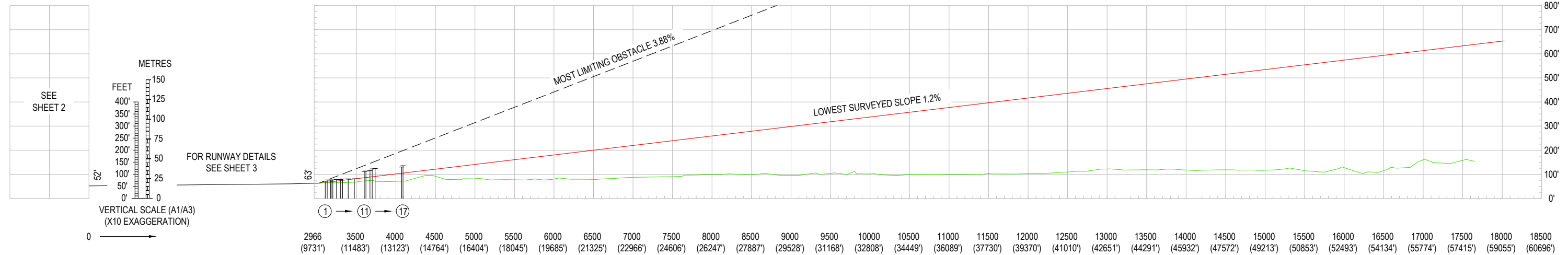
NOTES

- AZIMUTH AND COORDINATES FOR THIS SURVEY ARE BASED ON MGA (GDA2020) ZONE 54 THE VERTICAL DATUM BEING AHD.
- HORIZONTAL DIMENSIONS IN METRES (FEET) ELEVATIONS IN FEET
- USERS OF THIS CHART SHOULD NOTIFY ANY ERRORS OR OMISSIONS AS SOON AS THEY BECOME APPARENT TO :-

AERONAUTICAL INFORMATION SERVICE - AIR FORCE
EMAIL: AIS.AF@DEFENCE.GOV.AU
- FOR FURTHER INFORMATION REGARDING THIS CHART CONTACT THE ABOVE
- MAGNETIC VARIATION 08° 03' E (MAY 2023)
- AERIAL SURVEY COMPLETED MARCH 2023.
GROUND SURVEY CHECKS AND VERIFICATION MARCH 2023.

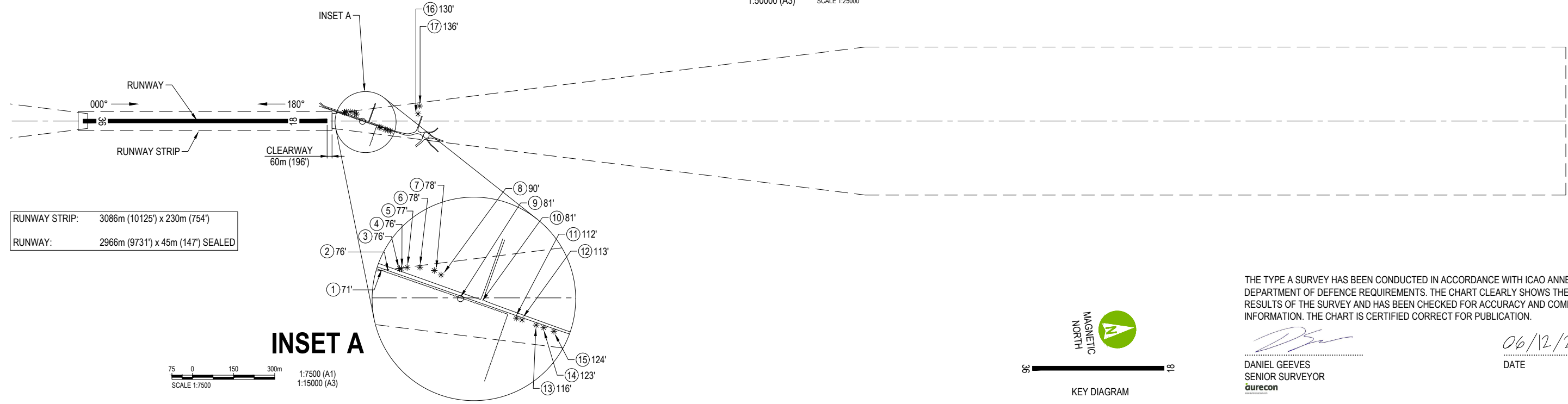
LEGEND

OBSTRUCTIONS AND OBSTACLES	
	OBJECT NUMBER
	TOP ELEVATION IN FEET
	TREE(S) OR VEGETATION
	BUILDING OR LARGE STRUCTURE
	POLE, TOWER, SPIRE ETC
	ANTENNA
	MOVING (ROADS, RAILWAY TRACKS ETC)
	TERRAIN PENETRATING LOWEST SURVEYED SLOPE
	OVERHEAD TRANSMISSION LINE
	FENCE LINE



RUNWAY 36

1:25000 (A1)
1:50000 (A3)
SCALE 1:25000



THE TYPE A SURVEY HAS BEEN CONDUCTED IN ACCORDANCE WITH ICAO ANNEX 4 AND DEPARTMENT OF DEFENCE REQUIREMENTS. THE CHART CLEARLY SHOWS THE GRAPHICAL RESULTS OF THE SURVEY AND HAS BEEN CHECKED FOR ACCURACY AND COMPLETENESS OF INFORMATION. THE CHART IS CERTIFIED CORRECT FOR PUBLICATION.

[Signature]
DANIEL GEEVES
SENIOR SURVEYOR
aurecon
DATE 06/12/2024



CLIENT

Australian Government
Department of Defence
Security and Estate Group

REV	DATE	REVISION DETAILS	APPROVED
A	25.03.24	FOR REVIEW	DG
B	28.06.24	FOR ISSUE	DG
C	06.12.24	FOR ISSUE - UPDATE RWS WIDTH	DG

SCALE	AS SHOWN	SIZE	A1/A3
DRAWN	MH	FOR ISSUE	NOT FOR CONSTRUCTION
SURVEYED	KI/AD/AAM	APPROVED	<i>[Signature]</i>
CHECKED	GH	DATE	06/12/2024
		DANIEL GEEVES	

PROJECT	OBSTACLE LIMITATION SURVEYS AND ASSESSMENT RAAF BASE EDINBURGH						
TITLE	AERODROME OBSTACLE CHART ICAO TYPE A (OPERATING LIMITATIONS) ISSUED DECEMBER 2024 RUNWAY 36 - SHEET 1 OF 3						
DRAWING No.	PROJECT No.	WBS	TYPE	DISC	SITE	NUMBER	REV
520002	EST09759	DRG	UU	EDN	002	C	

LEGEND

- LOWEST SURVEYED SLOPE
- GROUND LEVEL
- - - - MOST LIMITING OBSTACLE
- ① OBSTACLE

DECLARED DISTANCES FOR RUNWAY 18

TAKE OFF RUN AVAILABLE (TORA)	2850m (9350')
TAKE OFF DISTANCE AVAILABLE (TODA)	2910m (9547') (SEE NOTE BELOW)
ACCELERATE STOP DISTANCE AVAILABLE (ASDA)	2850m (9350')
LANDING DISTANCE AVAILABLE (LDA)	2560m (8399')
SUPPLEMENTARY TAKE OFF DISTANCE AVAILABLE (STODA)	2689m (8822') 1.6%, 2750m (9022') 1.9%, 2766m (9074') 2.0%, 2794m (9166') 2.2%, 2828m (9278') 2.5%, 2861m (9386') 3.3%, 2877m (9438') 5.0%

NOTE:
STEEL SIGNPOST LOCATED IN THE CLEARWAY,
THEREFORE THE TODA GRADIENT CANNOT BE PUBLISHED

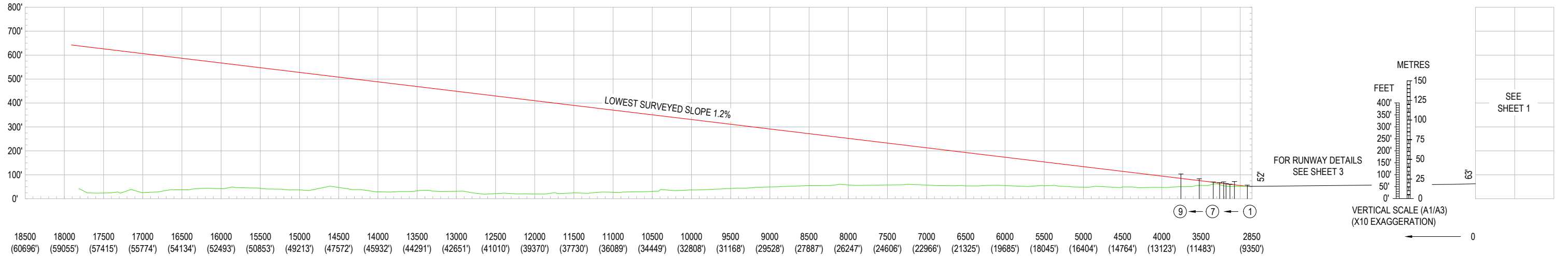
NOTES

- AZIMUTH AND COORDINATES FOR THIS SURVEY ARE BASED ON MGA (GDA2020) ZONE 54 THE VERTICAL DATUM BEING AHD.
- HORIZONTAL DIMENSIONS IN METRES (FEET) ELEVATIONS IN FEET
- USERS OF THIS CHART SHOULD NOTIFY ANY ERRORS OR OMISSIONS AS SOON AS THEY BECOME APPARENT TO :-

AERONAUTICAL INFORMATION SERVICE - AIR FORCE
EMAIL: AIS.AF@DEFENCE.GOV.AU
- FOR FURTHER INFORMATION REGARDING THIS CHART CONTACT THE ABOVE
- MAGNETIC VARIATION 08° 03' E (MAY 2023)
- AERIAL SURVEY COMPLETED MARCH 2023.
GROUND SURVEY CHECKS AND VERIFICATION MARCH 2023.
- MOVING OBJECTS LOCATED ON THE RAIL LINE ARE APPLYING A VERTICAL HEIGHT OF 6.5m TO ALLOW FOR TRAINS CARRYING DOUBLE STACKED CONTAINERS.

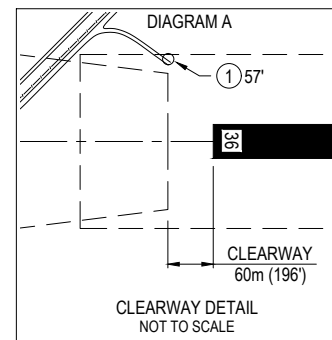
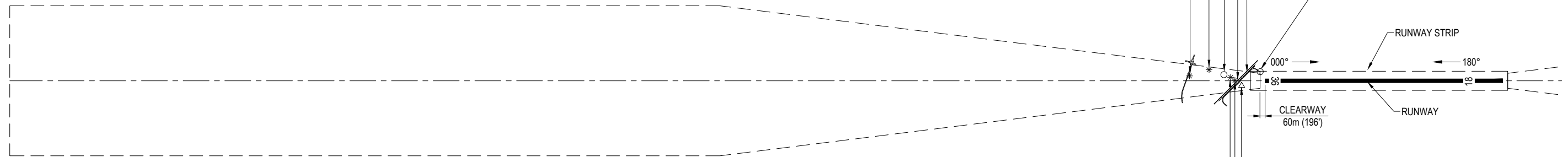
LEGEND

- OBSTRUCTIONS AND OBSTACLES**
- ① OBJECT NUMBER
 - 392 TOP ELEVATION IN FEET
 - * TREE(S) OR VEGETATION
 - BUILDING OR LARGE STRUCTURE
 - POLE, TOWER, SPIRE ETC
 - △ ANTENNA
 - MOVING (ROADS, RAILWAY TRACKS ETC)
 - TERRAIN PENETRATING LOWEST SURVEYED SLOPE
 - OVERHEAD TRANSMISSION LINE
 - FENCE LINE



RUNWAY 18

1:25000 (A1)
1:50000 (A3)
SCALE 1:25000



THE TYPE A SURVEY HAS BEEN CONDUCTED IN ACCORDANCE WITH ICAO ANNEX 4 AND DEPARTMENT OF DEFENCE REQUIREMENTS. THE CHART CLEARLY SHOWS THE GRAPHICAL RESULTS OF THE SURVEY AND HAS BEEN CHECKED FOR ACCURACY AND COMPLETENESS OF INFORMATION. THE CHART IS CERTIFIED CORRECT FOR PUBLICATION.

DANIEL GEEVES
SENIOR SURVEYOR
aurecon
06/12/2024
DATE

REV	DATE	REVISION DETAILS	APPROVED
A	25.03.24	FOR REVIEW	DG
B	28.06.24	FOR ISSUE	DG
C	06.12.24	FOR ISSUE - UPDATE RWS WIDTH	DG

SCALE	AS SHOWN
SIZE	A1/A3
DRAWN	MH
SURVEYED	KI/AD/AAM
CHECKED	GH

FOR ISSUE
NOT FOR CONSTRUCTION

APPROVED

DATE
06/12/2024
DANIEL GEEVES

PROJECT	OBSTACLE LIMITATION SURVEYS AND ASSESSMENT RAAF BASE EDINBURGH						
TITLE	AERODROME OBSTACLE CHART ICAO TYPE A (OPERATING LIMITATIONS) ISSUED DECEMBER 2024 RUNWAY 18 - SHEET 2 OF 3						
DRAWING No.	PROJECT No.	WBS	TYPE	DISC	SITE	NUMBER	REV
520002	EST09759	DRG	UU	EDN	003	C	

