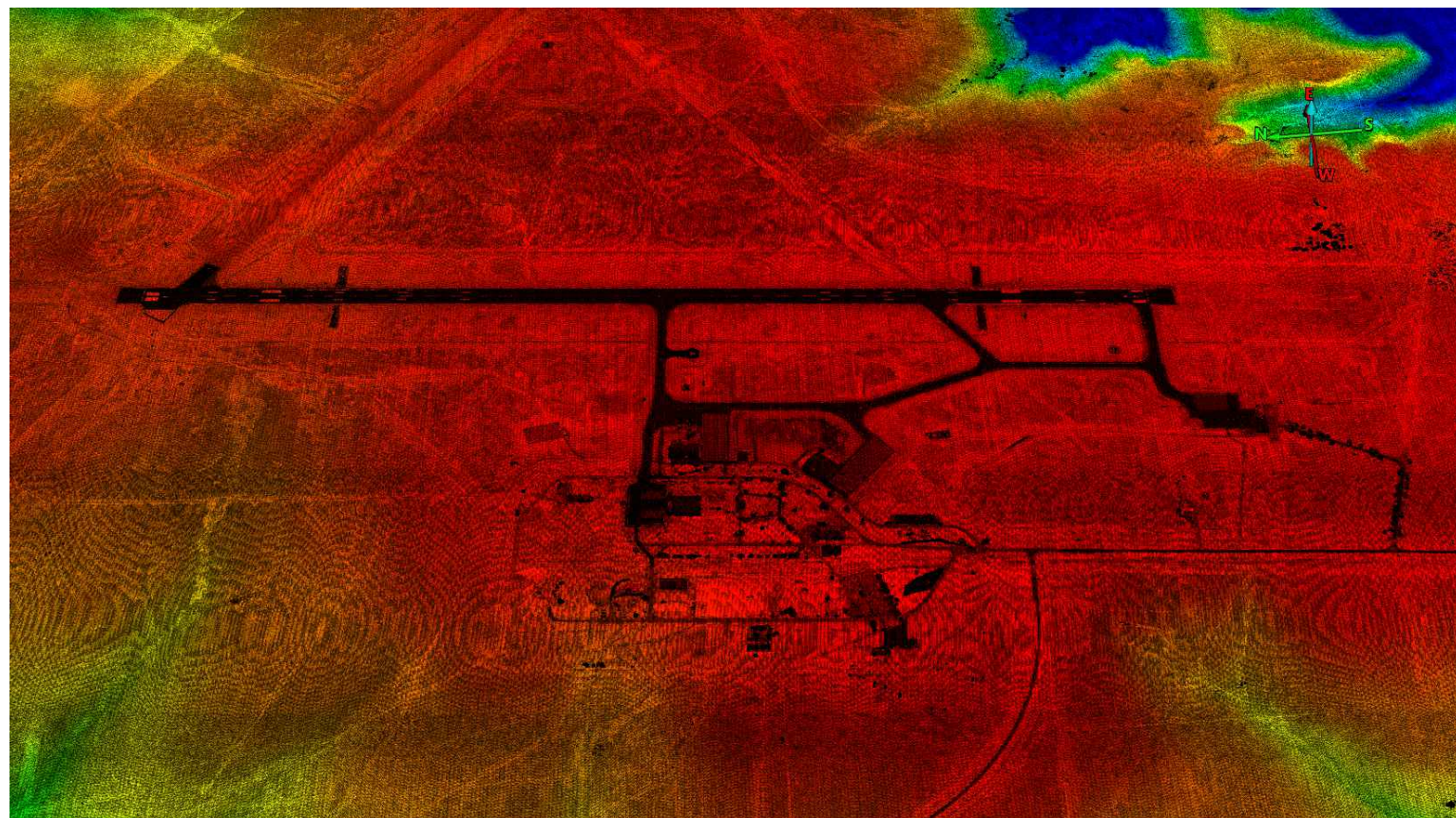



OBSTACLE LIMITATION SURVEYS AND ASSESSMENT

RAAF BASE WOOMERA
 AERODROME OBSTACLE CHART ICAO TYPE A
 (OPERATING LIMITATIONS) ISSUED NOVEMBER 2024



| REV | DATE | REVISION DETAILS | APPROVED | SCALE | SIZE | FOR ISSUE | PROJECT |
|-----|----------|------------------------------|----------|-----------------|-------|---|---|
| A | 25.01.24 | FOR REVIEW | DG | AS SHOWN | A1/A3 | NOT FOR CONSTRUCTION | OBSTACLE LIMITATION SURVEYS AND ASSESSMENT RAAF BASE WOOMERA |
| B | 25.03.24 | FOR REVIEW | DG | | | | |
| C | 28.06.24 | FOR ISSUE | DG | | | | |
| D | 15.11.24 | FOR ISSUE - UPDATE RWS WIDTH | DG | | | | |
| | | | | DRAWN | | APPROVED | TITLE |
| | | | | MH | |  | AERODROME OBSTACLE CHART ICAO TYPE A (OPERATING LIMITATIONS) ISSUED NOVEMBER 2024 COVER SHEET |
| | | | | SURVEYED | | DATE | |
| | | | | AD/AAM | | 15/11/2024 | |
| | | | | CHECKED | | | DRAWING No. |
| | | | | GH | | | 520002 |
| | | | | | | | PROJECT No. |
| | | | | | | | EST09759 |
| | | | | | | | WBS |
| | | | | | | | DRG |
| | | | | | | | TYPE |
| | | | | | | | UU |
| | | | | | | | DISC |
| | | | | | | | WOM |
| | | | | | | | SITE |
| | | | | | | | 001 |
| | | | | | | | NUMBER |
| | | | | | | | 001 |
| | | | | | | | REV |
| | | | | | | | D |

| DECLARED DISTANCES FOR RUNWAY 18 | |
|---|---------------------|
| TAKE OFF RUN AVAILABLE (TORA) | 2372m (7782') |
| TAKE OFF DISTANCE AVAILABLE (TODA) | 2672m (8766') 1.35% |
| ACCELERATE STOP DISTANCE AVAILABLE (ASDA) | 2372m (7782') |
| LANDING DISTANCE AVAILABLE (LDA) | 2372m (7782') |
| SUPPLEMENTARY TAKE OFF DISTANCE AVAILABLE (STODA) | NIL |

| LEGEND | |
|--------|------------------------|
| | LOWEST SURVEYED SLOPE |
| | GROUND LEVEL |
| | MOST LIMITING OBSTACLE |
| | OBSTACLE |

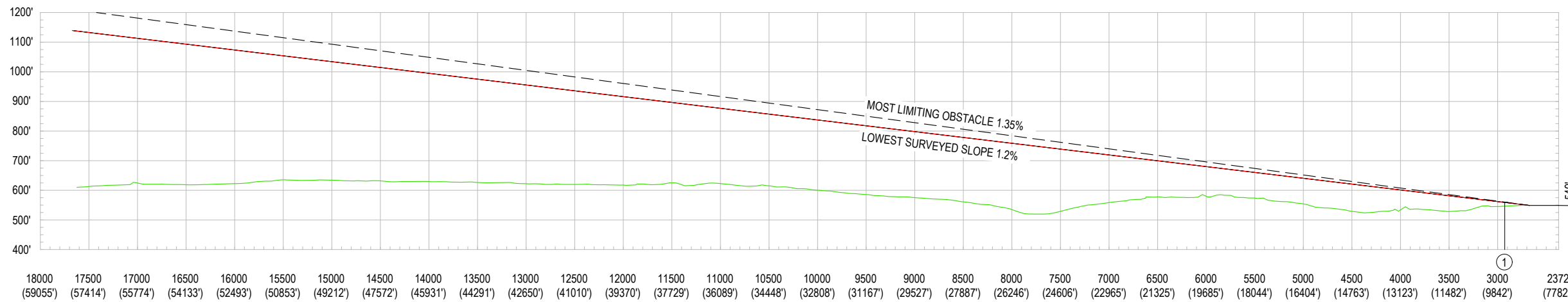
NOTES

- AZIMUTH AND COORDINATES FOR THIS SURVEY ARE BASED ON MGA (GDA2020) ZONE 53 THE VERTICAL DATUM BEING AHD.
- HORIZONTAL DIMENSIONS IN METRES (FEET) ELEVATIONS IN FEET
- USERS OF THIS CHART SHOULD NOTIFY ANY ERRORS OR OMISSIONS AS SOON AS THEY BECOME APPARENT TO :-

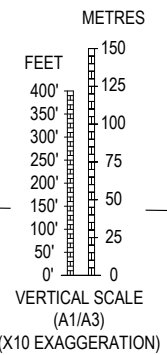
AERONAUTICAL INFORMATION SERVICE - AIR FORCE
EMAIL: AIS.AF@DEFENCE.GOV.AU
- FOR FURTHER INFORMATION REGARDING THIS CHART CONTACT THE ABOVE
- MAGNETIC VARIATION 6° 37' E (DECEMBER 2023)
- AERIAL SURVEY COMPLETED FEBRUARY 2016.
GROUND SURVEY CHECKS AND VERIFICATION SEPTEMBER 2023.

LEGEND

| OBSTRUCTIONS AND OBSTACLES | |
|----------------------------|---|
| ① | OBJECT NUMBER |
| 392' | TOP ELEVATION IN FEET |
| | TREE(S) OR VEGETATION |
| | BUILDING OR LARGE STRUCTURE |
| | POLE, TOWER, SPIRE ETC |
| | ANTENNA |
| | MOVING (ROADS, RAILWAY TRACKS ETC) |
| | TERRAIN PENETRATING LOWEST SURVEYED SLOPE |
| | OVERHEAD TRANSMISSION LINE |
| | FENCE LINE |

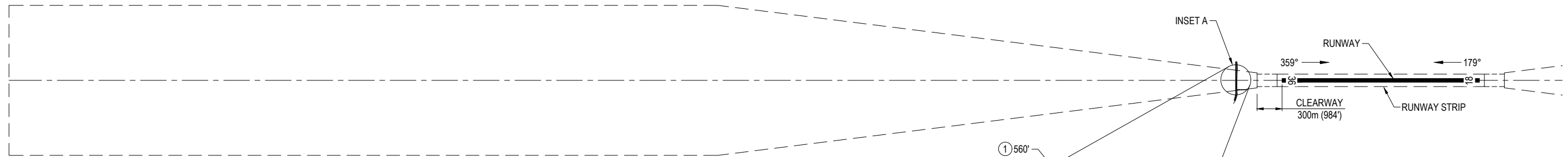


FOR RUNWAY DETAILS
SEE SHEET 3



RUNWAY 18

1:25000 (A1)
1:50000 (A3)
SCALE 1:25000



| | |
|----------------------|-----------------------------------|
| RUNWAY STRIP: | |
| - ERSA (28 NOV 24) | 2492m (8176') x 150m (492') |
| - MOS139 (2019) | 2492m (8176') x 280m (919') |
| RUNWAY: | 2372m (7782') x 45m (147') SEALED |

THE TYPE A SURVEY HAS BEEN CONDUCTED IN ACCORDANCE WITH ICAO ANNEX 4 AND DEPARTMENT OF DEFENCE REQUIREMENTS. THE CHART CLEARLY SHOWS THE GRAPHICAL RESULTS OF THE SURVEY AND HAS BEEN CHECKED FOR ACCURACY AND COMPLETENESS OF INFORMATION. THE CHART IS CERTIFIED CORRECT FOR PUBLICATION.

DANIEL GEEVES
REGISTERED SURVEYOR
aurecon

15/11/2024
DATE



KEY DIAGRAM

INSET A

1:4000 (A1)
1:8000 (A3)
SCALE 1:4000



www.aurecongroup.com



Australian Government
Department of Defence
Security and Estate Group

| REV | DATE | REVISION DETAILS | APPROVED |
|-----|----------|------------------------------|----------|
| A | 25.01.24 | FOR REVIEW | DG |
| B | 25.03.24 | FOR REVIEW | DG |
| C | 28.06.24 | FOR ISSUE | DG |
| D | 15.11.24 | FOR ISSUE - UPDATE RWS WIDTH | DG |

| | |
|----------|----------|
| SCALE | AS SHOWN |
| SIZE | A1/A3 |
| DRAWN | MH |
| SURVEYED | AD/AAM |
| CHECKED | GH |

| | |
|---------------|----------------------|
| FOR ISSUE | NOT FOR CONSTRUCTION |
| APPROVED | |
| DANIEL GEEVES | |
| DATE | 15/11/2024 |

| | | | | | | | | | | | | | |
|-------------|--|-------------|----------|-----|-----|------|----|------|-----|--------|-----|-----|---|
| PROJECT | OBSTACLE LIMITATION SURVEYS AND ASSESSMENT RAAF BASE WOOMERA | | | | | | | | | | | | |
| TITLE | AERODROME OBSTACLE CHART ICAO TYPE A (OPERATING LIMITATIONS) ISSUED NOVEMBER 2024 RUNWAY 18 - SHEET 1 OF 3 | | | | | | | | | | | | |
| DRAWING No. | 520002 | PROJECT No. | EST09759 | WBS | DRG | DISC | UU | SITE | WOM | NUMBER | 002 | REV | D |

| DECLARED DISTANCES FOR RUNWAY 36 | |
|---|---------------------|
| TAKE OFF RUN AVAILABLE (TORA) | 2372m (7782') |
| TAKE OFF DISTANCE AVAILABLE (TODA) | 2672m (8766') 1.01% |
| ACCELERATE STOP DISTANCE AVAILABLE (ASDA) | 2372m (7782') |
| LANDING DISTANCE AVAILABLE (LDA) | 2372m (7782') |
| SUPPLEMENTARY TAKE OFF DISTANCE AVAILABLE (STODA) | NIL |

| LEGEND | |
|--------|------------------------|
| | LOWEST SURVEYED SLOPE |
| | GROUND LEVEL |
| | MOST LIMITING OBSTACLE |
| | OBSTACLE |

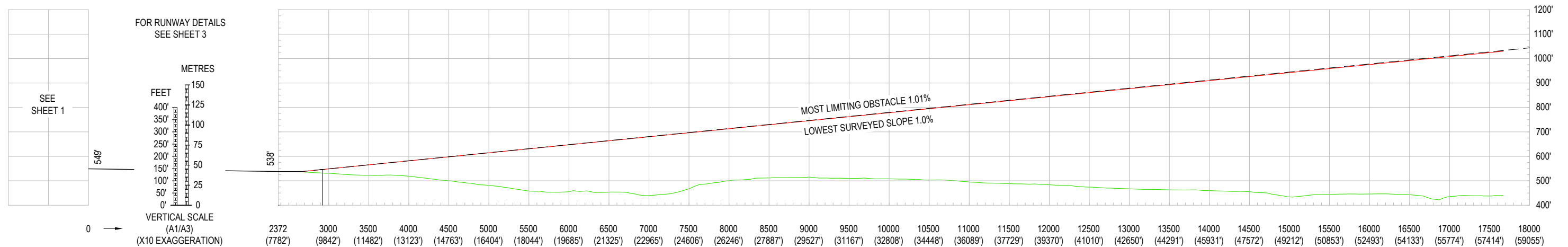
NOTES

- AZIMUTH AND COORDINATES FOR THIS SURVEY ARE BASED ON MGA (GDA2020) ZONE 53 THE VERTICAL DATUM BEING AHD.
- HORIZONTAL DIMENSIONS IN METRES (FEET) ELEVATIONS IN FEET
- USERS OF THIS CHART SHOULD NOTIFY ANY ERRORS OR OMISSIONS AS SOON AS THEY BECOME APPARENT TO :-

AERONAUTICAL INFORMATION SERVICE - AIR FORCE
EMAIL: AIS.AF@DEFENCE.GOV.AU
- FOR FURTHER INFORMATION REGARDING THIS CHART CONTACT THE ABOVE
- MAGNETIC VARIATION 6° 37' E (DECEMBER 2023)
- AERIAL SURVEY COMPLETED 13 FEBRUARY 2016.
GROUND SURVEY CHECKS AND VERIFICATION SEPTEMBER 2023.

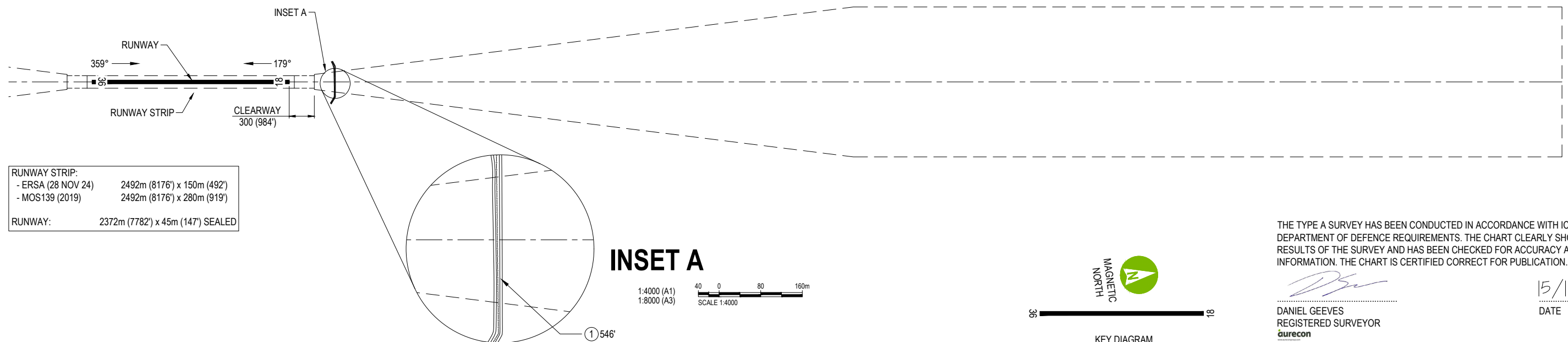
LEGEND

| OBSTRUCTIONS AND OBSTACLES | |
|----------------------------|---|
| | OBJECT NUMBER |
| 392 | TOP ELEVATION IN FEET |
| | TREE(S) OR VEGETATION |
| | BUILDING OR LARGE STRUCTURE |
| | POLE, TOWER, SPIRE ETC |
| | ANTENNA |
| | MOVING (ROADS, RAILWAY TRACKS ETC) |
| | TERRAIN PENETRATING LOWEST SURVEYED SLOPE |
| | OVERHEAD TRANSMISSION LINE |
| | FENCE LINE |



RUNWAY 36

1:25000 (A1)
1:50000 (A3)
SCALE 1:25000



RUNWAY STRIP:
- ERSA (28 NOV 24) 2492m (8176') x 150m (492')
- MOS139 (2019) 2492m (8176') x 280m (919')

RUNWAY: 2372m (7782') x 45m (147') SEALED

THE TYPE A SURVEY HAS BEEN CONDUCTED IN ACCORDANCE WITH ICAO ANNEX 4 AND DEPARTMENT OF DEFENCE REQUIREMENTS. THE CHART CLEARLY SHOWS THE GRAPHICAL RESULTS OF THE SURVEY AND HAS BEEN CHECKED FOR ACCURACY AND COMPLETENESS OF INFORMATION. THE CHART IS CERTIFIED CORRECT FOR PUBLICATION.

DANIEL GEEVES
REGISTERED SURVEYOR
aurecon
15/11/2024
DATE



www.aurecongroup.com



| REV | DATE | REVISION DETAILS | APPROVED |
|-----|----------|------------------------------|----------|
| A | 25.01.24 | FOR REVIEW | DG |
| B | 25.03.24 | FOR REVIEW | DG |
| C | 28.06.24 | FOR ISSUE | DG |
| D | 15.11.24 | FOR ISSUE - UPDATE RWS WIDTH | DG |

| SCALE | SIZE |
|-----------------|-------|
| AS SHOWN | A1/A3 |
| DRAWN | |
| MH | |
| SURVEYED | |
| AD/AAM | |
| CHECKED | |
| GH | |

| FOR ISSUE | APPROVED |
|----------------------|-----------------|
| NOT FOR CONSTRUCTION | |
| | DATE 15/11/2024 |
| | DANIEL GEEVES |

| PROJECT | TITLE | DRAWING No. | PROJECT No. | WBS | TYPE | DISC | SITE | NUMBER | REV |
|--|--|-------------|-------------|-----|------|------|------|--------|-----|
| OBSTACLE LIMITATION SURVEYS AND ASSESSMENT RAAF BASE WOOMERA | AERODROME OBSTACLE CHART ICAO TYPE A (OPERATING LIMITATIONS) ISSUED NOVEMBER 2024 RUNWAY 36 - SHEET 2 OF 3 | 520002 | EST09759 | DRG | UU | WOM | 003 | D | |

DEPARTMENT OF DEFENCE

SECURITY AND ESTATE GROUP

AERODROME OBSTACLE CHART - ICAO TYPE A
(OPERATING LIMITATIONS) NOVEMBER 2024, COMPILED BY AURECON

TO BE READ IN CONJUNCTION WITH CURRENT NOTAMS

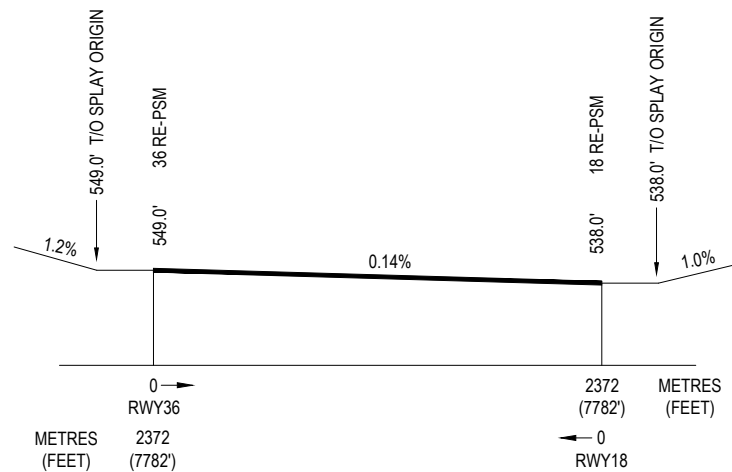
THE ORIGIN OF THE TAKE OFF SURFACE IS LOCATED AT THE END OF THE CLEARWAY.
DISTANCES COMMENCE FROM THE RAAF RE-PSM AT THE START OF THE TAKE-OFF RUNWAY (SOT)

DATUM

AZIMUTH AND COORDINATES FOR THIS SURVEY ARE BASED ON MGA (GDA2020) ZONE 53
THE VERTICAL DATUM BEING AHD.

DEFINITIONS

- RE-PSM: RUNWAY END PERMANENT SURVEY MARK
- LENGTH OF INNER EDGE 180m
- RATE OF DIVERGENCE OF SPLAY (EACH SIDE) 12.5%
- FINAL WIDTH 1800m
- OVERALL LENGTH 15000m



18/36 RWY LONGITUDINAL SECTION
NOT TO SCALE

18 TAKE OFF

| REPSM AT START OF TORA (REPSM 18) | | | | | | | | | | | | | | | | | | | | |
|-----------------------------------|-------|-------|---------|-------------|-------|-------|---------|-----------|------------|-----------|-------|-------------------------|-------|-------|------|------|------|------|--------------------------|-------|
| GEOGRAPHIC | | | | | | | | MGA | | ELEVATION | | RUNWAY MAGNETIC BEARING | | | TORA | | TODA | | ELEVATION AT T.O. ORIGIN | |
| LAT | | | | LONG | | | | EASTING | NORTHING | (m) | (Ft) | (DEG) | (MIN) | (SEC) | (m) | (Ft) | (m) | (Ft) | (m) | (Ft) |
| DECIMAL DEG | (DEG) | (MIN) | (SEC) | DECIMAL DEG | (DEG) | (MIN) | (SEC) | | | | | | | | | | | | | |
| -31.1351033 | -31° | 08' | 06.372" | 136.8138795 | 136° | 48' | 49.966" | 672932.86 | 6554009.39 | 164.0 | 538.0 | 179° | 12' | 16" | 2372 | 7782 | 2672 | 8766 | 167.3 | 549.0 |

| OBJECTS THAT APPEAR ON THE CHART | | | | | | | | | | | | | | | | | | | |
|----------------------------------|-------------|-------|-------|--------|-------------|-------|-------|--------|-----------|------------|---------------|-------|------------------|-------------------|--------|--------|-------|-----------------|------|
| REF No | GEOGRAPHIC | | | | | | | | MGA | | ELEVATION TOP | | TYPE OF OBSTACLE | DISTANCE FROM SOT | | OFFSET | | GRADIENT TO TOP | |
| | DECIMAL DEG | (DEG) | (MIN) | (SEC) | DECIMAL DEG | (DEG) | (MIN) | (SEC) | EASTING | NORTHING | (m) | (Ft) | | (m) | (Ft) | (m) | (Ft) | LEFT/RIGHT | % |
| 1 | -31.161268 | -31° | 09' | 40.56" | 136.809667 | 136° | 48' | 34.80" | 672483.81 | 6551115.47 | 170.7 | 560.2 | MOVING | 2926.7 | 9602.2 | 105.6 | 346.5 | R | 1.35 |

36 TAKE OFF

| REPSM AT START OF TORA (REPSM 36) | | | | | | | | | | | | | | | | | | | | |
|-----------------------------------|-------|-------|---------|-------------|-------|-------|---------|-----------|------------|-----------|-------|-------------------------|-------|-------|------|------|------|------|--------------------------|-------|
| GEOGRAPHIC | | | | | | | | MGA | | ELEVATION | | RUNWAY MAGNETIC BEARING | | | TORA | | TODA | | ELEVATION AT T.O. ORIGIN | |
| LAT | | | | LONG | | | | EASTING | NORTHING | (m) | (Ft) | (DEG) | (MIN) | (SEC) | (m) | (Ft) | (m) | (Ft) | (m) | (Ft) |
| DECIMAL DEG | (DEG) | (MIN) | (SEC) | DECIMAL DEG | (DEG) | (MIN) | (SEC) | | | | | | | | | | | | | |
| -31.1563882 | -31° | 09' | 22.998" | 136.8113589 | 136° | 48' | 40.892" | 672653.92 | 6551653.82 | 167.3 | 549.0 | 359° | 12' | 16" | 2372 | 7782 | 2672 | 8766 | 164.0 | 538.0 |

| OBJECTS THAT APPEAR ON THE CHART | | | | | | | | | | | | | | | | | | | |
|----------------------------------|-------------|-------|-------|--------|-------------|-------|-------|--------|-----------|------------|---------------|-------|------------------|-------------------|--------|--------|-------|-----------------|------|
| REF No | GEOGRAPHIC | | | | | | | | MGA | | ELEVATION TOP | | TYPE OF OBSTACLE | DISTANCE FROM SOT | | OFFSET | | GRADIENT TO TOP | |
| | DECIMAL DEG | (DEG) | (MIN) | (SEC) | DECIMAL DEG | (DEG) | (MIN) | (SEC) | EASTING | NORTHING | (m) | (Ft) | | (m) | (Ft) | (m) | (Ft) | LEFT/RIGHT | % |
| 1 | -31.130221 | -31° | 07' | 48.79" | 136.815245 | 136° | 48' | 54.88" | 673071.93 | 6554548.52 | 166.5 | 546.3 | MOVING | 2923.9 | 9592.7 | 74.7 | 245.1 | R | 1.01 |

THE TYPE A SURVEY HAS BEEN CONDUCTED IN ACCORDANCE WITH ICAO ANNEX 4 AND DEPARTMENT OF DEFENCE REQUIREMENTS. THE CHART CLEARLY SHOWS THE GRAPHICAL RESULTS OF THE SURVEY AND HAS BEEN CHECKED FOR ACCURACY AND COMPLETENESS OF INFORMATION. THE CHART IS CERTIFIED CORRECT FOR PUBLICATION.

[Signature]
DANIEL GEEVES
REGISTERED SURVEYOR
aurecon

15/11/2024
DATE



www.aurecongroup.com



| REV | DATE | REVISION DETAILS | APPROVED | SCALE | SIZE | FOR ISSUE | PROJECT | OBSTACLE LIMITATION SURVEYS AND ASSESSMENT |
|-----|----------|------------------------------|----------|----------|-------|----------------------|--|--|
| A | 25.01.24 | FOR REVIEW | DG | AS SHOWN | A1/A3 | NOT FOR CONSTRUCTION | OBSTACLE LIMITATION SURVEYS AND ASSESSMENT | RAAF BASE WOOMERA |
| B | 25.03.24 | FOR REVIEW | DG | | | | | |
| C | 28.06.24 | FOR ISSUE | DG | DRAWN | | APPROVED | | |
| D | 15.11.24 | FOR ISSUE - UPDATE RWS WIDTH | DG | MH | | | | |
| | | | | SURVEYED | | | | |
| | | | | AD/AAM | | | | |
| | | | | CHECKED | | | | |
| | | | | GH | | | | |

| TITLE | DRAWING No. | PROJECT No. | WBS | TYPE | DISC | SITE | NUMBER | REV |
|---|-------------|-------------|-----|------|------|------|--------|-----|
| AERODROME OBSTACLE CHART ICAO TYPE A (OPERATING LIMITATIONS) ISSUED NOVEMBER 2024 RUNWAY 18/36 - SHEET 3 OF 3 | 520002 | EST09759 | DRG | UU | WOM | 004 | D | |