

**CANBERRA AIRPORT, AUSTRALIA**  
**RUNWAY 17**

ICAO ANNEX 4 TYPE A (OPERATING LIMITATIONS) CHART  
SHEET 1 of 4

For aerodrome and obstruction data refer to Sheet 4  
**TO BE READ IN CONJUNCTION WITH CURRENT NOTAMS**

LEGEND	
<b>OBSTRUCTIONS &amp; OBSTACLES</b>	
Identification number	⑤
Top elevation in feet	431ft
Treel(s) or shrub(s)	✱
Building or large structure	□
Pole, tower, spire, etc.	○
Moving vehicle	—
Antenna	△
Terrain protruding lowest surveyed slope	▲
<b>GEOGRAPHICAL FEATURES</b>	
Transmission line(s) or overhead cable line(s)	—
fence line	—
Railway line(s)	—
Airport boundary	—
River, creek	—
Major roads, minor roads, tracks	—

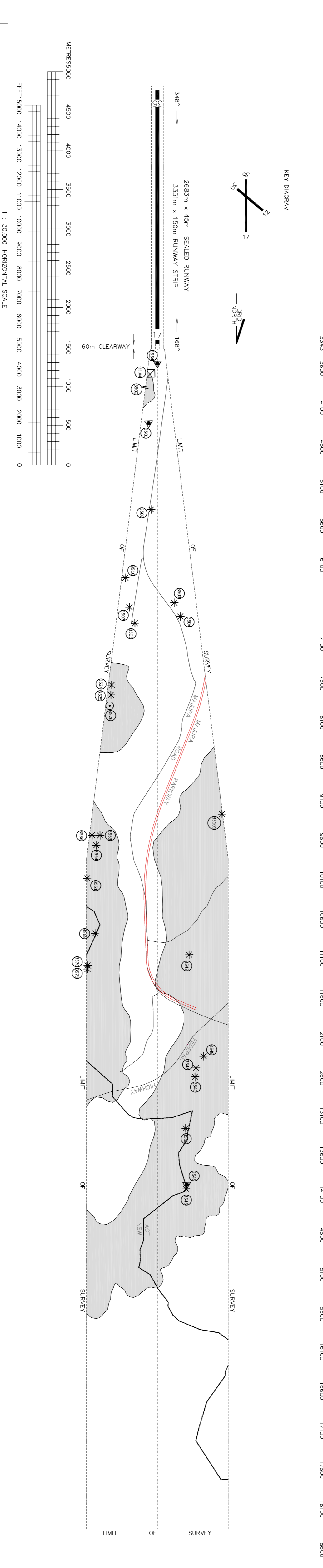
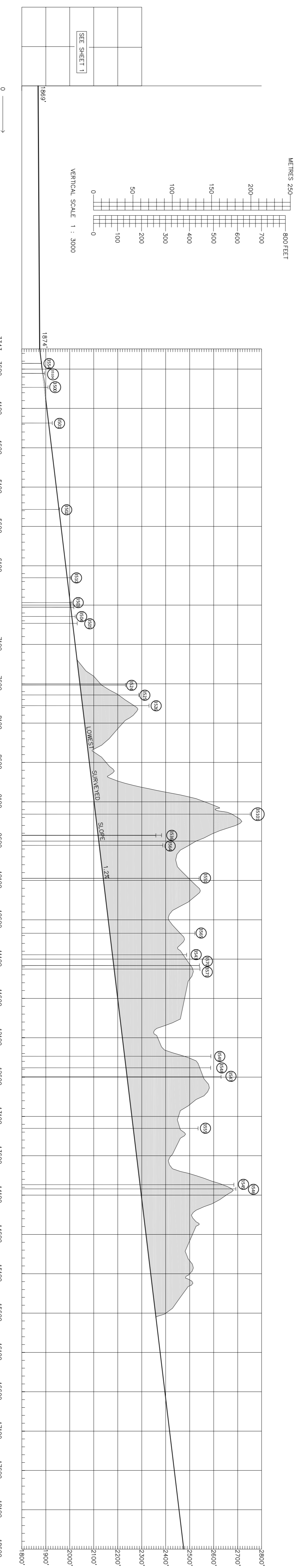
**DECLARED DISTANCES FOR RWY 17**  
 TAKE-OFF RUN AVAILABLE (TORA) 2983  
 ACCELERATE-STOP DISTANCE AVAILABLE (ASDA) 3073  
 LANDING DISTANCE AVAILABLE (LDA) 2983

**DATUMS**  
 VERTICAL: AUSTRALIAN HEIGHT DATUM (AHD)  
 HORIZONTAL: MAP GRID OF AUSTRALIA ZONE 55 (MGA 94)  
 SOURCE: SOURCE INFORMATION

DIGITAL TOPOGRAPHY: CAPITAL AIRPORT GROUP



REV.	DATE	DESCRIPTION
10	JAN 2022	REV. 1:10N SURVEYS, PER 1:10N SURVEYS AND PER 1:10N SURVEYS
9	FEB 2019	ADDITIONAL OBSTRUCTIONS IDENTIFIED
8	MAR 2017	TYRUK 17113 LOCATION AND HT CHANGE
6	MAR 2015	COMPLETION OF CONSTRUCTION
4	FEB 2010	CLEARWAY LENGTH CHANGED
3	OCT 2008	RUNWAY LENGTH CHANGED
2	OCT 2007	HORIZONTAL SCALE BAR AMENDED
1	OCT 2005	INITIAL SURVEY



CANBERRA AIRPORT AUSTRALIA  
RUNWAY 35

ICAO ANNEX 4 TYPE A (OPERATING LIMITATIONS) CHART

SHEET 2 of 4

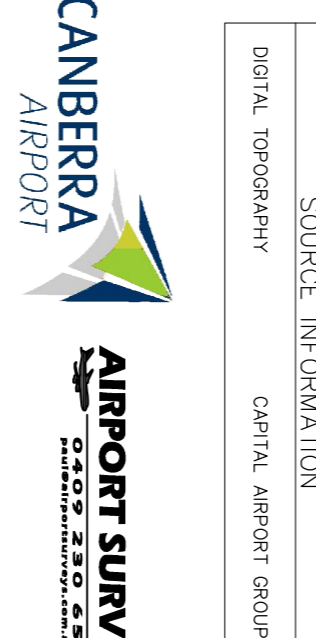
For aerodrome and obstruction data refer to Sheet 4

TO BE READ IN CONJUNCTION WITH CURRENT NOTAMS

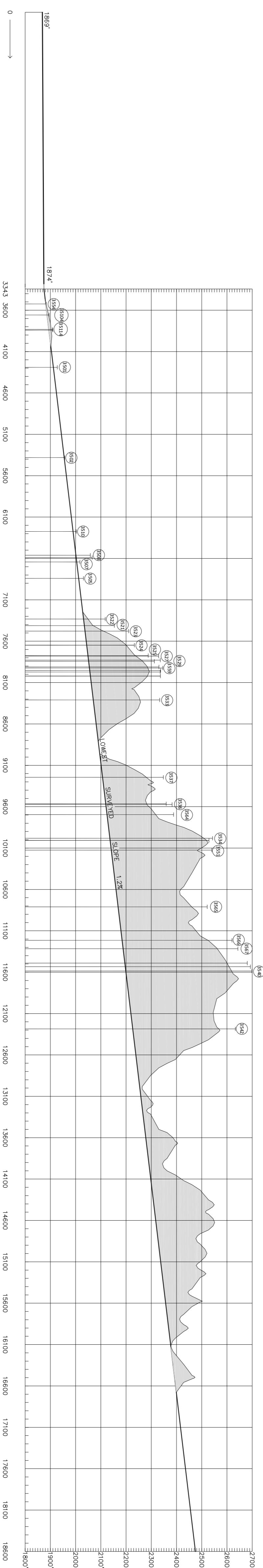
LEGEND	
<b>OBSTRUCTIONS &amp; OBSTACLES</b>	
Identification number	④
Top elevation in feet	491ft
Tower(s) or stn(s)	*
Building or large structure	□
Pole, tower, spire, etc.	○
Moving Vehicle	△
Antenna	▲
Terrain penetrating lowest surveyed slope	▭
<b>GEOMETRICAL FEATURES</b>	
Transmission line(s) or overhead cable line(s)	—
fence line	—
Railway line(s)	—
Airport boundary	—
River, creek	—
Major roads, minor roads, tracks	—

DECLARED DISTANCES FOR RWY 35	
TAKE-OFF RUN AVAILABLE (TORA)	3283
ACCELERATE STOP DISTANCE AVAILABLE (ASDA)	3343
LANDING DISTANCE AVAILABLE (LDA)	2883

DATUMS	
VERTICAL	AUSTRALIAN HEIGHT DATUM (AHD)
HORIZONTAL	WGS 84 AUSTRALIAN ZONE 55 (GDA 94)
VERTICAL DISTANCES ARE IN METRES	
HORIZONTAL DISTANCES ARE IN FEET	
SOURCE INFORMATION	
DIGITAL TOPOGRAPHY	CAPITAL AIRPORT GROUP



REV	DATE	BY	DESCRIPTION
01	2004	1	ASDA
02	2004	2	ASDA
03	2004	3	ASDA
04	2004	4	ASDA
05	2004	5	ASDA
06	2004	6	ASDA
07	2004	7	ASDA
08	2004	8	ASDA
09	2004	9	ASDA
10	2004	10	ASDA
11	2004	11	ASDA
12	2004	12	ASDA
13	2004	13	ASDA
14	2004	14	ASDA
15	2004	15	ASDA
16	2004	16	ASDA
17	2004	17	ASDA
18	2004	18	ASDA
19	2004	19	ASDA
20	2004	20	ASDA
21	2004	21	ASDA
22	2004	22	ASDA
23	2004	23	ASDA
24	2004	24	ASDA
25	2004	25	ASDA
26	2004	26	ASDA
27	2004	27	ASDA
28	2004	28	ASDA
29	2004	29	ASDA
30	2004	30	ASDA
31	2004	31	ASDA
32	2004	32	ASDA
33	2004	33	ASDA
34	2004	34	ASDA
35	2004	35	ASDA
36	2004	36	ASDA
37	2004	37	ASDA
38	2004	38	ASDA
39	2004	39	ASDA
40	2004	40	ASDA
41	2004	41	ASDA
42	2004	42	ASDA
43	2004	43	ASDA
44	2004	44	ASDA
45	2004	45	ASDA
46	2004	46	ASDA
47	2004	47	ASDA
48	2004	48	ASDA
49	2004	49	ASDA
50	2004	50	ASDA
51	2004	51	ASDA
52	2004	52	ASDA
53	2004	53	ASDA
54	2004	54	ASDA
55	2004	55	ASDA
56	2004	56	ASDA
57	2004	57	ASDA
58	2004	58	ASDA
59	2004	59	ASDA
60	2004	60	ASDA
61	2004	61	ASDA
62	2004	62	ASDA
63	2004	63	ASDA
64	2004	64	ASDA
65	2004	65	ASDA
66	2004	66	ASDA
67	2004	67	ASDA
68	2004	68	ASDA
69	2004	69	ASDA
70	2004	70	ASDA
71	2004	71	ASDA
72	2004	72	ASDA
73	2004	73	ASDA
74	2004	74	ASDA
75	2004	75	ASDA
76	2004	76	ASDA
77	2004	77	ASDA
78	2004	78	ASDA
79	2004	79	ASDA
80	2004	80	ASDA
81	2004	81	ASDA
82	2004	82	ASDA
83	2004	83	ASDA
84	2004	84	ASDA
85	2004	85	ASDA
86	2004	86	ASDA
87	2004	87	ASDA
88	2004	88	ASDA
89	2004	89	ASDA
90	2004	90	ASDA
91	2004	91	ASDA
92	2004	92	ASDA
93	2004	93	ASDA
94	2004	94	ASDA
95	2004	95	ASDA
96	2004	96	ASDA
97	2004	97	ASDA
98	2004	98	ASDA
99	2004	99	ASDA
100	2004	100	ASDA



**CANBERRA AIRPORT, AUSTRALIA**  
**RUNWAY 35 (5° OFFSET)**

ICAO ANNEX 4 TYPE A (OPERATING LIMITATIONS) CHART

SHEET 3 of 4

For aerodrome and obstruction data refer to Sheet 4

TO BE READ IN CONJUNCTION WITH CURRENT NOTAMS

LEGEND	
<b>DISTRIBUTIONS &amp; OBSTACLES</b>	
Identification number	⑤
Top elevation in feet	4519'
(Tree(s) or shrub(s))	*
Building or large structure	■
Pole, tower, spire, etc.	○
Moving Vehicle	▶
Airframe	▲
Terrain penetrating lowest surveyed slope	▭
<b>GEOSPATIAL FEATURES</b>	
Transmission line(s) or overhead cable line(s)	—
Fence line	—
Railway line(s)	—
Airport boundary	—
River, creek	—
Major road, minor road, track	—

**DECLARED DISTANCES FOR RWY 35**  
TAKE-OFF RUN AVAILABLE (TORA) 3283  
ACCELERATE-STOP DISTANCE AVAILABLE (ASDA) 3283  
LANDING DISTANCE AVAILABLE 2683

DATUMS	
VERTICAL	AUSTRALIAN HEIGHT DATUM (AHD)
HORIZONTAL	MAP GRID (MGA)
VERTICAL DISTANCES ARE IN FEET	
HORIZONTAL DISTANCES ARE IN METRES (MGS 59 (WGS 84))	
SOURCE INFORMATION	
DIGITAL TOPOGRAPHY	CANBERRA AIRPORT GROUP

CANBERRA AIRPORT		AIRPORT SURVEYS	
FEB 2021/JAN 2022	8	1	1
MAR 2019/MAY 2019	7	1	1
MAR 2018/MAY 2018	6	1	1
OCT 2008/NOV 2008	5	1	1
OCT 2007/NOV 2007	4	1	1
OCT 2006/NOV 2006	3	1	1
OCT 2005/NOV 2005	2	1	1
OCT 2004/FEB 2004	1	1	1
SUBJECT	ASDA	ASDA	ASDA
AMENDMENT			

## SHEET 4 OF 4 - LIST OF OBSTRUCTIONS

**17 TAKE OFF END**

Obstacle ID	Description	Distance from TODA End	Distance from TODA Start	Offset from RWY C/L	Elevation (m)	Elevation (ft)	MGA94 Zone 55		Gradient
							Easting	Northing	
17104	Fence	265.4	3338.4	-121.2 L	572.6	1879	699599.8	6089178.2	1.25%
17106	Light pole	275.0	3348.0	-112.8 L	574.1	1883	699591.2	6089168.8	1.75%
17107	Road - 4.5m Transient Obstacle	277.3	3350.3	-124.6 L	574.8	1886	699602.9	6089166.3	1.99%
1747	Tree	368.7	3441.7	-51.5 L	573.8	1883	699527.8	6089076.5	1.23%
1746	Tree	490.0	3563.0	-132.0 L	577.1	1893	699605.6	6088953.5	1.59%
1741	Tree	598.6	3671.6	-115.8 L	582.4	1911	699587.0	6088845.2	2.19%
1705	Tree	618.9	3691.9	-108.9 L	582.1	1910	699579.7	6088825.1	2.08%
1742	Tree	633.2	3706.2	-127.1 L	583.6	1915	699597.5	6088810.4	2.26%
1708	Tree	728.7	3801.7	0.9 R	581.9	1909	699467.5	6088717.7	1.73%
17111	Tree	832.0	3905.0	130.8 R	584.0	1916	699335.3	6088617.3	1.77%
1707	Tree	940.0	4013.0	-112.8 L	585.2	1920	699576.4	6088504.0	1.69%
17103	Tree	1500.4	4573.4	-234.7 L	595.2	1953	699686.0	6087941.0	1.73%
17105	Tree	1520.9	4593.9	-82.4 L	594.3	1950	699533.2	6087923.9	1.65%
1743	Tree	1547.9	4620.9	-61.8 L	594.2	1949	699512.1	6087897.4	1.61%
1744	Tree	1651.3	4724.3	-16.6 L	592.5	1944	699464.6	6087795.0	1.41%
1710	Tree	2116.6	5189.6	-116.2 L	598.9	1965	699553.9	6087327.6	1.40%
1751	Tree	2168.2	5241.2	-350.4 L	604.5	1983	699786.8	6087270.8	1.62%
1723	Tree	3351.8	6424.8	-397.4 L	611.9	2008	699807.7	6086086.4	1.27%
1724	Tree	6657.9	9730.9	-827.3 L	670.1	2198	700164.4	6082771.7	1.51%
1725	Tree	6668.0	9741.0	-859.2 L	673.9	2211	700196.1	6082760.9	1.57%
1726	Tree	6671.8	9744.8	-900.0 L	679.6	2230	700239.0	6082756.2	1.65%
1728	Tree	8786.0	11859.0	-685.3 L	722.7	2371	699975.4	6080647.2	1.75%
1729	Tree	8835.2	11908.2	-734.7 L	724.0	2375	700023.7	6080597.0	1.75%
1731	Tree	9883.6	12956.6	-872.3 L	774.6	2541	700138.1	6079545.7	2.08%
1740	Tree	9984.6	13057.6	-880.6 L	778.9	2555	700144.2	6079444.6	2.10%
1733	Tree	10136.6	13209.6	-772.0 L	773.5	2538	700032.2	6079295.1	2.01%
1732	Tree	10158.4	13231.4	-738.2 L	773.2	2537	699998.0	6079274.0	2.01%
1739	Tree	10778.4	13851.4	-858.2 L	799.9	2624	700104.3	6078651.6	2.14%
1736	Tree	13896.9	16969.9	-897.8 L	849.5	2787	700074.9	6075532.9	2.02%

**35 TAKE OFF END**

Obstacle ID	Description	Distance from TODA End	Distance from TODA Start	Offset from RWY C/L	Elevation (m)	Elevation (ft)	MGA94 Zone 55		Gradient
							Easting	Northing	
3554	Near Field Monitor Aerial	184.1	3527.1	0.0 R	574.0	1883	699557.7	6092762.1	1.51%
35104	Aerial on LLZ building	311.1	3654.1	81.5 R	577.6	1895	699642.0	6092887.4	2.02%
3500	Road - 4.5m Transient Obstacle	489.5	3832.5	150.0 R	582.1	1910	699686.4	6093518.2	2.21%
3501	DVOR Lightning Rod	942.8	4285.8	111.9 R	587.4	1927	699686.4	6093518.2	1.71%
3502	Tree	2041.0	5384.0	78.5 R	596.5	1957	699677.3	6094616.9	1.23%
3510	Tree	2908.4	6251.4	408.4 R	610.6	2003	700026.2	6095476.8	1.35%
3503	Tree	3225.8	6568.8	-214.2 L	612.2	2009	699410.8	6095807.8	1.27%
3507	Tree	3283.3	6626.3	354.1 R	614.7	2017	699980.3	6095852.8	1.32%
3504	Tree	3401.1	6744.1	-292.9 L	616.5	2023	699336.1	6095984.8	1.33%
3505	Tree	3488.2	6831.2	285.9 R	619.1	2031	699916.6	6096059.2	1.37%
3524	Tree	4272.5	7615.5	580.7 R	680.5	2232	700228.6	6096836.7	2.56%
3525	Tree	4398.6	7741.6	591.1 R	697.3	2288	700241.9	6096962.5	2.87%
3526	Hazard Beacon	4534.9	7877.9	606.8 R	710.3	2330	700260.5	6097098.5	3.07%
35101	Tree	5914.2	9257.2	-821.6 L	839.0	2753	698863.0	6098509.0	4.53%
3536	Tree	6182.9	9525.9	831.5 R	726.2	2382	700521.6	6098741.1	2.51%
3563	Tree	6184.5	9527.5	728.2 R	719.0	2359	700418.3	6098745.0	2.39%
3564	Tree	6310.6	9653.6	777.6 R	727.9	2388	700470.6	6098870.0	2.48%
3551	Tree	6729.8	10072.8	892.4 R	774.1	2540	700594.6	6099286.6	3.01%
3565	Tree	7428.8	10771.8	790.6 R	768.6	2522	700508.2	6099987.6	2.66%
3543	Tree	7701.6	11044.6	-403.0 L	758.2	2488	699321.0	6100286.7	2.43%
3570	Tree	7838.4	11181.4	887.9 R	774.4	2541	700614.6	6100395.0	2.59%
3571	Tree	7883.1	11226.1	888.4 R	775.1	2543	700616.0	6100439.6	2.59%
3567	Tree	7919.9	11262.9	980.5 R	805.6	2643	700708.9	6100474.4	2.96%
3549	Tree	8991.9	12334.9	-588.2 L	788.9	2588	699164.4	6101580.8	2.42%
3548	Tree	9138.6	12481.6	-491.4 L	788.7	2588	699264.4	6101725.3	2.38%



3547	Tree	9252.1	12595.1	-479.0	L	801.9	2631	699279.3	6101838.6	2.49%
3555	Tree	9908.5	13251.5	-359.7	L	772.7	2535	699413.0	6102492.1	2.03%
3545	Old Joe Trig Beacon	10624.3	13967.3	-372.6	L	818.2	2684	699416.0	6103208.1	2.32%
3546	Tree	10677.3	14020.3	-363.7	L	820.7	2692	699426.1	6103260.8	2.34%

**CANBERRA AIRPORT - AUSTRALIA, TYPE A CHART, DECEMBER 2021**



**SHEET 4 OF 4 - LIST OF OBSTRUCTIONS**

**35 TAKE OFF END, 5° ROTATED EAST**

Obstacle ID	Description	Distance from TODA End	Distance from TODA Start	Offset from RWY C/L	Elevation (m)	Elevation (ft)	MGA94 Zone 55		Gradient	
							Easting	Northing		
3554	Near Field Monitor Aerial	183.4	3526.4	-16.1	L	574.0	1883	699557.7	6092762.1	1.51%
35104	Aerial on LLZ building	317.1	3660.1	54.1	R	577.6	1895	699642.0	6092887.4	1.98%
35114	Gate Post	490.8	3833.8	148.7	R	581.6	1908	699755.1	6093048.7	2.11%
3500	Road - 4.5m Transient Obstacle	501.1	3844.1	106.7	R	582.1	1910	699686.4	6093518.2	2.16%
3501	DVOR Lightning Rod	949.0	4292.0	29.3	R	587.4	1927	699686.4	6093518.2	1.70%
3502	Tree	2040.1	5383.1	-99.7	L	596.5	1957	699677.3	6094616.9	1.24%
3510	Tree	2932.9	6275.9	153.3	R	610.6	2003	700026.2	6095476.8	1.34%
3508	Tree	3220.2	6563.2	360.4	R	627.3	2058	700263.4	6095739.8	1.74%
3509	Tree	3248.3	6591.3	415.0	R	629.6	2066	700320.8	6095761.7	1.80%
3507	Tree	3301.7	6644.7	66.6	R	614.7	2017	699980.3	6095852.8	1.32%
3505	Tree	3499.9	6842.9	-19.2	L	619.1	2031	699916.6	6096059.2	1.37%
3522	Tree	3991.5	7334.5	403.2	R	645.4	2118	700390.1	6096501.7	1.86%
3521	Tree	4071.2	7414.2	519.5	R	656.4	2153	700514.5	6096568.2	2.09%
3523	Tree	4137.2	7480.2	599.4	R	673.6	2210	700601.0	6096625.2	2.47%
3524	Tree	4306.9	7649.9	206.1	R	680.5	2232	700228.6	6096836.7	2.54%
3525	Tree	4433.3	7776.3	205.5	R	697.3	2288	700241.9	6096962.5	2.84%
3527	Tree	4439.9	7782.9	502.2	R	709.9	2329	700537.5	6096936.6	3.12%
3529	Tree	4487.1	7830.1	520.0	R	711.9	2336	700560.3	6096981.7	3.13%
3530	Aerial on Building	4501.6	7844.6	514.8	R	704.7	2312	700556.8	6096996.7	2.96%
3526	Hazard Beacon	4570.5	7913.5	209.2	R	710.3	2330	700260.5	6097098.5	3.04%
3559	Tree	4582.8	7925.8	463.7	R	714.8	2345	700514.8	6097082.9	3.13%
3560	Tree	4612.8	7955.8	499.3	R	712.3	2337	700553.4	6097108.8	3.06%
3531	Tree	4631.0	7974.0	516.4	R	711.8	2335	700572.5	6097125.0	3.03%
3561	Tree	4680.2	8023.2	516.1	R	712.0	2336	700577.5	6097174.0	3.01%
3533	Tree	4968.9	8311.9	615.3	R	711.1	2333	700707.7	6097450.2	2.81%
3537	Tree	5904.3	9247.3	498.9	R	715.6	2348	700694.1	6098392.7	2.44%
3563	Tree	6224.5	9567.5	186.4	R	719.0	2359	700418.3	6098745.0	2.37%
3536	Tree	6231.8	9574.8	289.5	R	726.2	2382	700521.6	6098741.1	2.49%
3564	Tree	6354.4	9697.4	224.7	R	727.9	2388	700470.6	6098870.0	2.46%
3534	Tree	6640.0	9983.0	618.9	R	775.1	2543	700893.6	6099110.9	3.07%
3562	Tree	6666.6	10009.6	356.3	R	770.7	2528	700635.5	6099166.0	2.99%
3551	Tree	6782.0	10125.0	302.5	R	774.1	2540	700594.6	6099286.6	2.99%
3565	Tree	7469.5	10812.5	140.1	R	768.6	2522	700508.2	6099987.6	2.64%
3566	Tree	7873.4	11216.4	265.2	R	798.5	2620	700676.7	6100375.5	2.89%
3567	Tree	7975.2	11318.2	286.5	R	805.6	2643	700708.9	6100474.4	2.94%
3568	Tree	8149.9	11492.9	326.1	R	817.0	2680	700767.4	6100643.7	3.02%
3539	Tree	8193.1	11536.1	323.1	R	820.8	2693	700769.1	6100687.0	3.05%
3540	Tree	8244.9	11587.9	384.7	R	822.7	2699	700836.0	6100731.7	3.05%
3542	Communications Tower	8945.6	12288.6	555.0	R	802.6	2633	701081.8	6101409.6	2.59%