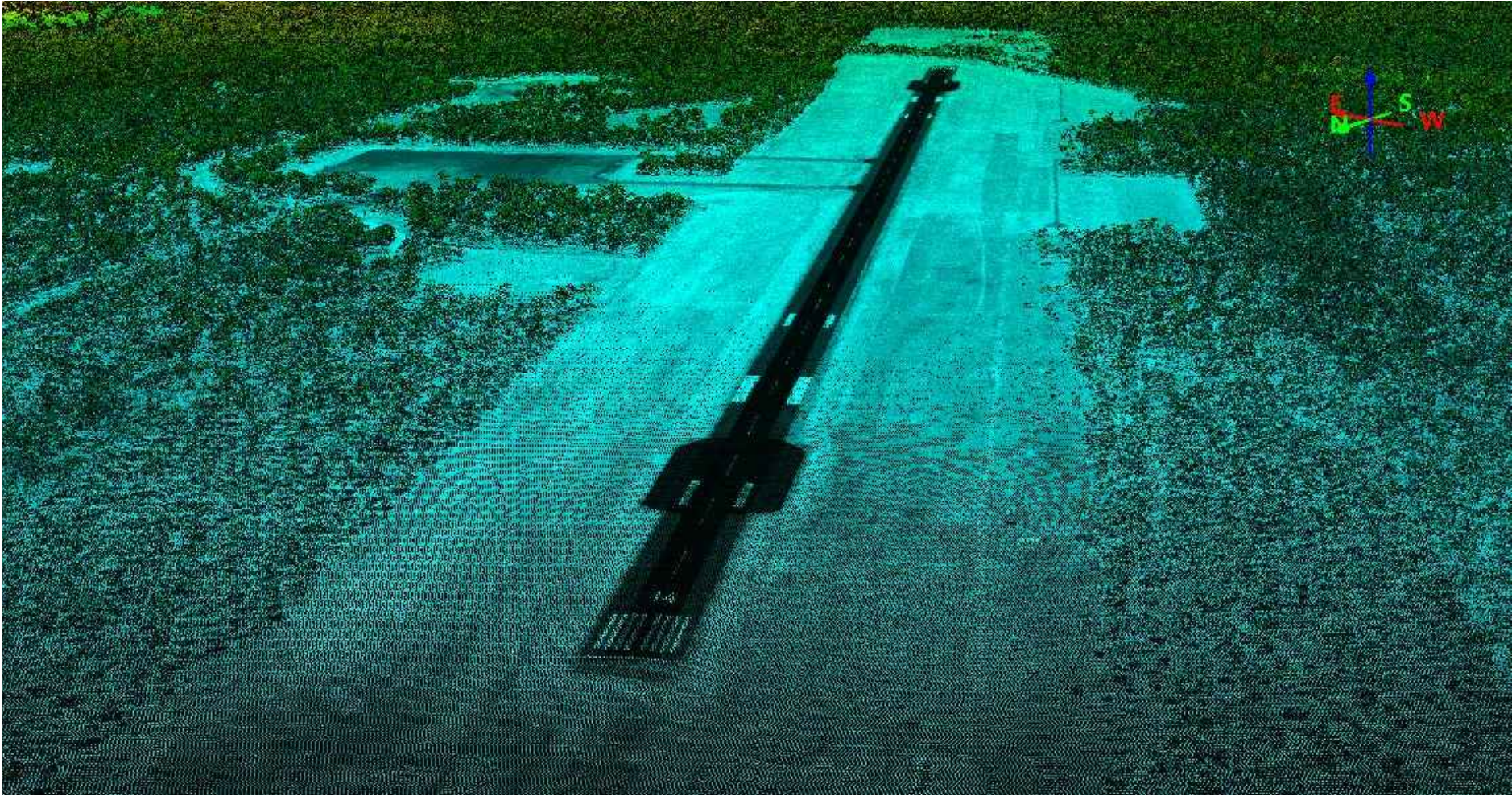


# OBSTACLE LIMITATION SURVEYS AND ASSESSMENT

WILLIAMSON AIRFIELD AERODROME OBSTACLE CHART ICAO TYPE A  
(OPERATING LIMITATIONS) ISSUED NOVEMBER 2019



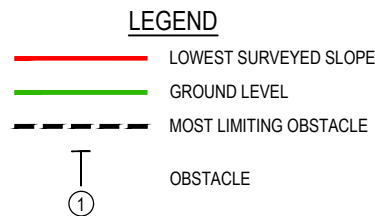
www.aurecongroup.com



Australian Government  
Department of Defence  
Estate and Infrastructure Group

REV	DATE	REVISION DETAILS	APPROVED	SCALE	SIZE	SIGNED FOR ISSUE	PROJECT
A	02.07.18	FINAL FOR REVIEW		AS SHOWN	A1/A3	NOT FOR CONSTRUCTION	OBSTACLE LIMITATION SURVEYS AND ASSESSMENT
B	11.10.19	SIGNED FOR ISSUE	GH				
C	15.11.19	SIGNED FOR ISSUE	GH				
				<b>DRAWN</b>		<b>APPROVED</b>	<b>TITLE</b>
				AM			WILLIAMSON AIRFIELD AERODROME OBSTACLE CHART ICAO TYPE A (OPERATING LIMITATIONS) ISSUED NOVEMBER 2019 COVER SHEET
				<b>SURVEYED</b>		DATE	
				DGG / AAM		15.11.19	
				<b>CHECKED</b>			<b>DRAWING No.</b>
				DGG			PROJECT No. 248842 - WBS D21016 - TYPE DRG - DISC CV - NUMBER 001 - REV C

DECLARED DISTANCES FOR RUNWAY 14	
TAKE OFF RUN AVAILABLE (TORA)	1800m (5905')
TAKE OFF DISTANCE AVAILABLE (TODA)	1860m (6102') 357.77%
ACCELERATE STOP DISTANCE AVAILABLE (ASDA)	1800m (5905')
LANDING DISTANCE AVAILABLE (LDA)	1800m (5905')
SUPPLEMENTARY TAKE OFF DISTANCE AVAILABLE (STODA)	823m (2700') 1.6%, 1189m (3900') 1.9%, 1264m (4146') 2.0%, 1387m (4550') 2.2%, 1497m (4911') 2.5%, 1630m (5347') 3.3%, 1757m (5764') 5.0%

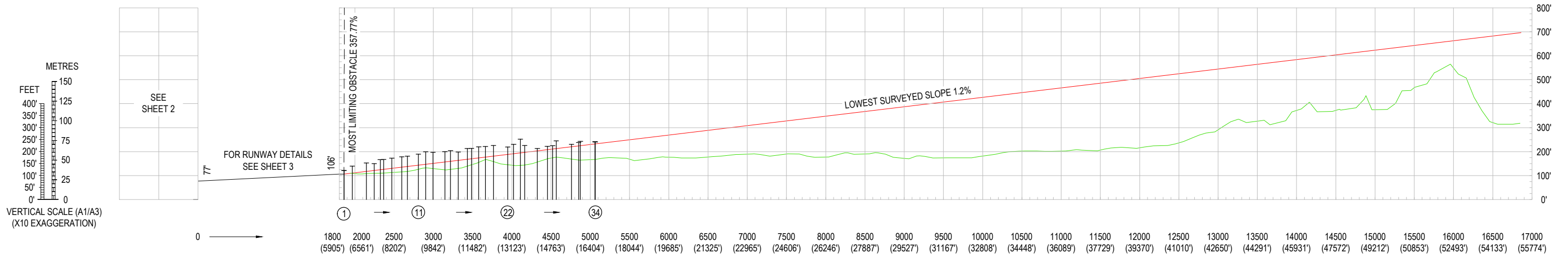


**NOTES**

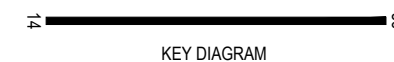
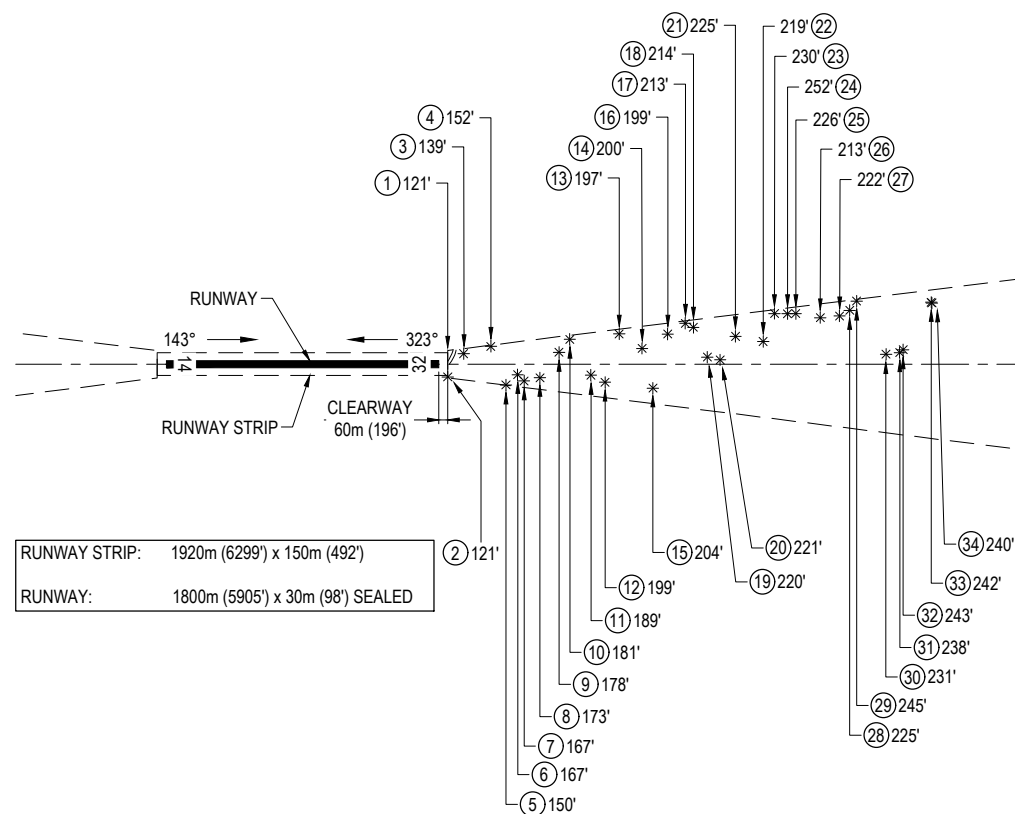
- AZIMUTH AND COORDINATES FOR THIS SURVEY ARE BASED ON MGA (GDA94) ZONE 56 THE VERTICAL DATUM BEING AHD.
- HORIZONTAL DIMENSIONS IN METRES (FEET) ELEVATIONS IN FEET
- USERS OF THIS CHART SHOULD NOTIFY ANY ERRORS OR OMISSIONS AS SOON AS THEY BECOME APPARENT TO : -  
  
PROJECT DIRECTOR  
NATIONAL AIRFIELD PROJECT  
BP26-1C-052  
DEPARTMENT OF DEFENCE  
CANBERRA ACT 2600  
TEL: (02) 6266 8081
- FOR FURTHER INFORMATION REGARDING THIS CHART CONTACT THE ABOVE
- MAGNETIC VARIATION 8°53' E (NOVEMBER 2019)
- AERIAL SURVEY COMPLETED 8 JUNE 2016.  
GROUND SURVEY CHECKS AND VERIFICATION 9-10 AUGUST 2017.
- RE-PSMs NEED TO BE AMENDED ON SITE ACCORDING TO THE POSITIONS SPECIFIED IN THE TABLES ON SHEETS 3 & 4.

**LEGEND**

- OBSTRUCTIONS AND OBSTACLES**
- ① OBSTACLE NUMBER
  - 392' TOP ELEVATION IN FEET
  - TREE(S) OR VEGETATION
  - BUILDING OR LARGE STRUCTURE
  - POLE, TOWER, SPIRE ETC
  - △ ANTENNA
  - MOVING (ROADS, RAILWAY TRACKS ETC)
  - TERRAIN PENETRATING LOWEST SURVEYED SLOPE
  - OVERHEAD TRANSMISSION LINE
  - FENCE LINE



**RUNWAY 14**



THE TYPE A SURVEY HAS BEEN CONDUCTED IN ACCORDANCE WITH ICAO ANNEX 4 AND DEPARTMENT OF DEFENCE REQUIREMENTS. THE CHART CLEARLY SHOWS THE GRAPHICAL RESULTS OF THE SURVEY AND HAS BEEN CHECKED FOR ACCURACY AND COMPLETENESS OF INFORMATION. THE CHART IS CERTIFIED CORRECT FOR PUBLICATION.

DANIEL GEEVES  
 REGISTERED SURVEYOR  
 aurecon

15/11/2019  
 DATE



**CLIENT**  
  
**Australian Government**  
 Department of Defence  
 Estate and Infrastructure Group

REV	DATE	REVISION DETAILS	APPROVED
A	02.07.18	FINAL FOR REVIEW	
B	11.10.19	SIGNED FOR ISSUE	GH
C	15.11.19	SIGNED FOR ISSUE	GH

SCALE	SIZE
AS SHOWN	A1/A3
<b>DRAWN</b>	
AM	
<b>SURVEYED</b>	
DGG / AAM	
<b>CHECKED</b>	
DGG	

**SIGNED FOR ISSUE**  
 NOT FOR CONSTRUCTION  
  
 GLENN HALLAHAN

PROJECT	TITLE	DRAWING No.	PROJECT No.	WBS	TYPE	DISC	NUMBER	REV
OBSTACLE LIMITATION SURVEYS AND ASSESSMENT	WILLIAMSON AIRFIELD AERODROME OBSTACLE CHART ICAO TYPE A (OPERATING LIMITATIONS) ISSUED NOVEMBER 2019 RUNWAY 14 - SHEET 1 OF 4	248842	D21016	DRG	CV	002	C	

DECLARED DISTANCES FOR RUNWAY 32	
TAKE OFF RUN AVAILABLE (TORA)	1800m (5905')
TAKE OFF DISTANCE AVAILABLE (TODA)	1860m (6102') 4.01%
ACCELERATE STOP DISTANCE AVAILABLE (ASDA)	1800m (5905')
LANDING DISTANCE AVAILABLE (LDA)	1800m (5905')
SUPPLEMENTARY TAKE OFF DISTANCE AVAILABLE (STODA)	1345m (4412') 1.6%, 1473m (4832') 1.9%, 1509m (4950') 2.0%, 1573m (5160') 2.2%, 1653m (5423') 2.5%, 1792m (5879') 3.3%

**LEGEND**

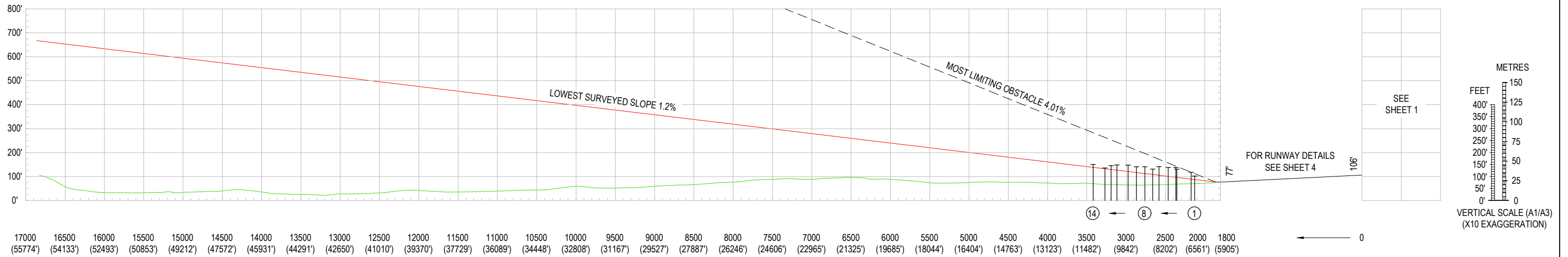
— LOWEST SURVEYED SLOPE  
— GROUND LEVEL  
- - - MOST LIMITING OBSTACLE  
① OBSTACLE

**NOTES**

- AZIMUTH AND COORDINATES FOR THIS SURVEY ARE BASED ON MGA (GDA94) ZONE 56 THE VERTICAL DATUM BEING AHD.
- HORIZONTAL DIMENSIONS IN METRES (FEET) ELEVATIONS IN FEET
- USERS OF THIS CHART SHOULD NOTIFY ANY ERRORS OR OMISSIONS AS SOON AS THEY BECOME APPARENT TO :-  
  
PROJECT DIRECTOR  
NATIONAL AIRFIELD PROJECT  
BP26-1C-052  
DEPARTMENT OF DEFENCE  
CANBERRA ACT 2600  
TEL: (02) 6266 8081
- FOR FURTHER INFORMATION REGARDING THIS CHART CONTACT THE ABOVE
- MAGNETIC VARIATION 8°53' E (NOVEMBER 2019)
- AERIAL SURVEY COMPLETED 8 JUNE 2016.  
GROUND SURVEY CHECKS AND VERIFICATION 9-10 AUGUST 2017.
- RE-PSMs NEED TO BE AMENDED ON SITE ACCORDING TO THE POSITIONS SPECIFIED IN THE TABLES ON SHEETS 3 & 4.

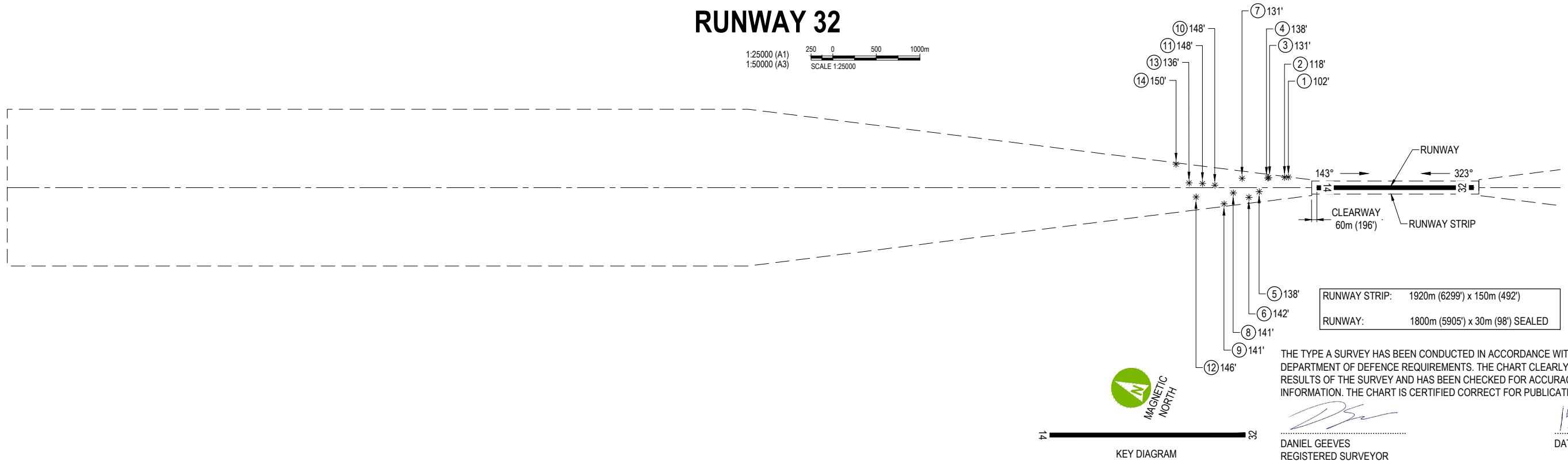
**LEGEND**

- OBSTRUCTIONS AND OBSTACLES**
- ① OBSTACLE NUMBER
  - 392' TOP ELEVATION IN FEET
  - TREE(S) OR VEGETATION
  - BUILDING OR LARGE STRUCTURE
  - POLE, TOWER, SPIRE ETC
  - △ ANTENNA
  - MOVING (ROADS, RAILWAY TRACKS ETC)
  - TERRAIN PENETRATING LOWEST SURVEYED SLOPE
  - OVERHEAD TRANSMISSION LINE
  - FENCE LINE



**RUNWAY 32**

1:25000 (A1)  
1:50000 (A3)  
SCALE 1:25000



THE TYPE A SURVEY HAS BEEN CONDUCTED IN ACCORDANCE WITH ICAO ANNEX 4 AND DEPARTMENT OF DEFENCE REQUIREMENTS. THE CHART CLEARLY SHOWS THE GRAPHICAL RESULTS OF THE SURVEY AND HAS BEEN CHECKED FOR ACCURACY AND COMPLETENESS OF INFORMATION. THE CHART IS CERTIFIED CORRECT FOR PUBLICATION.

DANIEL GEEVES  
REGISTERED SURVEYOR  
aurecon  
15/11/2019  
DATE

REV	DATE	REVISION DETAILS	APPROVED
A	02.07.18	FINAL FOR REVIEW	
B	11.10.19	SIGNED FOR ISSUE	GH
C	15.11.19	SIGNED FOR ISSUE	GH

SCALE	SIZE
AS SHOWN	A1/A3
<b>DRAWN</b>	
AM	
<b>SURVEYED</b>	
DGG / AAM	
<b>CHECKED</b>	
DGG	

SIGNED FOR ISSUE	DATE
NOT FOR CONSTRUCTION	15.11.19
<b>APPROVED</b>	
GLENN HALLAHAN	

PROJECT	TITLE	DRAWING No.	PROJECT No.	WBS	TYPE	DISC	NUMBER	REV
OBSTACLE LIMITATION SURVEYS AND ASSESSMENT	WILLIAMSON AIRFIELD AERODROME OBSTACLE CHART ICAO TYPE A (OPERATING LIMITATIONS) ISSUED NOVEMBER 2019 RUNWAY 32 - SHEET 2 OF 4	248842	D21016	DRG	CV	003	C	

DEPARTMENT OF DEFENCE

ESTATE AND INFRASTRUCTURE GROUP

AERODROME OBSTACLE CHART - ICAO TYPE A  
(OPERATING LIMITATIONS) NOVEMBER 2019, COMPILED BY AURECON

TO BE READ IN CONJUNCTION WITH CURRENT NOTAMS

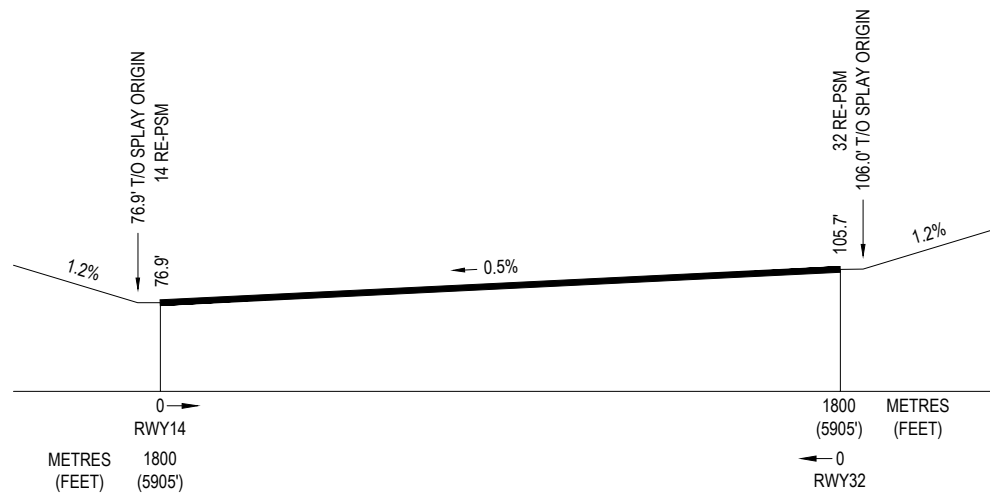
THE ORIGIN OF THE TAKE OFF SURFACE IS LOCATED AT THE END OF THE CLEARWAY.  
DISTANCES COMMENCE FROM THE RE-PSM AT THE START OF THE TAKE-OFF RUNWAY (SOT)

DATUM

AZIMUTH AND COORDINATES FOR THIS SURVEY ARE BASED ON MGA (GDA94) ZONE 56  
THE VERTICAL DATUM BEING AHD.

DEFINITIONS

- RE-PSM: RUNWAY END PERMANENT SURVEY MARK
- LENGTH OF INNER EDGE 180m
- RATE OF DIVERGENCE OF SPLAY (EACH SIDE) 12.5%
- FINAL WIDTH 1800m
- OVERALL LENGTH 15000m



IMPORTANT - RE-PSM NEEDS TO BE AMENDED ON SITE ACCORDING TO THE POSITION SPECIFIED IN THE TABLE BELOW.

14 TAKE OFF																			
RE - PSM AT START OF TORA										RUNWAY MAGNETIC BEARING			TORA		TODA		ELEVATION AT T.O. ORIGIN		
REF No	GEOGRAPHIC						MGA		ELEVATION		(DEG)	(MIN)	(SEC)	(m)	(FT)	(m)	(FT)	(m)	(FT)
	LAT			LONG			EASTING	NORTHING	(m)	(FT)									
	(DEG)	(MIN)	(SEC)	(DEG)	(MIN)	(SEC)													
	-22°	27'	59.84"	150°	10'	29.18"	209257.32	7512782.25	23.5	76.9	142°	34'	21"	1800	5905	1860	6102	32.3	106.0
OBJECTS THAT APPEAR ON THE CHART																			
REF No	GEOGRAPHIC						MGA		ELEVATION TOP		TYPE OF OBSTACLE	DISTANCE FROM SOT		OFFSET		GRADIENT TO TOP			
	LAT			LONG			EASTING	NORTHING	(m)	(FT)		(m)	(FT)	(m)	(FT)				
	(DEG)	(MIN)	(SEC)	(DEG)	(MIN)	(SEC)													
1	-22°	28'	52.90"	150°	11'	00.39"	210180.54	7511166.10	36.9	121.1	ROAD	1860.1	6102.6	3.9L	12.8L	357.77			
2	-22°	28'	54.27"	150°	10'	57.68"	210103.85	7511122.45	36.7	120.5	TREE	1860.1	6102.7	84.3R	276.6R	333.05			
3	-22°	28'	54.90"	150°	11'	04.17"	210289.92	7511106.72	42.5	139.3	TREE	1965.7	6449.0	69.6L	228.3L	9.50			
4	-22°	28'	59.28"	150°	11'	08.65"	210420.67	7510974.09	46.4	152.4	TREE	2145.5	7039.0	117.7L	386.1L	4.93			
5	-22°	29'	06.08"	150°	11'	02.49"	210248.46	7510761.63	45.7	149.9	TREE	2245.0	7365.5	136.9R	449.1R	3.47			
6	-22°	29'	07.23"	150°	11'	05.85"	210345.21	7510727.99	50.8	166.6	TREE	2322.0	7618.2	69.4R	227.8R	3.99			
7	-22°	29'	09.09"	150°	11'	05.31"	210330.89	7510670.58	51.0	167.2	TREE	2364.8	7758.6	110.2R	361.6R	3.69			
8	-22°	29'	11.76"	150°	11'	07.70"	210400.56	7510589.69	52.6	172.6	TREE	2469.5	8102.0	89.7R	294.1R	3.33			
9	-22°	29'	12.76"	150°	11'	14.98"	210609.50	7510562.72	54.3	178.0	TREE	2596.1	8517.5	78.6L	257.7L	2.98			
10	-22°	29'	13.45"	150°	11'	18.80"	210719.03	7510543.54	55.1	180.7	TREE	2666.9	8749.6	164.2L	538.8L	2.82			
11	-22°	29'	21.11"	150°	11'	13.88"	210582.79	7510305.23	57.6	189.1	TREE	2806.6	9208.1	71.8R	235.6R	2.67			
12	-22°	29'	24.51"	150°	11'	13.99"	210587.97	7510200.73	60.7	199.2	TREE	2900.0	9514.4	118.9R	390.2R	2.73			
13	-22°	29'	22.23"	150°	11'	25.35"	210911.32	7510276.86	60.1	197.0	TREE	2993.5	9821.3	199.6L	654.8L	2.45			
14	-22°	29'	28.03"	150°	11'	24.95"	210903.26	7510098.32	61.0	200.1	TREE	3144.7	10317.2	104.4L	342.5L	2.23			
15	-22°	29'	34.13"	150°	11'	18.09"	210710.77	7509906.74	62.2	203.9	TREE	3216.1	10551.3	157.4R	516.6R	2.20			
16	-22°	29'	31.40"	150°	11'	30.68"	211069.26	7509997.68	60.5	198.6	TREE	3314.1	10873.0	198.9L	652.6L	1.94			
17	-22°	29'	33.62"	150°	11'	34.81"	211188.44	7509931.64	64.8	212.6	TREE	3430.3	11254.4	269.8L	885.3L	2.07			
18	-22°	29'	35.56"	150°	11'	34.88"	211191.70	7509871.84	65.2	213.8	TREE	3483.9	11430.1	243.1L	797.7L	2.02			
19	-22°	29'	41.23"	150°	11'	30.38"	211066.39	7509694.83	67.0	219.9	TREE	3575.8	11731.6	46.8L	153.7L	2.02			
20	-22°	29'	43.94"	150°	11'	31.25"	211092.81	7509612.12	67.4	221.1	TREE	3660.7	12010.2	29.0L	95.0L	1.95			
21	-22°	29'	44.44"	150°	11'	37.71"	211277.75	7509600.03	68.6	225.2	TREE	3762.5	12344.3	183.7L	602.5L	1.91			
22	-22°	29'	50.19"	150°	11'	39.73"	211338.70	7509424.28	66.8	219.0	TREE	3945.3	12944.0	149.8L	491.5L	1.65			
23	-22°	29'	49.45"	150°	11'	46.65"	211536.32	7509450.82	70.1	230.0	TREE	4019.9	13188.6	334.6L	1097.8L	1.75			
24	-22°	29'	51.92"	150°	11'	48.05"	211577.67	7509375.46	76.7	251.6	TREE	4105.8	13470.4	333.3L	1093.5L	1.98			
25	-22°	29'	53.48"	150°	11'	48.99"	211605.43	7509327.89	68.8	225.6	TREE	4160.8	13651.0	333.9L	1095.6L	1.58			
26	-22°	29'	58.52"	150°	11'	50.86"	211661.90	7509173.89	65.0	213.2	TREE	4322.5	14181.4	306.9L	1007.0L	1.33			
27	-22°	30'	01.98"	150°	11'	53.34"	211734.81	7509068.74	67.6	221.8	TREE	4449.9	14599.3	318.3L	1044.4L	1.36			
28	-22°	30'	03.32"	150°	11'	55.61"	211800.48	7509028.64	68.6	224.9	TREE	4517.1	14820.0	355.6L	1166.6L	1.36			
29	-22°	30'	03.69"	150°	11'	58.25"	211876.25	7509018.79	74.6	244.7	TREE	4563.1	14970.8	416.6L	1366.6L	1.56			
30	-22°	30'	14.69"	150°	11'	50.73"	211667.39	7508676.02	70.3	230.6	TREE	4757.8	15609.4	65.8L	215.9L	1.31			
31	-22°	30'	17.09"	150°	11'	52.56"	211721.30	7508603.18	72.4	237.6	TREE	4847.7	15904.4	76.7L	251.5L	1.34			
32	-22°	30'	17.45"	150°	11'	53.52"	211748.76	7508592.79	74.0	242.8	TREE	4870.2	15978.5	95.4L	313.0L	1.38			
33	-22°	30'	17.88"	150°	12'	06.26"	212113.39	7508586.18	73.6	241.6	TREE	5056.1	16588.2	408.9L	1341.6L	1.29			
34	-22°	30'	18.09"	150°	12'	06.16"	212110.79	7508579.62	73.2	240.2	TREE	5060.5	16602.7	403.4L	1323.5L	1.28			

THE TYPE A SURVEY HAS BEEN CONDUCTED IN ACCORDANCE WITH ICAO ANNEX 4 AND DEPARTMENT OF DEFENCE REQUIREMENTS. THE CHART CLEARLY SHOWS THE GRAPHICAL RESULTS OF THE SURVEY AND HAS BEEN CHECKED FOR ACCURACY AND COMPLETENESS OF INFORMATION. THE CHART IS CERTIFIED CORRECT FOR PUBLICATION.

DANIEL GEEVES  
REGISTERED SURVEYOR  
aurecon

15/11/2019  
DATE



www.aurecongroup.com



REV	DATE	REVISION DETAILS	APPROVED	SCALE	SIZE	SIGNED FOR ISSUE	PROJECT
A	02.07.18	FINAL FOR REVIEW		AS SHOWN	A1/A3	NOT FOR CONSTRUCTION	OBSTACLE LIMITATION SURVEYS AND ASSESSMENT
B	11.10.19	SIGNED FOR ISSUE	GH				
C	15.11.19	SIGNED FOR ISSUE	GH				
				DRAWN		APPROVED	TITLE
				AM			WILLIAMSON AIRFIELD AERODROME OBSTACLE CHART ICAO TYPE A (OPERATING LIMITATIONS) ISSUED NOVEMBER 2019 RUNWAY 14 - SHEET 3 OF 4
				SURVEYED		DATE	
				DGG / AAM		15.11.19	
				CHECKED			DRAWING No.
				DGG		GLENN HALLAHAN	PROJECT No.
							WBS
							TYPE
							DISC
							NUMBER
							REV
							248842 - D21016 - DRG - CV - 004 - C

DEPARTMENT OF DEFENCE

ESTATE AND INFRASTRUCTURE GROUP

AERODROME OBSTACLE CHART - ICAO TYPE A  
(OPERATING LIMITATIONS) NOVEMBER 2019, COMPILED BY AURECON

TO BE READ IN CONJUNCTION WITH CURRENT NOTAMS

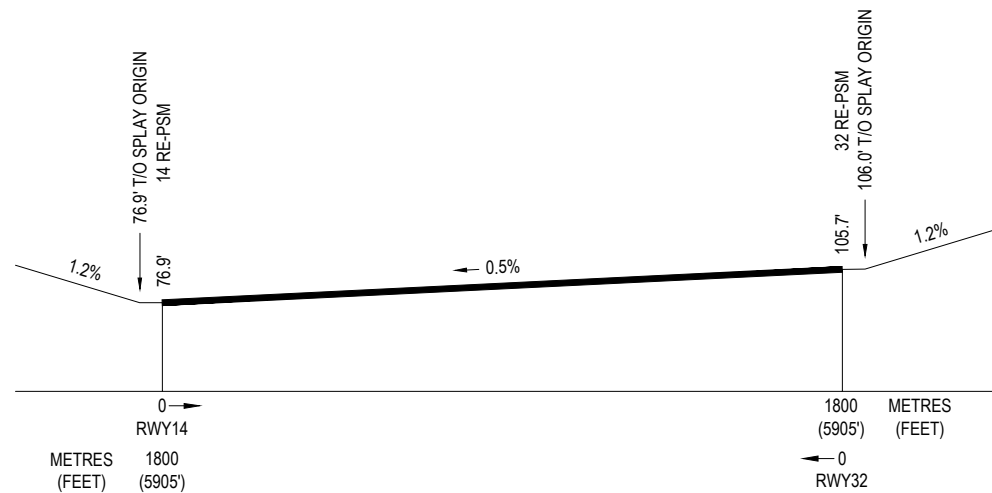
THE ORIGIN OF THE TAKE OFF SURFACE IS LOCATED AT THE END OF THE CLEARWAY.  
DISTANCES COMMENCE FROM THE RE-PSM AT THE START OF THE TAKE-OFF RUNWAY (SOT)

DATUM

AZIMUTH AND COORDINATES FOR THIS SURVEY ARE BASED ON MGA (GDA94) ZONE 56  
THE VERTICAL DATUM BEING AHD.

DEFINITIONS

- RE-PSM: RUNWAY END PERMANENT SURVEY MARK
- LENGTH OF INNER EDGE 180m
- RATE OF DIVERGENCE OF SPLAY (EACH SIDE) 12.5%
- FINAL WIDTH 1800m
- OVERALL LENGTH 15000m



14/32 RWY LONGITUDINAL SECTION  
NOT TO SCALE

IMPORTANT - RE-PSM NEEDS TO BE AMENDED ON SITE ACCORDING TO THE POSITION SPECIFIED IN THE TABLE BELOW.

32 TAKE OFF																		
RE - PSM AT START OF TORA										RUNWAY MAGNETIC BEARING		TORA		TODA		ELEVATION AT T.O. ORIGIN		
GEOGRAPHIC						MGA		ELEVATION		(DEG) (MIN) (SEC)	(m) (FT)	(m) (FT)	(m) (FT)	(m) (FT)	(m) (FT)			
LAT			LONG			EASTING	NORTHING	(m)	(FT)									
(DEG)	(MIN)	(SEC)	(DEG)	(MIN)	(SEC)													
-22°	28'	51.25"	150°	10'	59.26"	210147.46	7511216.42	32.2	105.7	322°	34'	21"	1800	5905	1860	6102	23.5	76.9
OBJECTS THAT APPEAR ON THE CHART																		
REF No	GEOGRAPHIC						MGA		ELEVATION TOP		TYPE OF OBSTACLE	DISTANCE FROM SOT		OFFSET		GRADIENT TO TOP		
	(DEG)	(MIN)	(SEC)	(DEG)	(MIN)	(SEC)	EASTING	NORTHING	(m)	(FT)		(m)	(FT)	(m)	(FT)		%	
1	-22°	27'	48.62"	150°	10'	27.45"					209201.42					7513126.67		31.0
2	-22°	27'	47.38"	150°	10'	26.58"	209175.68	7513164.20	36.0	118.2	TREE	2172.2	7126.5	117.7R	386.2R	4.01		
3	-22°	27'	42.22"	150°	10'	23.45"	209083.12	7513321.43	40.0	131.2	TREE	2354.5	7724.7	115.0R	377.2R	3.33		
4	-22°	27'	41.96"	150°	10'	23.12"	209073.50	7513329.07	42.0	137.8	TREE	2365.9	7762.0	110.4R	362.1R	3.66		
5	-22°	27'	41.61"	150°	10'	16.67"	208888.83	7513336.33	42.1	138.3	TREE	2463.4	8082.0	46.5L	152.5L	3.09		
6	-22°	27'	39.25"	150°	10'	12.70"	208773.98	7513406.98	43.2	141.7	TREE	2581.5	8469.4	111.4L	365.4L	2.73		
7	-22°	27'	33.60"	150°	10'	18.10"	208925.15	7513583.82	40.0	131.3	TREE	2660.5	8728.5	107.3R	352.1R	2.07		
8	-22°	27'	33.33"	150°	10'	11.25"	208729.06	7513588.31	42.8	140.6	TREE	2761.2	9059.1	60.8L	199.6L	2.15		
9	-22°	27'	32.25"	150°	10'	05.61"	208567.03	7513618.49	43.0	140.9	TREE	2867.5	9407.6	186.7L	612.5L	1.93		
10	-22°	27'	25.90"	150°	10'	10.43"	208701.37	7513816.61	45.1	147.9	TREE	2973.2	9754.7	27.9R	91.4R	1.94		
11	-22°	27'	21.53"	150°	10'	08.67"	208648.50	7513949.98	45.2	148.4	TREE	3115.2	10220.5	47.8R	156.8R	1.73		
12	-22°	27'	21.85"	150°	10'	02.65"	208476.40	7513937.14	44.4	145.5	TREE	3189.1	10462.8	108.1L	354.5L	1.57		
13	-22°	27'	17.05"	150°	10'	06.29"	208577.63	7514086.81	41.5	136.1	TREE	3269.1	10725.3	53.8R	176.6R	1.28		
14	-22°	27'	09.41"	150°	10'	10.42"	208691.40	7514323.99	45.8	150.4	TREE	3419.0	11217.0	269.8R	885.2R	1.44		

THE TYPE A SURVEY HAS BEEN CONDUCTED IN ACCORDANCE WITH ICAO ANNEX 4 AND DEPARTMENT OF DEFENCE REQUIREMENTS. THE CHART CLEARLY SHOWS THE GRAPHICAL RESULTS OF THE SURVEY AND HAS BEEN CHECKED FOR ACCURACY AND COMPLETENESS OF INFORMATION. THE CHART IS CERTIFIED CORRECT FOR PUBLICATION.

*[Signature]*  
DANIEL GEEVES  
REGISTERED SURVEYOR  
aurecon

15/11/2019  
DATE

REV	DATE	REVISION DETAILS	APPROVED
A	02.07.18	FINAL FOR REVIEW	
B	11.10.19	SIGNED FOR ISSUE	GH
C	15.11.19	SIGNED FOR ISSUE	GH

SCALE	SIZE
AS SHOWN	A1/A3
DRAWN	SURVEYED
AM	DGG / AAM
CHECKED	
DGG	

SIGNED FOR ISSUE	APPROVED
NOT FOR CONSTRUCTION	
<i>[Signature]</i>	
DATE	
15.11.19	
GLENN HALLAHAN	

PROJECT	TITLE	DRAWING No.	PROJECT No.	WBS	TYPE	DISC	NUMBER	REV
OBSTACLE LIMITATION SURVEYS AND ASSESSMENT	WILLIAMSON AIRFIELD AERODROME OBSTACLE CHART ICAO TYPE A (OPERATING LIMITATIONS) ISSUED NOVEMBER 2019 RUNWAY 32 - SHEET 4 OF 4	248842	D21016	DRG	CV	005	C	